

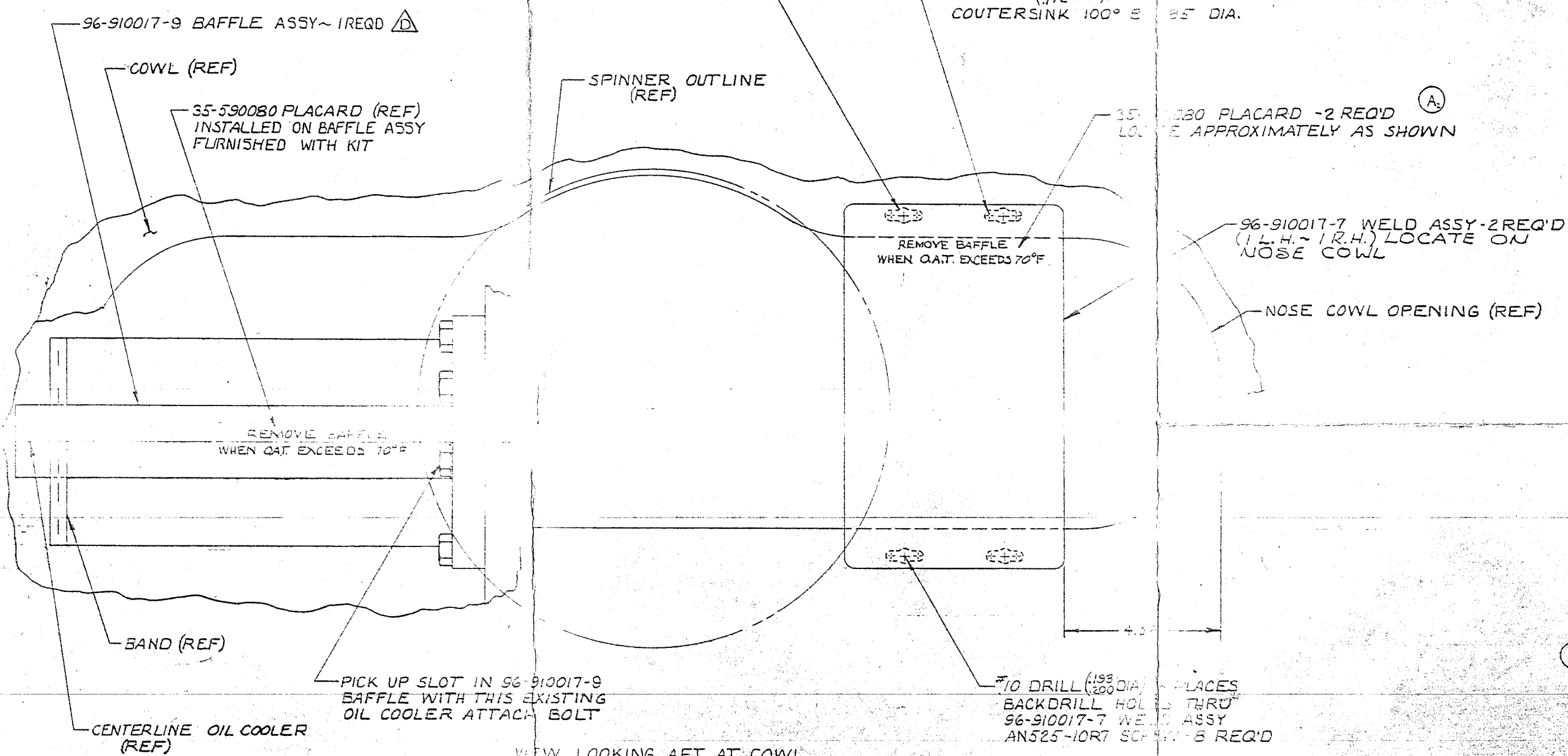


CONGEALING TYPE OIL COOLER ~ HARRISON) P/N 852G732 OR (CONTINENTAL) P/N 626183	NON CONGEALING TYPE OIL COOLER ~ (MODINE) P/N EPR 2036 OR (CONTINENTAL) P/N 630050
 NO DIAGONAL BRACE INSTALLED	 PHYSICALLY IDENTIFIED BY DIAGONAL BRACE

**DETAIL I**  
IDENTIFICATION OF OIL COOLER



VIEW LOOKING AFT AT COWL  
96-910017-7 WELD ASSEMBLY OMITTED ON RIGHT HAND SIDE FOR CLARITY. VIEW IS TYPICAL FOR BOTH ENGINES

### INSTALLATION INSTRUCTIONS

1. BAFFLES MAY BE PAINTED AT CUSTOMERS OPTION. INSTALL 35-590080 PLACARD AFTER PAINTING. IT IS SUGGESTED THAT THE BAFFLES BE FITTED PRIOR TO PAINTING.
2. INSTALL 96-910017-9 BAFFLE BY SLIPPING JOGGLED END UNDER BAND AROUND END OF OIL COOLER AND PICK UP SLOT IN BAFFLE AS SHOWN.  $\Delta$
3. INSTALL 96-910017-7 WELD ASSEMBLY AS SHOWN AND NOTED. CRIMPED EDGE IS THE TOP.
4. INSTALL 96-910018 PLACARD ON FUEL SELECTOR PANEL.

$\Delta$  NOTE: THIS BAFFLE IS REQUIRED ONLY ON AIRCRAFT WITHOUT THE NON CONGEALING OIL COOLER (SEE DETAIL I). THIS BAFFLE IS TO BE DISCARDED BY THE INSTALLING AGENCY WHEN NOT USED.

- C. WEIGHT AND BALANCE INFORMATION (PAGE #24)
- B. KITS TO BE SERVICED.
- $\Delta$  -1 INSTALLATION LIST OF ALL PARTS REQUIRED FOR KIT 55-13-1 (FOR BOTH ENGINES).

TYPE OF CHANGE	REVISIONS			
	SYM	ZONE	DESCRIPTION	DATE
162070 NEW CHANGE ENR 2263	A1		ADDED 96-910017-10 REQ'D CLASS III VARIATION EFF ANY SERIAL DISPENSING REASON: PRODUCTION CHANGE	11-25-66 L.P.T.T.
	A2		IN BILL OF MATERIAL ADDED: 96-910017-8 BAFFLE ASSY, QTY REQ'D 2. REMOVED: 96-910017-11 BAFFLE, QTY REQ'D 2, 96-910017-13 PAD, QTY REQ'D 2. CHANGED: 35-590080 PLACARD, QTY REQ'D 4 (WAS) 6. CHANGED FACE OF DIM TO SHOW 96-910017-3 BAFFLE ASSY REPLACING BAFFLE, PAD & PLACARD DETAIL PARTS. CLASS III VARIATION EFF. KIT SERIAL 173 C AFTER DISP: NETWORK REASON: SALES REQUEST	12/1/63 K. J. ...
NEW CHANGE	B1		ADDED 95-655 TO MODEL BLOCK	11/20/64 S. ...
	B2		ADDED $\Delta$ FOR 96-910017-9 BAFFLE REASON - BAFFLE NOT REQ'D WITH NON CONGEALING OIL COOLER	11/20/64 S. ...
			CLASS III, VAR, DISP: NONE EFF: KIT NO. 55-13-1 (ANY SERIAL)	

QTY	DESCRIPTION	PART NO.	REMARKS
1	100 FLIGHT SUPPLEMENT DEC 55	55-001069	
1	COPY OF DRAWING	55-001068	
32	RIVET	MS20426AD3-4	
16	SCREW	AN525-10RT	
16	NUTPLATE	NAS697-A3	
1	PLACARD	96-910018	
4	PLACARD	35-590080	

REF. KIT NO. 55-13-1

55-001068

QTY REQ'D	SYM	NOMENCLATURE OR DESCRIPTION	CODE IDENT	PART OR IDENTIFYING NO.	SPECIFICATION	MATERIAL OR NOTE	UNIT WT	ZONE	ITEM NO.
2		BAFFLE ASSY		96-910017	-9				
4		WELD ASSY		96-910017	-7				
		NOT USED			-1				
		NOT USED			-5				
		NOT USED			-3				
	$\Delta$	INSTALLATION			-1				

UNLESS OTHERWISE SPECIFIED:  
DIMENSIONS ARE IN INCHES  
TOLERANCES - DECIMALS = ±.01, ANGULAR = ±.010, ANGLE = ±.010, WALL THICKNESS = ±.010, FORGING DRAFT ANGLE = 2°  
CASTINGS - RIVETS, 1/8" WALL THICKNESS, 1/16" FORGING DRAFT ANGLE = 2°  
MACHINE PRACTICE - FINISH CUTS, DIA. BEFORE PLATING

12-28-61  
12-15-61  
12-14-61

**Beech Aircraft Corporation**  
Wichita, Kansas

**KIT INFORMATION -**  
BAFFLE INSTALLATION,  
COLD WEATHER, NOSE COWL

CODE IDENT NO. 70898 D  
SIZE 55-001068

SCALE: NONE 96-910017 SHEET 1 OF 1