

# MICRO SWITCH

A DIVISION OF MINNEAPOLIS-HONEYWELL REGULATOR COMPANY  
PROBOPORT, MINNESOTA

FED. MFR. CODE 91929

# SWITCH-BASIC

CATALOG LISTING

## BZ-3YT

MS 25383-1

(M) BZ-3YT  
ISSUE 10

BZ-3YT

M

DRAWING NUMBER

ISSUE 10  
10/16

REPLACES

RELEASE NO.

CHECK

25 NOV 57

12 MAY 60

3 APR 75

18 JUL 91

10 JUN 94

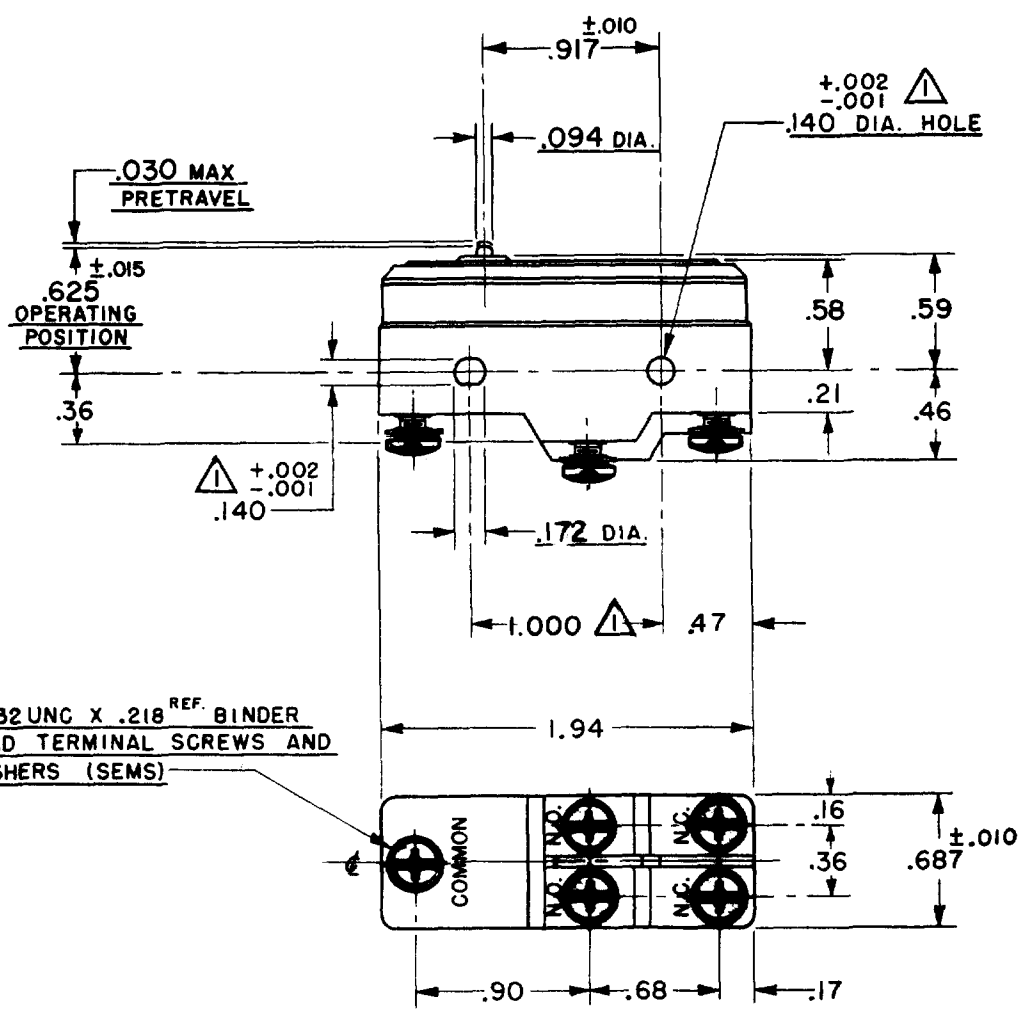
06 JAN 04

29 MAR 53

22 NOV 55

74-86

DRAWN



6-32 UNC X .218 REF. BINDER  
HEAD TERMINAL SCREWS AND  
WASHERS (SEMS)

NOTE -  
MOUNTING HOLES WILL ACCEPT PINS OR SCREWS  
OF .139 MAX. DIA. ON  $1.000 \pm .002$  CENTERS

THIS DRAWING COVERS A PROPRIETARY ITEM AND IS THE PROPERTY OF MICRO SWITCH, A DIVISION OF HONEYWELL. THIS DRAWING IS NOT TO BE COPIED OR USED WITHOUT THE APPROVAL OF MICRO SWITCH.

CHARACTERISTICS	ELECTRICAL DATA	SCALE-----FULL
OPERATING FORCE-----16-26 OZ	CONTACT ARRANGEMENT SINGLE POLE DOUBLE THROW SPLIT CONTACT	DO NOT SCALE PRINT
RELEASE FORCE-----4 OZ. MIN	UNLESS OTHERWISE SPECIFIED DIMENSIONS ARE IN INCHES	TOLERANCES ARE:
DIFFERENTIAL TRAVEL-----.001-.004	UNDERWRITERS' LAB. INC. LISTED RATING -L4- 5A 280 VAC	ONE PLACE (.0) $\pm .030$
OVERTRAVEL-----.005 MIN		TWO PLACE (.00) $\pm .015$
		THREE PLACE (.000) $\pm .005$
		ANGLES $\pm$
		WEIGHT---.074 LB