

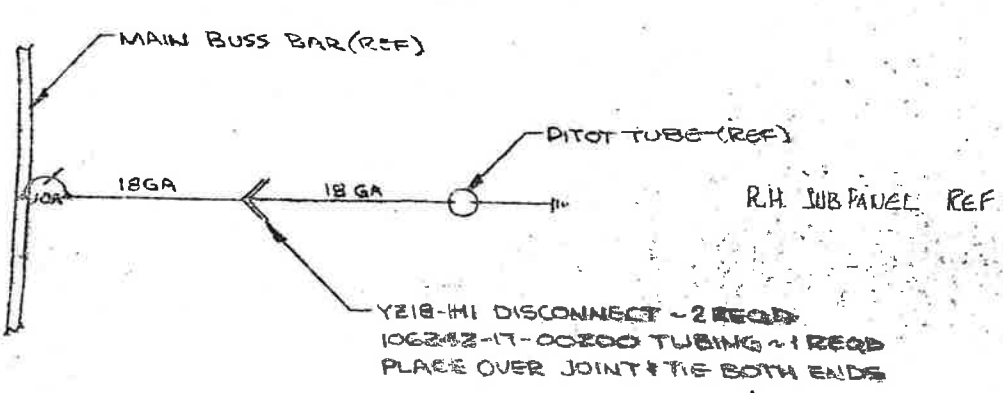
SECTION B-B  
FULL SIZE



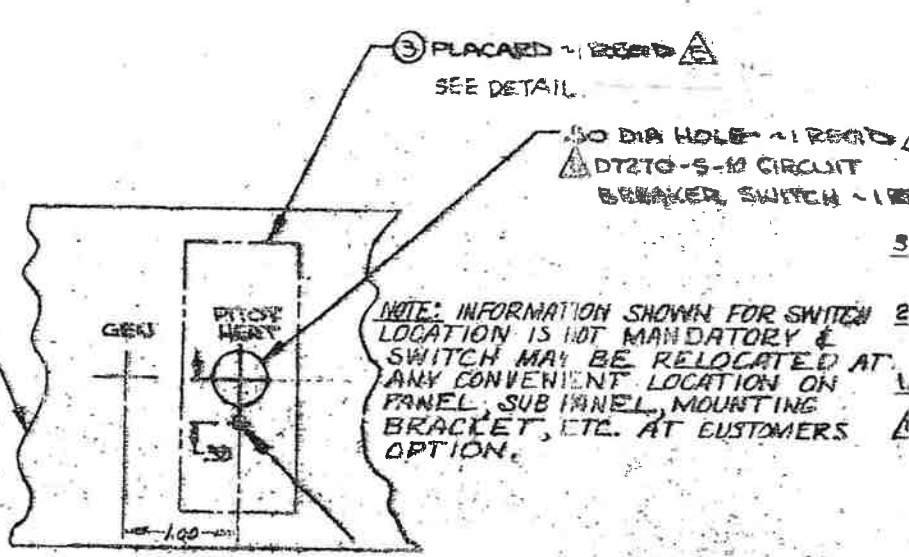
DETAIL - 3  
LOCATION & SIZE OF  
LETTERING, PAINT  
AND CONTEXT SAME  
AS 33-324019 EXCEPT  
AS SHOWN

### REWORK INSTRUCTIONS

1. LOCATE & CUT OPENING IN LOWER L... SKIN. INSTALL 35-361151 DOUBLER... (MODEL 33 ONLY).
2. INSTALL 35-361108-B MAST ON 50... TUBE. INSTALL PITOT TUBE & MAST. A... DRILL .50 DIA HOLE IN MAIN SPARE W... SHOULD BE EQUIDISTANT FROM SP... AN520-2-9 GROUND ST. ROUTE WIRE... THRU WHEEL WELL FOLLOWING EXIST... WHEN POSSIBLE. INSTALL SWITCH PER... DIAGRAM AS SHOWN.
- 3.



WIRING DIAGRAM  
ELECTRICAL LOAD REQUIREMENTS - 7 AMPS.



- THIS PART IS TO BE FURNISHED AS A SHEARED FLAT SHEET WITH DIMENSIONS 4"x5" WITHOUT HOLES AND RADII.
- MODELS 35-A-33, B33, C33, C33A, E33.
- MODELS 35, A35, B35, C35, D35, E35, F35, G35, H35, J35, K35, M35, N35, P35, Q35, R35, S35, T35, U35, V35, W35, X35, Y35, Z35.

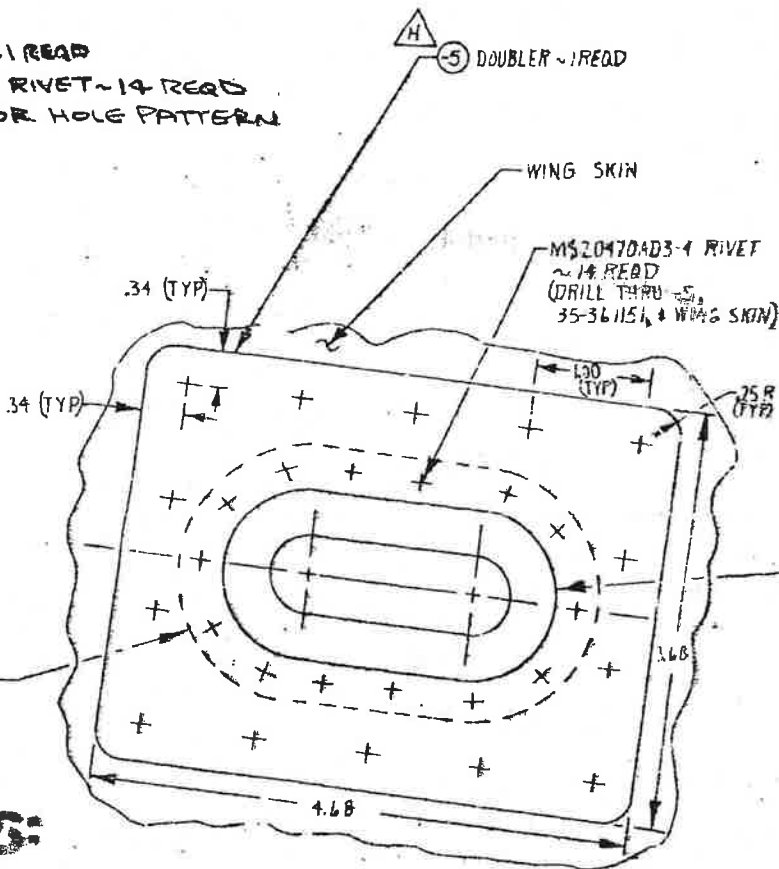
35-361151 DOUBLER ASSY ~ 1 REQD  
 ATTACH WITH AN470AD3-4 RIVET ~ 14 REQD  
 (USE HOLES IN DOUBLER FOR HOLE PATTERN  
 IN SKIN)

CUTOUT IN SKIN  
 (AL 2 PLACES)

FOR PITOT TUBE  
 FROM THIS)

REQD

35-361151 DOUBLER ASSY



TYPE OF CHANGE	REVISIONS			
	ZONE	SYM	DESCRIPTION	DATE
NEW CHANGE		5	ADDED VIEW "C-C" REASON: ON SOME AIRCRAFT THE EXISTING HOLE LEFT BY THE OLD PITOT TUBE IS NOT COMPLETELY REMOVED BY THE NEW CUT OUT THIS LEAVING AN UNDESIRABLE APPEARANCE. CLASS II B, EFF: KIT 33-2 (713 1 AFT) DISPI: REWORK	4/14/80 12-24-78 5-4-76

### INSTRUCTIONS:

INSTALL IN LOWER, LEFT WING  
 35-361151 DOUBLER ASSY. (ON  
 3-5 MAST ON 50-384040-1 PITOT  
 TUBE AS SHOWN.  
 IN MAIN SPAR WEB (LOCATION  
 STRAIGHT FROM SPAR CAPS). INSTALL  
 ST. ROUTE WIRE THRU GROMMET  
 FOLLOWING EXISTING WIRING  
 STALL SWITCH PER WIRING

VIEW C-C  
 (FULL SIZE)

NOTE: THIS VIEW IS TO BE USED BY THE MODIFICATION  
 AGENCY TO MAKE A PART FROM -5  
 DOUBLER AS SHOWN WHEN THE NEW CUTOUT  
 IN THE WING SKIN DOES NOT REMOVE THE  
 EXISTING HOLE FROM THE OLD PITOT TUBE.

QTY	PART NO.	DESCRIPTION	UNIT	REMARKS
4	MS20470AD3-4	RIVET		
1	-5	DOUBLER		REF. KIT 33-2
1	33-001022	KIT INFORMATION		
1	AN511-2-9	GROMMET		
15'	18 GA	WIRE		PER MIL-W-5006
2	31085	TERMINAL		
1	MS20465-63	NUT		
1	AN360-6	WASHER		
1	AN647-632-5	SCREW		
4	AN515-8-8	SCREW		

### REF KIT NO. 33-2

33-001022

A HOLE ~ 1 REQD  
 TO -5-10 CIRCUIT  
 MAKER SWITCH ~ 1 REQD

SHOWN FOR SWITCH  
 MANDATORY &  
 RELOCATED AT  
 LOCATION ON  
 MOUNTING  
 AT CUSTOMERS

5. THIS INSTALLATION CONFORMS WITH  
 ITEM 602 (b) OF AIRCRAFT SPECIFICATION  
 3A15

2. W.T. & BALANCE INFO  
 + 1 LB (+7%)

1. 2 KITS TO BE SERIALIZED

IN THE EVENT THAT THE PANEL  
 ALREADY HAS PROVISIONS FOR  
 PITOT HEAT CIRCUIT BREAKER  
 SWITCH (PLACARD, HOLES, ETC),  
 THIS ITEM NOT NECESSARY

PART NO. OF BURNIDY ENG. CO. INC.,  
 NORWALK, CONNECTICUT

PART NO. OF AIRCRAFT MARINE  
 PRODUCTS, HARRISBURG, PENN.

PART NO. OF SPENCER THERMO-  
 SPRT CO., ATTLEBORO, MAES

QTY	PART NO.	DESCRIPTION	UNIT	REMARKS
4	AN647-632-5	SCREW		
14	AN470AD3-4	RIVET		
1	106412-17	TUBING		
1	50-384040-1	PITOT TUBE		
2	YE18-M1	DISCONNECT		
1	07210-510	CURRENT SENS. SWITCH		
1	35-361151	DOUBLER ASSY		
1	35-361151	WIRE ASSY		
1	35-361151	TERMINAL		
1		3 PLACARD		

LIST OF MATERIALS

UNLESS OTHERWISE SPECIFIED  
 DIMENSIONS ARE IN INCHES  
 TOLERANCES - DECIMALS: X = ±.005, XX = ±.010, XXX = ±.015, XXXX = ±.020, ANGULAR ±.5°  
 CASTINGS - FLESH, 1/8" WALL THICKNESS, 13°  
 FINISHES - BEAT ANGLE 7°  
 MACHINING FINISHES - FINISH CUTS, 0.002, DIA. HOLE ±.0005

APPROVAL: [Signatures]

SCALE: 1/2" = 1" LAYOUT

KIT INFORMATION - HEATED PITOT INSTALLATION

Beach Aircraft CORPORATION  
 WICHITA, KANSAS

33-001022

72-19-199