

MANDATORY**MEL-74-03****TITLE**

IGNITION - TRANSMITTAL OF CONTINENTAL MOTORS SB19-02A, LYCOMING SB 637, AND CHAMPION AEROSPACE SLICK SERVICE BULLETIN SB1-19

EFFECTIVITY

Group A: Airplanes that were delivered with possible suspect magnetos.

Beechcraft Model**MODEL**

G58

SERIAL NUMBERS

TH-2460, TH-2462 thru TH-2514

Group B: Airplanes that installed a magneto as spares after delivery.

Cessna Models**MODEL**

T303

310

310A

310B

310C

310D

310E

310F

310G

310H/E310H

310I

310J/310J-1/E310J

310K

310L

310N

310P/T310P

310Q/T310Q

310R/T310R

320/320-1

320A

320B

320C

SERIAL NUMBERS

695, T30300001 thru T30300315

35000 thru 35546

38000 thru 38161, 38029A, 38030A, 38081A

35547 thru 35771

35772 thru 35999, 39001 thru 39031

39032 thru 39309

35912A, 310M0001 thru 310M0036

310-0001 thru 310-0156

310G0001 thru 310G0156

310H0001 thru 310H0148

310I0001 thru 310I0200

310J0001 thru 310J0200

310K0001 thru 310K0245

310L0001 thru 310L0207

310N0001 thru 310N0198

310P0001 thru 310P0240

310Q0001 thru 310Q1160

310R0001 thru 310R2140

320-0001 thru 320-0110

320A0001 thru 320A0047

320B0001 thru 320B0062

320C0001 thru 320C0073

November 19, 2019

MEL-74-03
Page 1 of 6

Textron Aviation Customer Service, P.O. Box 7706, Wichita, KS 67277, U.S.A. 1-316-517-5800

This document contains technical data and is subject to U.S. export regulations. This information has been exported from the United States in accordance with export administration regulations. Diversion contrary to U.S. law is prohibited. ECCN: 9E991

MANDATORY**MEL-74-03**

320D	320D0001 thru 320D0130
320E	320E0001 thru 320E0110
320F	320F0001 thru 320F0045
335	335-0001 thru 335-0065
336	336-0001 thru 336-0195
337	337-0001 thru 337-0239
337A	337-0240 thru 337-0525
337B/T337B	337-00526 thru 337-00755
M337B	337-M0001 thru 337-M0476
337C/T337C	337-0756 thru 337-0978
337D/T337D	337-0979 thru 337-1193
337E/T337E	33701194 thru 33701316
F337E/FT337E	F33700001 thru F33700024
337F/T337F	33700306, 33700569, 33701317 thru 33701462
F337F/FT337F	F33700025 thru F33700055
337G	33701449, 33701463 thru 33701815
F337G	F33700056 thru F33700084
337H/T337H	33701816 thru 33701922, 33701928 thru 33701950
T337H-SP	33701923 thru 33701927, 33701951 thru 33701955
F337H	F33700085 thru F33700086
FTB337/FTB337G/FTB337H	FP3370001 thru FP3370023
T337G	P3370001 thru P3370195, P3370197 thru P3370292
T337H	P3370196, P3370293 thru P3370356
340	340-0001 thru 340-0115, 340-0151 thru 340-0260, 340-0301 thru 340-0370, 340-0501 thru 340-0555
340A	340A0001 thru 340A0125, 340A0201 thru 340A0375, 340A0401 thru 340A0562, 340A0601 thru 340A0801, 340A0901 thru 340A1045, 340A1201 thru 340A1280, 340A1501 thru 340A1543, 340A1801 thru 340A1817
401/402	401-0001 thru 401-0322, 402-0001 thru 402-0322
401A	401A0001 thru 401A0132
401B	401B0001 thru 401B0221
402A	402A0001 thru 402A0129
402B	402B0001 thru 402B0122, 402B0201 thru 402B0249, 402B0301 thru 402B0455, 402B0501 thru 402B0640, 402B0801 thru 402B0935,

MANDATORY**MEL-74-03**

	402B1001 thru 402B1100, 402B1201 thru 402B1250, 402B1301 thru 402B1384
402C	689, 402C0001 thru 402C0125, 402C0201 thru 402C0355, 402C0401 thru 402C0528, 402C0601 thru 402C0653, 402C0801 thru 402C1020
414	414-0001 thru 414-0099, 414-0151 thru 414-0175, 414-0251 thru 414-0280, 414-0351 thru 414-0437, 414-0451 thru 414-0550, 414-0601 thru 414-0655, 414-0801 thru 414-0855, 414-0901 thru 414-0965
414A	414A0001 thru 414A0121, 414A0201 thru 414A0340, 414A0401 thru 414A0535, 414A0601 thru 414A0680, 414A0801 thru 414A0858, 414A1001 thru 414A1212

Beechcraft Models

MODEL	SERIAL NUMBERS
50	H-1 thru H-11, LH-1 thru LH-55
D55/D55A	TE-452 thru TE-767
E55/E55A	TE-768 and On
56TC	TG-2 thru TG-83
A56TC	TG-84 thru TG-94
58/58A	TH-1 thru TH-2124
58P/58PA	TJ-3 and On
58TC/58TCA	TK-1 and On
G58	TH-2125 thru TH-2459
60	P-4 thru P-122, P-124 thru P-126
65	L-1, L-2, L-6, LF-7 and On, LC-1 thru LC-239
65-80	LD-1 thru LD-33, LD-35 thru LD-45, LD-47 thru LD-150
65-A80/65-A80-8800	LD-34, LD-46, LD-151 thru LD-269
65-B80	LD-270 thru LD-511
65-88	LP-1 thru LP-26, LP-28, LP-29
A65	LC-240 thru LC-335
A65-8200	LC-273 thru LC-324
70	LB-1 thru LB-35
76	ME-2 and On
95	TD-1 thru TD-302
95-55	TC-1 thru TC-190
95-A55	TC-191 thru TC-349, TC-351 thru TC-370, TC-372 thru TC-501
95-B55/95-B55A	TC-371, TC-502 thru TC-1392, TC-1397 thru TC-1401, TC-1402 and On

MANDATORY**MEL-74-03**

95-B55B	TF-1 and On
95-C55/95-C55A	TC-350, TE-1 thru TE-49, TE-51 thru TE-451
B95	TD-303 thru TD-452
B95A	TD-453 thru TD-533
D95A	TD-534 thru TD-707
E95	TD-708 thru TD-721

REASON

There have been limited reports in which impulse coupling stop pins have moved relative to the factory placement within the magneto frame of Slick magnetos. There has been one report of a liberated stop pin. A liberated stop pin could potentially enter the gear train of the engine, resulting in damage to the gear train, damage to engine accessories and could ultimately cause catastrophic engine failure.

DESCRIPTION

This service document transmits Continental Motors SB19-02A, Lycoming SB 637, and Champion Aerospace SLICK Service Bulletin SB1-19A which has instructions for doing an inspection of the stop pin on suspect magneto.

COMPLIANCE

MANDATORY. Inspect affected magneto models for movement of impulse coupling stop pin at the next convenient maintenance interval, not to exceed the next 100 hours or 400 hours Time in Service (TIS), and every 500 hours thereafter. Alternatively, replace the affected magneto with an approved model magneto, outside the above serial number range, or compliant with the SB1-19 dimensions herein for the stop pin. Document service bulletin compliance as written entry in the applicable Aircraft and/or Engine logbook.

NOTE: If desired to align future magneto inspection intervals, do the 500-hour magneto inspection in accordance with the Slick 4300/6300 Series Magneto Maintenance and Overhaul Manual. The subsequent stop pin inspections would then be performed during the recurring 500 hour magneto inspection.

A service document published by Textron Aviation may be recorded as *completed* in an aircraft log only when the following requirements are satisfied:

- 1) The mechanic must complete all of the instructions in the service document, including the intent therein.
- 2) The mechanic must correctly use and install all applicable parts supplied with the service document kit. Only with written authorization from Textron Aviation can substitute parts or rebuilt parts be used to replace new parts.
- 3) The mechanic or airplane owner must use the technical data in the service document only as approved and published.
- 4) The mechanic or airplane owner must apply the information in the service document only to aircraft serial numbers identified in the *Effectivity* section of the document.
- 5) The mechanic or airplane owner must use maintenance practices that are identified as acceptable standard practices in the aviation industry and governmental regulations.

No individual or corporate organization other than Textron Aviation is authorized to make or apply any changes to a Textron Aviation-issued service document or flight manual supplement without prior written consent from Textron Aviation.

Textron Aviation is not responsible for the quality of maintenance performed to comply with this document, unless the maintenance is accomplished at a Textron Aviation-owned Service Center.

CONSUMABLE MATERIAL

No specialized consumable materials are required to complete this service document.

MANDATORY**MEL-74-03****TOOLING**

NAME	NUMBER	MANUFACTURER	USE
T-118 Mag Timing Pin		Commercially Available	For magneto timing.
Mag Timing Pin		Commercially Available	For magneto timing.

REFERENCES

Applicable Model Maintenance/Service Manual

Continental Aerospace Technologies Service Bulletin SB19-02A or latest revision.

Lycoming Service Bulletin No. 637 or latest revision.

Slick Champion Aerospace Service Bulletin SB1-19 or latest revision

NOTE: To make sure all publications used are complete and current. Refer to www.txtavsupport.com.

PUBLICATIONS AFFECTED

None

ACCOMPLISHMENT INSTRUCTIONS

1. Look at the airplane or engine maintenance log to determine if a suspect Slick Impulse coupled magneto identified in the Slick Champion Aerospace Service Bulletin SB1-19 or latest revision.
 - A. If a suspect Impulse coupled magneto is installed, go to Step 2.
 - B. If a suspect Impulse coupled magneto is not installed, sign off this service document as complete, go to Step 8.
2. Review the engine log book for documentation of prior compliance with the service bulletins listed:
 - Continental Aerospace Technologies Service Bulletin SB19-02A (Revision A or latest revision)
 - Lycoming Service Bulletin No. 637 (or latest revision)
 - Slick Champion Aerospace Service Bulletin SB1-19 (or latest revision)

NOTE: Revision A of the Continental Motors SB15-4, Lycoming SB 622A , and Slick/Champion Aerospace Service Bulletin SB1-15 have extended the serial range for the Magnetos with Revision A. Because of the extended serial range, Revision A or later revision must be reviewed and complied.

 - A. If Continental Motors SB15-4A, or Lycoming SB 622A, and Slick/Champion Aerospace Service Bulletin SB1-15A (or latest revision) has not been complied with, go to Step 3.
 - B. If Continental Motors SB15-4A, or Lycoming SB 622A, and Slick/Champion Aerospace Service Bulletin SB1-15A (or latest revision) has been complied with, go to Step 8.
3. Prepare the airplane for maintenance.
 - A. Make sure that the airplane is electrically grounded.
 - B. Make sure that all switches are in the OFF/NORM position.
 - C. Disconnect electrical power from the airplane.
 - (1) Disconnect external electrical power.
 - (2) Disconnect the airplane battery.
 - D. Attach maintenance warning tags to the battery and external power receptacle that have **"DO NOT CONNECT ELECTRICAL POWER - MAINTENANCE IN PROGRESS"** written on them.
4. Remove the engine cowling. (Refer to the applicable Model Maintenance/Service Manual.)
5. Refer to the referenced service documents to complete the magneto inspection.

MANDATORY

- Continental Aerospace Technologies Service Bulletin SB19-02A (Revision A or latest revision).
- Lycoming Service Bulletin No. 637 (or latest revision).
- Slick Champion Aerospace Service Bulletin SB1-19 (or latest revision).

NOTE: If desired to align future magneto inspection intervals, do the 500-hour magneto inspection in accordance with the Slick 4300/6300 Series Magneto Maintenance and Overhaul Manual. The subsequent stop pin inspections would then be performed during the recurring 500 hour magneto inspection.

6. Install the engine cowling. (Refer to the applicable Model Maintenance/Service Manual.)
7. Remove the maintenance warning tags and connect the airplane battery.
8. Make an entry in the airplane logbook that states compliance and method of compliance with this service document.

MATERIAL INFORMATION

For parts information, refer to the applicable service document that follows:

Continental Aerospace Technologies Service Bulletin SB19-02A (Revision A or latest revision)

Lycoming Service Bulletin No. 637 (or latest revision)

Slick Champion Aerospace Service Bulletin SB1-19 (or latest revision)

TITLE

IGNITION - TRANSMITTAL OF CONTINENTAL MOTORS SB19-02A, LYCOMING SB 637, AND CHAMPION AEROSPACE SLICK SERVICE BULLETIN SB1-19

TO:

To aircraft owner of the models that follow:

Cessna Models: T303, 310, 310A, 310B, 310C, 310D, 310E, 310F, 310G, 310H/E310H, 310I, 310J/310J-1/E310J, 310K, 310L, 310N, 310P/T310P, 310Q/T310Q, 310R/T310R, 320/320-1, 320A, 320B, 320C, 320D, 320E, 320F, 335, 336, 337, 337A, 337B/T337B, M337B, 337C/T337C, 337D/T337D, 337E/T337E, F337E/FT337E, 337F/T337F, F337F/FT337F, 337G, F337G, 337H/T337H, T337H-SP, F337H, FTB337/FTB337G/FTB337H, T337G, T337H, 340, 340A, 401/402, 401A, 401B, 402A, 402B, 402C, 414, 414A.

Beechcraft Models: 50, D55/D55A, E55/E55A, 56TC, A56TC, 58/58A, 58P/58PA, 58TC/58TCA, G58, 60, 65, 65-80, 65-A80/65-A80-8800, 65-B80, 65-88, A65, A65-8200, 70, 76, 95, 95-55, 95-A55, 95-B55/95-B55A, 95-B55B, 95-C55/95-C55A, B95, B95A, D95A, E95.

REASON

There have been limited reports in which impulse coupling stop pins have moved relative to the factory placement within the magneto frame of Slick magnetos. There has been one report of a liberated stop pin. A liberated stop pin could potentially enter the gear train of the engine, resulting in damage to the gear train, damage to engine accessories and could ultimately cause catastrophic engine failure.

COMPLIANCE

MANDATORY. Inspect affected magneto models for movement of impulse coupling stop pin at the next convenient maintenance interval, not to exceed the next 100 hours or 400 hours Time in Service (TIS), and every 500 hours thereafter. Alternatively, replace the affected magneto with an approved model magneto, outside the above serial number range, or compliant with the SB1-19 dimensions herein for the stop pin. Document service bulletin compliance as written entry in the applicable Aircraft and/or Engine logbook.

NOTE: If desired to align future magneto inspection intervals, do the 500-hour magneto inspection in accordance with the Slick 4300/6300 Series Magneto Maintenance and Overhaul Manual. The subsequent stop pin inspections would then be performed during the recurring 500 hour magneto inspection.

LABOR HOURS

For planning purposes only:

WORK PHASE	LABOR-HOURS
Magneto Stop Pin Inspection	2.0 per magneto for the Initial Inspection

NOTE: The subsequent stop pin inspections will align with the recurring 500 hour magneto inspection.

MATERIAL AVAILABILITY

For parts information, refer to the applicable service documents that follow:

Continental Aerospace Technologies Service Bulletin SB19-02A (Revision A or latest revision)

Lycoming Service Bulletin No. 637 (or latest revision)

November 19, 2019

MEL-74-03
Page 1 of 2

Textron Aviation Customer Service, P.O. Box 7706, Wichita, KS 67277, U.S.A. 1-316-517-5800

This document contains technical data and is subject to U.S. export regulations. This information has been exported from the United States in accordance with export administration regulations. Diversion contrary to U.S. law is prohibited. ECCN: 9E991

Slick Champion Aerospace Service Bulletin SB1-19 (or latest revision)

WARRANTY

This service document is *mandatory*. Eligible airplanes may qualify for parts and labor coverage to the extent noted in the *Labor Hours* and *Material Availability* sections of this document.

Eligibility: Airplanes identified within the serial number effectivity of this service document must have active Engine warranty coverage on the original issue date of this document and the coverage must be active on the day the work is accomplished.

Parts Coverage: Textron Aviation-owned and Textron Aviation-authorized Service Facilities, operators, or other maintenance facilities may submit a claim for the parts required to accomplish this service document as defined in the *Material Availability* section of this document.

Labor Coverage: Textron Aviation-owned and Textron Aviation-authorized Service Facilities rated to perform maintenance on the specific model of Beechcraft, or Cessna Aircraft may submit a claim for the labor necessary to accomplish this service document as defined in the *Labor Hours* section of this document.

Credit Application: After this service document has been accomplished, a claim must be submitted to Textron Aviation within 30 days of the service document completion. Claims for compliance of this service document are to be filed as a W4 type claim.

Please submit your claim form online at ww2.txtav.com/Parts or email the completed Textron Aviation Claim Form to warranty@txtav.com. If submitted on-line a Return Authorization will be provided. If a paper claim is submitted your claim will be entered into the system and a Return Authorization will be sent to you.

The Return Authorization must accompany any required return parts (see *Material Availability*), to the point of purchase.

Parts to be returned to Textron Aviation Parts Distribution should be forwarded to:

Textron Aviation Parts Distribution
Warranty Administration
285 South Greenwich Road
Bldg B89, Docks 1-4
Wichita, KS 67206
USA

Expiration: November 19, 2020 (after this date the owner/operator assumes the responsibility for compliance costs)

Textron Aviation reserves the right to void continued airplane warranty coverage for the parts affected by this service document until the service document is accomplished.

NOTE: As a convenience, service documents are now available online to all our customers through a simple, free-of-charge registration process. If you would like to sign up, please visit the Customer Access link at www.txtavsupport.com to register.

SERVICE BULLETIN

Compliance Will Enhance Safety

SB19-02

TECHNICAL PORTIONS
FAA APPROVED

- SUBJECT:** Champion Aerospace Slick Service Bulletin SB1-19
- PURPOSE:** Mandatory inspection of impulse coupled Slick magnetos.
- COMPLIANCE:** Reference detailed compliance requirements as directed by the attached Champion Aerospace Slick Service Bulletin SB1-19.

MODELS

AFFECTED: New and rebuilt O-200-A, B, D, X; IO-240-A, B; IO-360-KB; LTSIO-360-KB, RB; TSIO-360-CB, FB, GB, KB, LB, MB, RB, SB; O-470-R, S, U; IO-470-C, F, J, K, L, N, S, V, VO; IO-520-A, BA, BB, C, CB, D, F, J, L, M; LTSIO-520-AE; TSIO-520-AE, AF, BE, C, CE, DB,G, H, M, P, R, T, UB; IO-550-B, C, D, F, L; and TSIO-550-C, E

I. GENERAL INFORMATION

Continental Motors (CMI) recommends customer compliance, as specified in Champion Aerospace Slick Service Bulletin SB1-19.

II. WARRANTY

Direct all questions regarding the actions required by the attached Service Bulletin to:
 Champion Aerospace LLC
 1230 Old Norris Road
 Liberty, SC/USA 29657

ISSUED	REVISED	 P.O. Box 90 Mobile, AL 251-436-8299	PAGE NO	DOC NO	REVISION
2019-03-07			1 of 2	SB19-02	

Intentionally Left Blank

ISSUED	REVISED		PAGE NO	DOC NO	REVISION
2019-03-07		P.O. Box 90 Mobile, AL 251-436-8299	2 of 2	SB19-02	

Service Bulletin

TO: Aircraft Manufacturers, Aircraft Engine Manufacturers, Distributors, Dealers, Engine Maintainers, Engine Overhaul Facilities, Owners and Operators of Slick Aircraft Magnetos.

SUBJECT: Mandatory inspection of impulse coupled Slick magnetos

MAGNETO MODELS

AFFECTED: The following magneto models with serial numbers between 16010001 and 18050664:

4301, 4303, 4316, 4330, 4333, 4346, 4354, 4371, 4372, 4373, 4374, 4381, 4392, 6310, 6314, 6320, 6324, 6331, 6351, 6352, 6355, 6361, 6362, 6364, 6367, 6377, 6379, 6380, 6382, 6399

NOTE: 16010001 = SN manufacture date of January 2016 and
18050664 = SN manufacture date of May 2018

ENGINE MODELS

AFFECTED: 4300 series and 6300 series magnetos.

AIRFRAME MODELS

AFFECTED: 4300 series and 6300 series magnetos.

BACKGROUND INFORMATION:

There have been limited reports in which impulse coupling stop pins have moved relative to the factory placement within the magneto frame of Slick magnetos. There has been one report of a liberated stop pin. A liberated stop pin could potentially enter the gear train of the engine, resulting in damage to the gear train, damage to engine accessories and could ultimately cause catastrophic engine failure.

COMPLIANCE:

Inspect affected magneto models for movement of impulse coupling stop pin at the next convenient maintenance interval, not to exceed the next 100 hours or 400 hours Time in Service (TIS), and every 500 hours thereafter. Alternatively, replace the affected magneto with an approved model magneto, outside the above serial number range, or compliant with the SB1-19 dimensions herein for the stop pin. Document service bulletin compliance as written entry in the applicable Aircraft and/or Engine logbook.

PROOF OF COMPLIANCE:

Appropriate logbook entries. See SB1-19 COMPLIANCE and WARRANTY INFORMATION.

MAINTENANCE PARTS AFFECTED:

None.

Proprietary Statement

The information contained in this document is proprietary property of Champion Aerospace LLC. Receipt or possession of this information does not confer, license or imply any rights to use, sell or manufacture from this information. No reproduction of publication, in whole or in part, shall be made without the express written consent of Champion Aerospace LLC. All information is covered under full protection of the United States copyright laws.

Copyright ©2019, Champion Aerospace LLC. All rights reserved.

SUBJECT TO THE EAR, ECCN 9E991. THIS INFORMATION IS SUBJECT TO THE EXPORT CONTROL LAWS OF THE UNITED STATES, SPECIFICALLY INCLUDING THE EXPORT ADMINISTRATION REGULATIONS (EAR), 15 C.F.R. PART 730-744. TRANSFER, RETRANSFER, OR DISCLOSURE OF THIS DATA BY ANY MEANS TO A NON-U.S. PERSON (INDIVIDUAL OR COMPANY), WHETHER IN THE UNITED STATES OR ABROAD, WITHOUT ANY REQUIRED EXPORT LICENSE OR OTHER APPROVAL FROM THE U.S. GOVERNMENT IS PROHIBITED, INCLUDING WITHOUT LIMITATION ANY DIVERSION TO A MILITARY END USER OR USE IN A MILITARY APPLICATION.

ISSUED			REVISED			Champion Aerospace LLC 1230 Old Norris Road Liberty, SC/USA 29657 ©2019 Champion Aerospace LLC	PAGE NO.	REVISION
MO	DAY	YR	MO	DAY	YR			
02	06	19					1 of 8	

Service Bulletin

**PARTS REQUIRED
PER BULLETIN:**

Replacement magnetos as required.

TOOLS REQUIRED:

T-118 mag timing pin, mag timing light, calibrated measuring device, and standard shop tools.

WEIGHT CHANGE:

None.

**REQUIRED SERVICE
LITERATURE:**

Refer to the latest revision of Champion Slick F-1100 Master Service Manual, as applicable, when performing the detailed instructions contained in this Service Bulletin.

**WARRANTY
INFORMATION:**

NOTE: Labor is not included per Champion warranty policy.

If the magneto is within the listed s/n range and fails the inspection within these DETAILED INSTRUCTIONS, the magneto should be returned for warranty consideration through the original point of sale. Champion Aerospace will not accept direct returns. Affected magnetos that fail the required inspections must be returned with proof of purchase to the original point of sale (either Authorized Champion Distributor or Aircraft Engine Manufacturer) for warranty consideration. Champion waives the published warranty limits for TIS and calendar period for parts affected by this Service Bulletin. Warranty Credits will only be processed to an Authorized Champion Distributor or Aircraft Engine Manufacturer after final receipt of magneto and confirmation of required measurement. Champion reserves the right to deny warranty and return magneto if measurements are subsequently found to be compliant with the Service Bulletin.

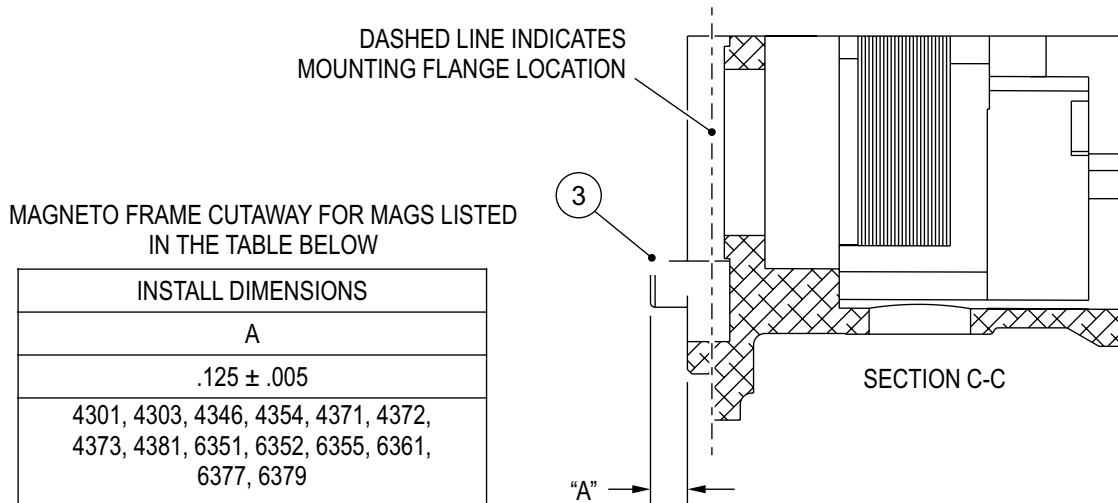
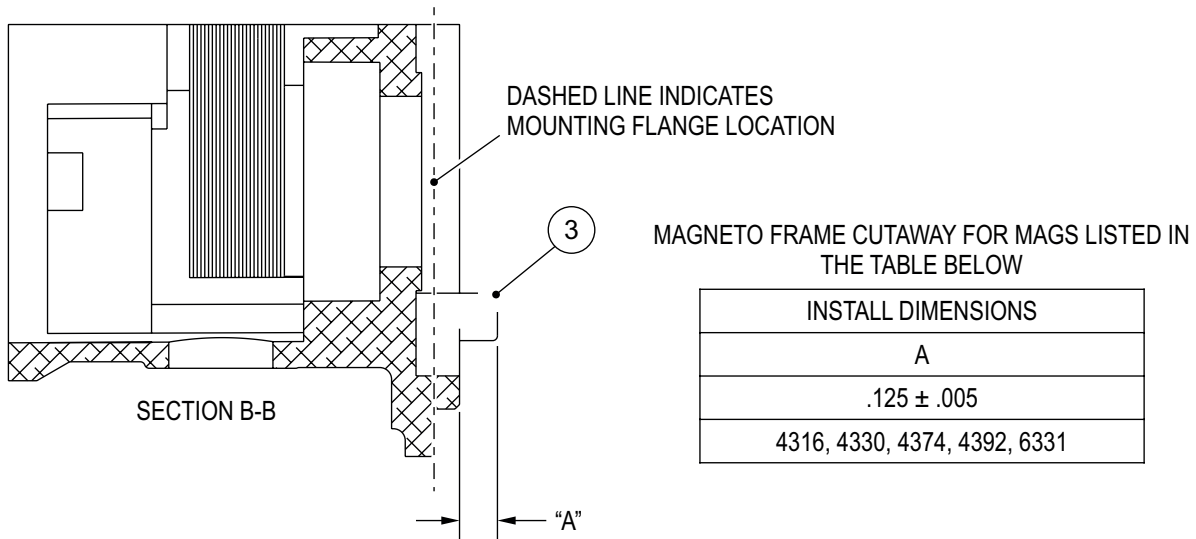
**DETAILED
INSTRUCTIONS:**

- Warranty form must include name, shipping address, model number, serial number of the magneto(s) being returned and TIS information in the box with the magneto(s). (Distributors have warranty forms)
- Do not leave drive gears installed on the magneto(s). Champion cannot guarantee return of these components
 - A. Locate magneto serial number on magneto dataplate. If magneto serial number is determined to be within the range specified in this bulletin, remove the magneto from engine in accordance with the latest revision of the engine manufacturer's manual(s).
 - B. Inspect the magneto to confirm the necessary recess/projection (based on individual magneto type) of the stop pin. If the stop pin installation depth is not in compliance with the dimension shown in Figures 1 through 6, the magneto must be replaced with a new or serviceable unit that is in compliance with this service bulletin.
 - C. Repeat this inspection every 500 hours TIS, until end of product life.

THIS DOCUMENT SUBJECT TO THE CONTROLS AND RESTRICTIONS ON THE FIRST PAGE

ISSUED			REVISED			Champion Aerospace LLC 1230 Old Norris Road Liberty, SC/USA 29657 ©2019 Champion Aerospace LLC	PAGE NO.	REVISION
MO	DAY	YR	MO	DAY	YR			
02	06	19				2 of 8		

Service Bulletin



USE A CALIBRATED MEASURING DEVICE TO MEASURE DISTANCE "A", AS SHOWN IN CUTAWAY SECTIONS B-B AND C-C. MAKE SURE THE FRAME SURFACE IS FREE OF CONTAMINANTS. ANY MEASUREMENT GREATER THAN 0.130 INCH OF ANY PART OF THE STOP PIN (3), THE MAGNETO SHOULD BE REMOVED FROM SERVICE AND RETURNED TO CHAMPION FOR WARRANTY.

FIGURE 1. MAGNETO FRAME CUTAWAY SECTIONS B-B AND C-C

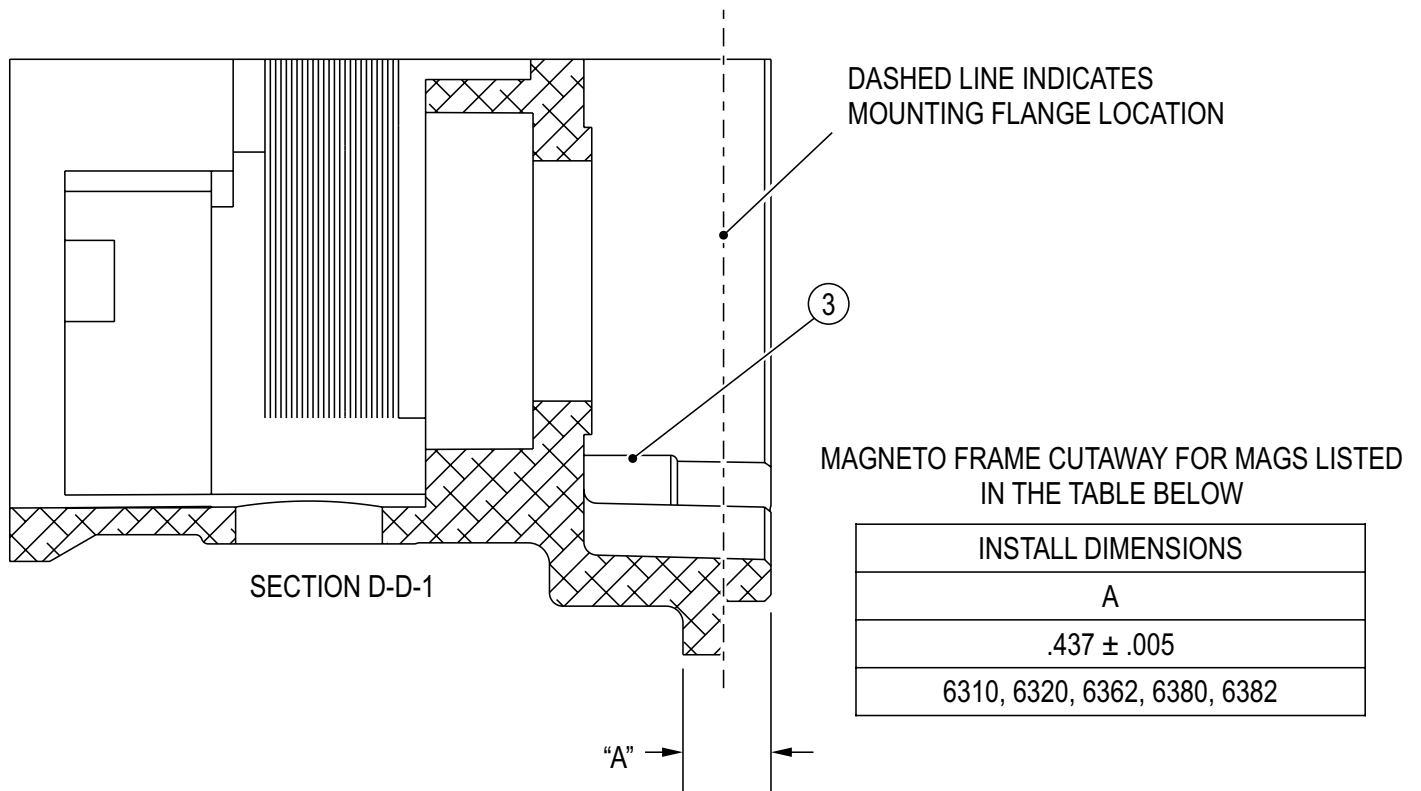
THIS DOCUMENT SUBJECT TO THE CONTROLS AND RESTRICTIONS ON THE FIRST PAGE

ISSUED			REVISED		
MO	DAY	YR	MO	DAY	YR
02	06	19			

Champion Aerospace LLC
1230 Old Norris Road
Liberty, SC/USA 29657
©2019 Champion Aerospace LLC

PAGE NO.	REVISION
3 of 8	

Service Bulletin



USE A CALIBRATED MEASURING DEVICE TO MEASURE DISTANCE "A", AS SHOWN IN CUTAWAY SECTION D-D-1. MAKE SURE THE FRAME SURFACE IS FREE OF CONTAMINANTS. ANY MEASUREMENT LESS THAN 0.432 INCH OF ANY PART OF THE STOP PIN (3), THE MAGNETO SHOULD BE REMOVED FROM SERVICE AND RETURNED TO CHAMPION FOR WARRANTY.

FIGURE 2. MAGNETO FRAME CUTAWAY SECTION D-D-1

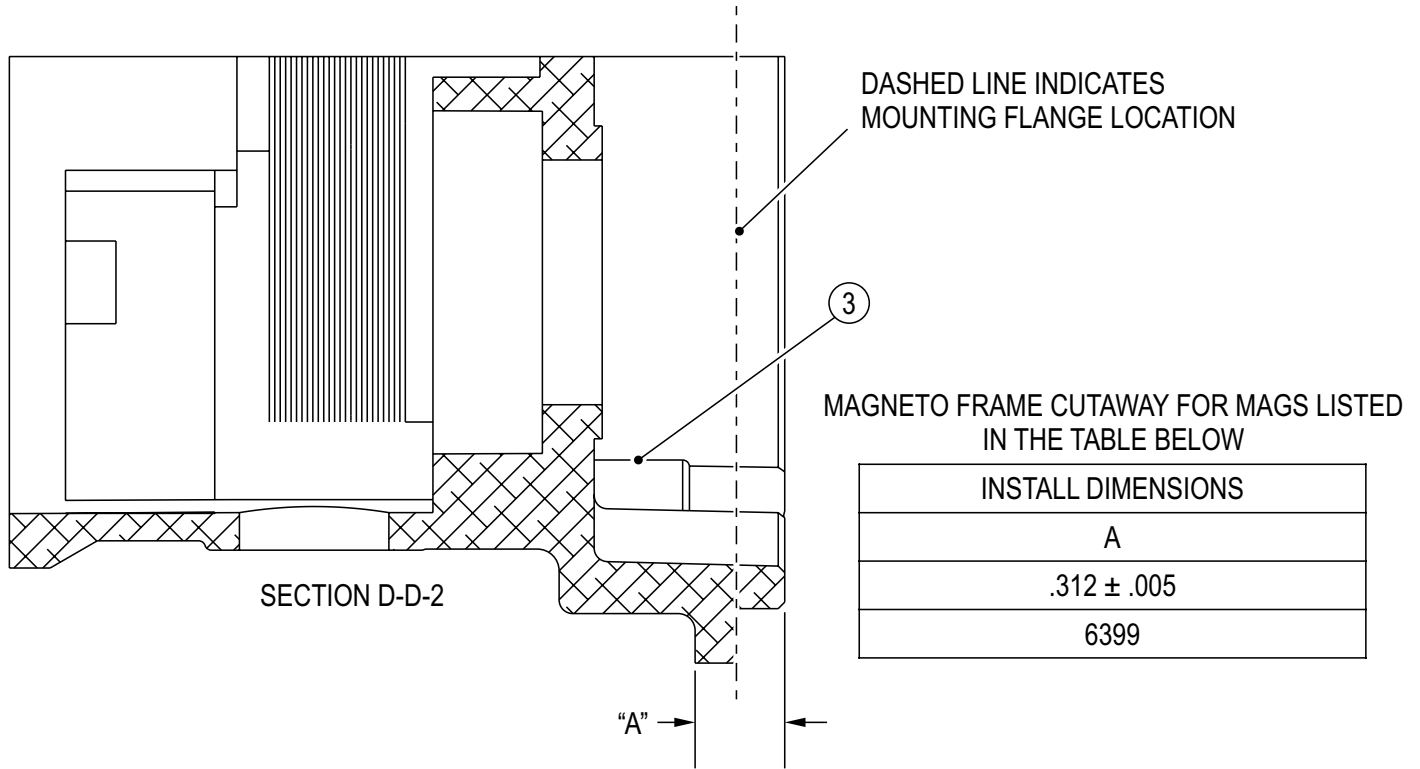
THIS DOCUMENT SUBJECT TO THE CONTROLS AND RESTRICTIONS ON THE FIRST PAGE

ISSUED			REVISED		
MO	DAY	YR	MO	DAY	YR
02	06	19			

Champion Aerospace LLC
1230 Old Norris Road
Liberty, SC/USA 29657
©2019 Champion Aerospace LLC

PAGE NO.	REVISION
4 of 8	

Service Bulletin



USE A CALIBRATED MEASURING DEVICE TO MEASURE DISTANCE "A", AS SHOWN IN CUTAWAY SECTION D-D-2. MAKE SURE THE FRAME SURFACE IS FREE OF CONTAMINANTS. ANY MEASUREMENT LESS THAN 0.307 INCH OF ANY PART OF THE STOP PIN (3), THE MAGNETO SHOULD BE REMOVED FROM SERVICE AND RETURNED TO CHAMPION FOR WARRANTY.

FIGURE 3. MAGNETO FRAME CUTAWAY SECTION D-D-2

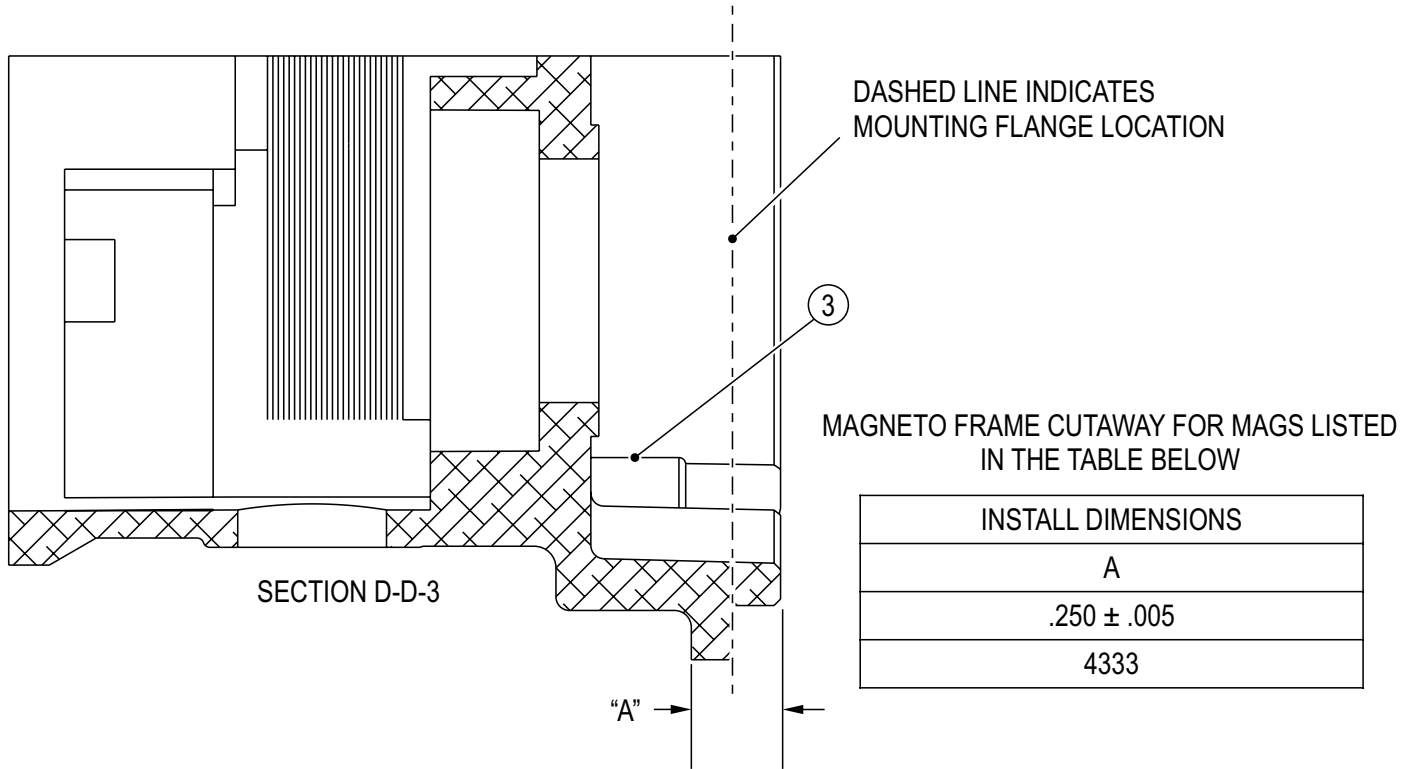
THIS DOCUMENT SUBJECT TO THE CONTROLS AND RESTRICTIONS ON THE FIRST PAGE

ISSUED			REVISED		
MO	DAY	YR	MO	DAY	YR
02	06	19			

Champion Aerospace LLC
1230 Old Norris Road
Liberty, SC/USA 29657
©2019 Champion Aerospace LLC

PAGE NO.	REVISION
5 of 8	

Service Bulletin



USE A CALIBRATED MEASURING DEVICE TO MEASURE DISTANCE "A", AS SHOWN IN CUTAWAY SECTION D-D-3. MAKE SURE THE FRAME SURFACE IS FREE OF CONTAMINANTS. ANY MEASUREMENT LESS THAN 0.245 INCH OF ANY PART OF THE STOP PIN (3), THE MAGNETO SHOULD BE REMOVED FROM SERVICE AND RETURNED TO CHAMPION FOR WARRANTY.

FIGURE 4. MAGNETO FRAME CUTAWAY SECTION D-D-3

THIS DOCUMENT SUBJECT TO THE CONTROLS AND RESTRICTIONS ON THE FIRST PAGE

ISSUED			REVISED		
MO	DAY	YR	MO	DAY	YR
02	06	19			

Champion Aerospace LLC
1230 Old Norris Road
Liberty, SC/USA 29657
©2019 Champion Aerospace LLC

PAGE NO.	REVISION
6 of 8	

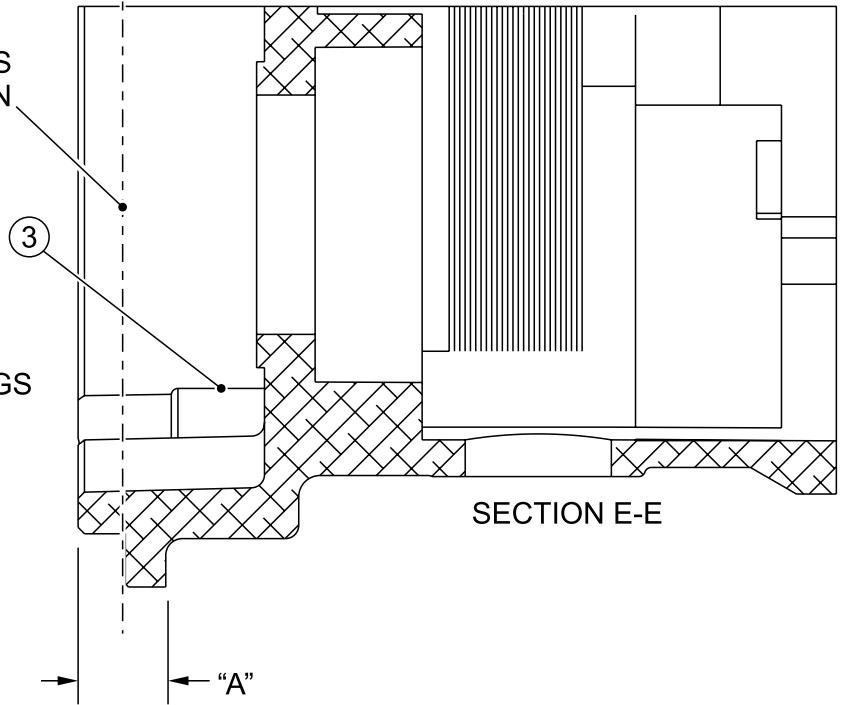
Service Bulletin

DASHED LINE INDICATES MOUNTING FLANGE LOCATION

3

MAGNETO FRAME CUTAWAY FOR MAGS LISTED IN THE TABLE BELOW

INSTALL DIMENSIONS
A
.437 ± .005
6314, 6324



USE A CALIBRATED MEASURING DEVICE TO MEASURE DISTANCE "A", AS SHOWN IN CUTAWAY SECTION E-E. MAKE SURE THE FRAME SURFACE IS FREE OF CONTAMINANTS. ANY MEASUREMENT LESS THAN 0.432 INCH OF ANY PART OF THE STOP PIN (3), THE MAGNETO SHOULD BE REMOVED FROM SERVICE AND RETURNED TO CHAMPION FOR WARRANTY.

FIGURE 5. MAGNETO FRAME CUTAWAY SECTION E-E

THIS DOCUMENT SUBJECT TO THE CONTROLS AND RESTRICTIONS ON THE FIRST PAGE

ISSUED			REVISED		
MO	DAY	YR	MO	DAY	YR
02	06	19			

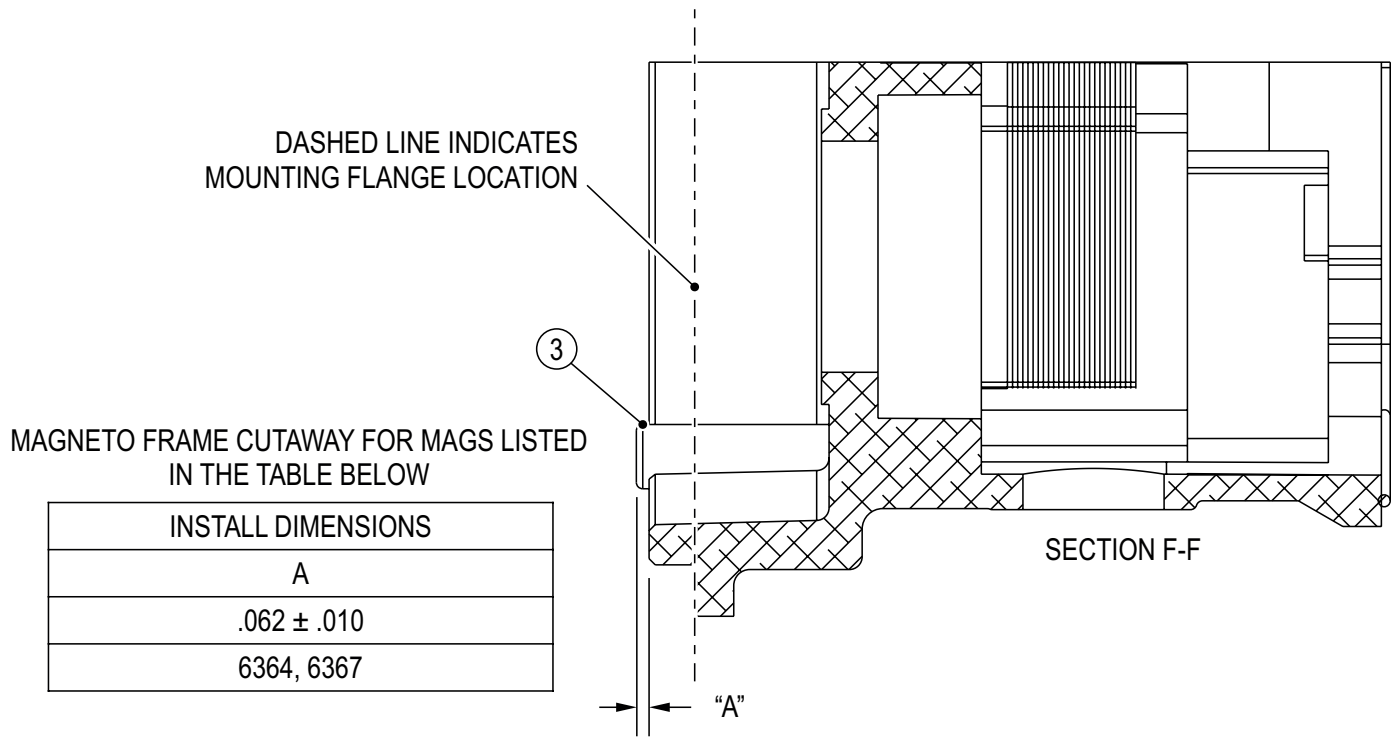
Champion Aerospace LLC
1230 Old Norris Road
Liberty, SC/USA 29657
©2019 Champion Aerospace LLC

PAGE NO.

REVISION

7 of 8

Service Bulletin



USE A CALIBRATED MEASURING DEVICE TO MEASURE DISTANCE "A", AS SHOWN IN CUTAWAY SECTION F-F. MAKE SURE THE FRAME SURFACE IS FREE OF CONTAMINANTS. ANY MEASUREMENT GREATER THAN .072 INCH OF ANY PART OF THE STOP PIN (3), THE MAGNETO SHOULD BE REMOVED FROM SERVICE AND RETURNED TO CHAMPION FOR WARRANTY.

FIGURE 6. MAGNETO FRAME CUTAWAY F-F

THIS DOCUMENT SUBJECT TO THE CONTROLS AND RESTRICTIONS ON THE FIRST PAGE

ISSUED			REVISED		
MO	DAY	YR	MO	DAY	YR
02	06	19			

Champion Aerospace LLC
1230 Old Norris Road
Liberty, SC/USA 29657
©2019 Champion Aerospace LLC

PAGE NO.

REVISION

8 of 8



652 Oliver Street
 Williamsport, PA 17701 U.S.A.
 Telephone +1 (877) 839-7878 (U.S. and Canada)
 Telephone +1 (570) 327-7222 (International)
 Facsimile +1 (570) 327-7101
 Email Technicalsupport@lycoming.com
www.lycoming.com

MANDATORY

SERVICE BULLETIN

DATE: March 14, 2019 Service Bulletin No. 637
Engineering Aspects are
FAA Approved

SUBJECT: Reprint of Slick/Champion Aerospace Service Bulletin SB1-19
 MODELS AFFECTED: All 4 and 6-cylinder Lycoming engines equipped with Slick 4300 or 6300 Series Impulse Coupled Magnetos.
 TIME OF COMPLIANCE: Next maintenance event, or 400 hours total time in service of the magneto (whichever occurs first), then every 500 hours after the initial inspection.

NOTICE: Incomplete review of all the information in this document can cause errors. Read the entire Service Bulletin to make sure you have a complete understanding of the requirements.

This Service Bulletin is notification of required action for mandatory compliance with Slick/Champion Aerospace Service Bulletin No. SB1-19 dated 02/08/2019, regarding Lycoming engine models with Slick 4300 or 6300 Series Impulse Coupled Magnetos (Serial Numbers between 16010001 thru 18050664 identified in Slick/Champion Aerospace Service Bulletin SB1-19) approved for use on Lycoming engines. These magnetos were manufactured between January 2016 and May 2018.

Slick/Champion Aerospace Service Bulletin No. SB1-19 dated 02/08/2019 is reprinted in its entirety as follows and is current at the time Lycoming Service Bulletin No. 637 is issued. However, compliance with this Service Bulletin is to be in accordance with the latest revision of the Slick/Champion Aerospace Service Bulletin No. SB1-19.

NOTICE: Refer to the latest revision of Service Instruction No. 1443 for cross references of Slick model numbers and Lycoming part numbers.

Required Action

1. Identify all Slick 4300 or 6300 series Impulse coupled magnetos with serial numbers of 16010001 through 18050664 installed on Lycoming 4 and 6-cylinder engines.
2. Identify all Slick 4300 or 6300 series Impulse coupled magnetos with serial numbers of 16010001 through 18050664 in spares inventory.
3. Obey the instructions in the attached Slick/Champion Aerospace Service Bulletin No. SB1-19.

Warranty Instructions for Engines / Magnetos Within the Factory Warranty Period

Upon completion of instructions in the attached Slick/Champion Aerospace Service Bulletin No. SB1-19 dated 02/08/2019:

If the magneto passes the inspection described in Slick/Champion Aerospace Service Bulletin No. SB1-19:

1. Re-install the magneto and time to the engine using appropriate methods and practices.
2. Contact an Authorized Lycoming Distributor and file a warranty claim for Removal and Installation Labor in accordance with the latest revision of *SSP-875 Removal and Installation Labor Allowance Guidebook*.



ISSUED			REVISED			PAGE NO.	REVISION
MO	DAY	YEAR	MO	DAY	YEAR		
03	14	19	--	--	--	1 of 10	--

If the magneto fails the inspection described in Slick/Champion Aerospace Service Bulletin No. SB1-19:

1. Contact an Authorized Lycoming Distributor to order a replacement magneto.
2. Upon receipt, install the replacement magneto.
3. Return the non-compliant magneto to Lycoming through the same Authorized Lycoming Distributor that ordered the replacement magneto and file a warranty claim for:
 - Reimbursement of the replacement magneto
 - Removal and Reinstallation Labor in accordance with the latest revision of *SSP-875 Removal and Installation Labor Allowance Guidebook*
 - Associated Standard Freight

Warranty Instructions for Engines / Magnetos No Longer Within the Factory Warranty Period

Upon completion of instructions in the attached Slick/Champion Aerospace Service Bulletin No. SB1-19 dated 02/08/2019.

If the magneto passes the inspection described in Slick/Champion Aerospace Service Bulletin No. SB1-19:

1. Re-install the magneto and time to the engine using appropriate methods and practices.

If the magneto fails the inspection described in Slick/Champion Aerospace Service Bulletin No. SB1-19:

1. Contact an Authorized Lycoming Distributor to order a replacement magneto.
2. Upon receipt, install the replacement magneto.
3. Return the non-compliant magneto to Lycoming through the same Authorized Lycoming Distributor that ordered the replacement magneto and file a warranty claim for:
 - Reimbursement of the replacement magneto

If you have any questions, contact Lycoming Field Service by phone at 570-327-7222 or 877-839-7878.

ISSUED			REVISED			PAGE NO.	REVISION	S.B. 637
MO	DAY	YEAR	MO	DAY	YEAR	2 of 10	--	
03	14	19	--	--	--			

Service Bulletin

TO: Aircraft Manufacturers, Aircraft Engine Manufacturers, Distributors, Dealers, Engine Maintainers, Engine Overhaul Facilities, Owners and Operators of Slick Aircraft Magnetos.

SUBJECT: Mandatory inspection of impulse coupled Slick magnetos

MAGNETO MODELS

AFFECTED: The following magneto models with serial numbers between 16010001 and 18050664:

4301, 4303, 4316, 4330, 4333, 4346, 4354, 4371, 4372, 4373, 4374, 4381, 4392, 6310, 6314, 6320, 6324, 6331, 6351, 6352, 6355, 6361, 6362, 6364, 6367, 6377, 6379, 6380, 6382, 6399

NOTE: 16010001 = SN manufacture date of January 2016 and
18050664 = SN manufacture date of May 2018

ENGINE MODELS

AFFECTED: 4300 series and 6300 series magnetos.

AIRFRAME MODELS

AFFECTED: 4300 series and 6300 series magnetos.

BACKGROUND INFORMATION:

There have been limited reports in which impulse coupling stop pins have moved relative to the factory placement within the magneto frame of Slick magnetos. There has been one report of a liberated stop pin. A liberated stop pin could potentially enter the gear train of the engine, resulting in damage to the gear train, damage to engine accessories and could ultimately cause catastrophic engine failure.

COMPLIANCE:

Inspect affected magneto models for movement of impulse coupling stop pin at the next convenient maintenance interval, not to exceed the next 100 hours or 400 hours Time in Service (TIS), and every 500 hours thereafter. Alternatively, replace the affected magneto with an approved model magneto, outside the above serial number range, or compliant with the SB1-19 dimensions herein for the stop pin. Document service bulletin compliance as written entry in the applicable Aircraft and/or Engine logbook.

PROOF OF COMPLIANCE:

Appropriate logbook entries. See SB1-19 COMPLIANCE and WARRANTY INFORMATION.

MAINTENANCE PARTS AFFECTED:

None.

Proprietary Statement

The information contained in this document is proprietary property of Champion Aerospace LLC. Receipt or possession of this information does not confer, license or imply any rights to use, sell or manufacture from this information. No reproduction of publication, in whole or in part, shall be made without the express written consent of Champion Aerospace LLC. All information is covered under full protection of the United States copyright laws.

Copyright ©2019, Champion Aerospace LLC. All rights reserved.

SUBJECT TO THE EAR, ECCN 9E991. THIS INFORMATION IS SUBJECT TO THE EXPORT CONTROL LAWS OF THE UNITED STATES, SPECIFICALLY INCLUDING THE EXPORT ADMINISTRATION REGULATIONS (EAR), 15 C.F.R. PART 730-744. TRANSFER, RETRANSFER, OR DISCLOSURE OF THIS DATA BY ANY MEANS TO A NON-U.S. PERSON (INDIVIDUAL OR COMPANY), WHETHER IN THE UNITED STATES OR ABROAD, WITHOUT ANY REQUIRED EXPORT LICENSE OR OTHER APPROVAL FROM THE U.S. GOVERNMENT IS PROHIBITED, INCLUDING WITHOUT LIMITATION ANY DIVERSION TO A MILITARY END USER OR USE IN A MILITARY APPLICATION.

ISSUED			REVISED			Champion Aerospace LLC 1230 Old Norris Road Liberty, SC/USA 29657 ©2019 Champion Aerospace LLC	PAGE NO.	REVISION
MO	DAY	YR	MO	DAY	YR		1 of 8	
02	06	19						

ISSUED			REVISED			PAGE NO.	REVISION	S.B. 637
MO	DAY	YEAR	MO	DAY	YEAR	3 of 10	--	
03	14	19	--	--	--			

Service Bulletin

PARTS REQUIRED

PER BULLETIN: Replacement magnetos as required.

TOOLS REQUIRED: T-118 mag timing pin, mag timing light, calibrated measuring device, and standard shop tools.

WEIGHT CHANGE: None.

REQUIRED SERVICE

LITERATURE: Refer to the latest revision of Champion Slick F-1100 Master Service Manual, as applicable, when performing the detailed instructions contained in this Service Bulletin.

WARRANTY

INFORMATION: NOTE: Labor is not included per Champion warranty policy.

If the magneto is within the listed s/n range and fails the inspection within these DETAILED INSTRUCTIONS, the magneto should be returned for warranty consideration through the original point of sale. Champion Aerospace will not accept direct returns. Affected magnetos that fail the required inspections must be returned with proof of purchase to the original point of sale (either Authorized Champion Distributor or Aircraft Engine Manufacturer) for warranty consideration. Champion waives the published warranty limits for TIS and calendar period for parts affected by this Service Bulletin. Warranty Credits will only be processed to an Authorized Champion Distributor or Aircraft Engine Manufacturer after final receipt of magneto and confirmation of required measurement. Champion reserves the right to deny warranty and return magneto if measurements are subsequently found to be compliant with the Service Bulletin.

DETAILED INSTRUCTIONS:

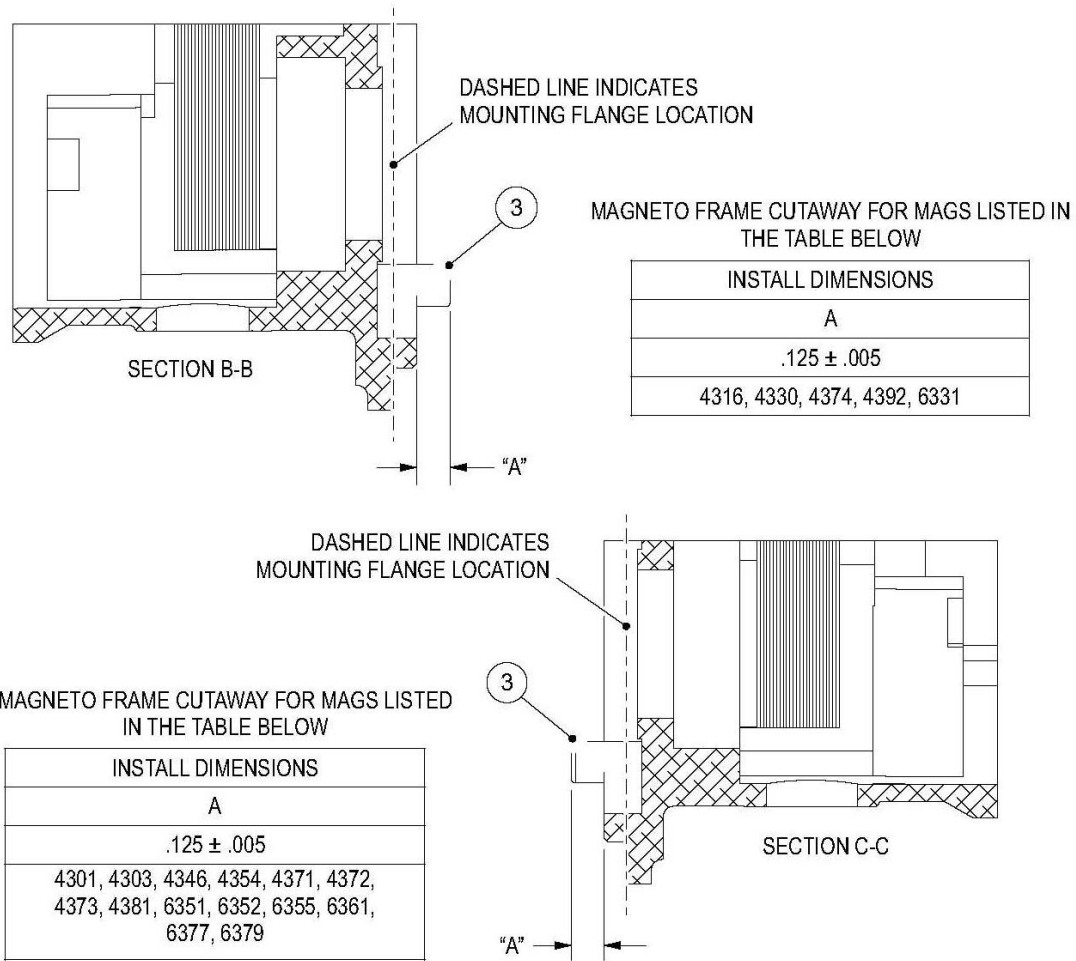
- Warranty form must include name, shipping address, model number, serial number of the magneto(s) being returned and TIS information in the box with the magneto(s). (Distributors have warranty forms)
- Do not leave drive gears installed on the magneto(s). Champion cannot guarantee return of these components
 - A. Locate magneto serial number on magneto dataplate. If magneto serial number is determined to be within the range specified in this bulletin, remove the magneto from engine in accordance with the latest revision of the engine manufacturer’s manual(s).
 - B. Inspect the magneto to confirm the necessary recess/projection (based on individual magneto type) of the stop pin. If the stop pin installation depth is not in compliance with the dimension shown in Figures 1 through 6, the magneto must be replaced with a new or serviceable unit that is in compliance with this service bulletin.
 - C. Repeat this inspection every 500 hours TIS, until end of product life.

THIS DOCUMENT SUBJECT TO THE CONTROLS AND RESTRICTIONS ON THE FIRST PAGE

ISSUED			REVISED			Champion Aerospace LLC 1230 Old Norris Road Liberty, SC/USA 29657 ©2019 Champion Aerospace LLC	PAGE NO.	REVISION
MO	DAY	YR	MO	DAY	YR			
02	06	19					2 of 8	

ISSUED			REVISED			PAGE NO.	REVISION	S.B. 637
MO	DAY	YEAR	MO	DAY	YEAR			
03	14	19	--	--	--	4 of 10	--	

Service Bulletin



USE A CALIBRATED MEASURING DEVICE TO MEASURE DISTANCE "A", AS SHOWN IN CUTAWAY SECTIONS B-B AND C-C. MAKE SURE THE FRAME SURFACE IS FREE OF CONTAMINANTS. ANY MEASUREMENT GREATER THAN 0.130 INCH OF ANY PART OF THE STOP PIN (3), THE MAGNETO SHOULD BE REMOVED FROM SERVICE AND RETURNED TO CHAMPION FOR WARRANTY.

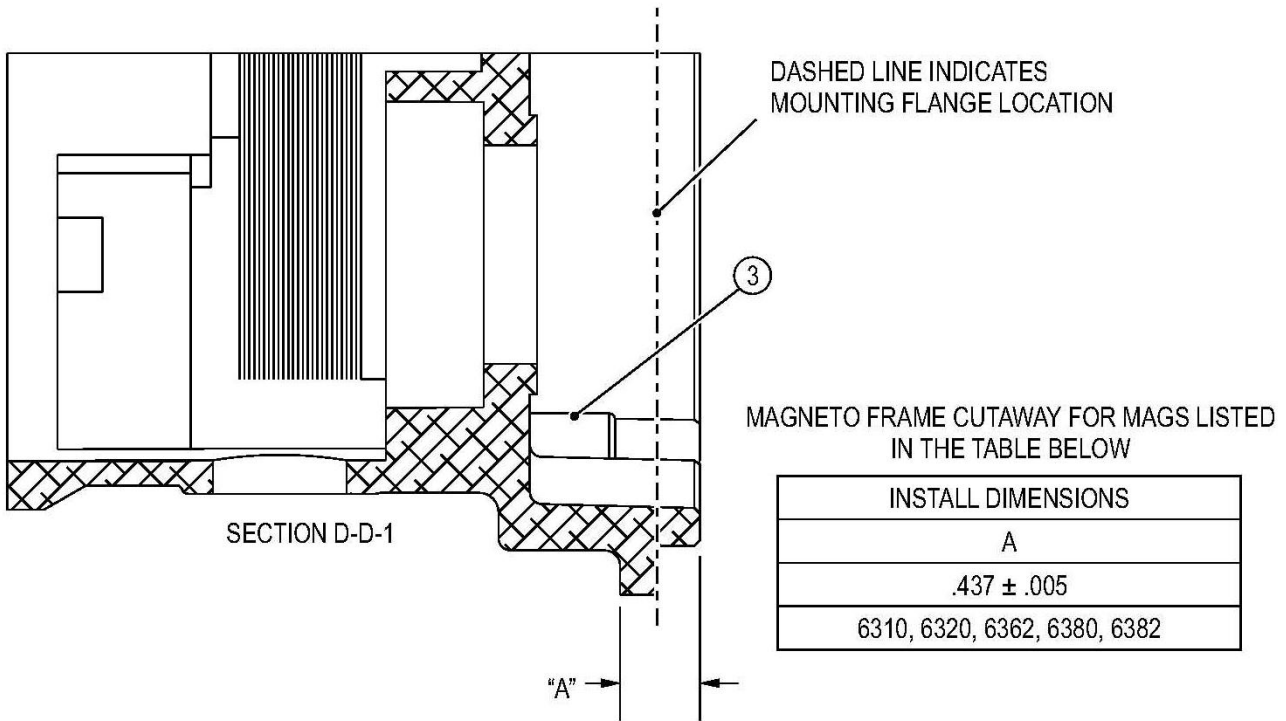
FIGURE 1. MAGNETO FRAME CUTAWAY SECTIONS B-B AND C-C

THIS DOCUMENT SUBJECT TO THE CONTROLS AND RESTRICTIONS ON THE FIRST PAGE

ISSUED			REVISED			Champion Aerospace LLC 1230 Old Norris Road Liberty, SC/USA 29657 ©2019 Champion Aerospace LLC	PAGE NO. 3 of 8	REVISION
MO	DAY	YR	MO	DAY	YR			
02	06	19						

ISSUED			REVISED			PAGE NO. 5 of 10	REVISION --	S.B. 637
MO	DAY	YEAR	MO	DAY	YEAR			
03	14	19	--	--	--			

Service Bulletin



USE A CALIBRATED MEASURING DEVICE TO MEASURE DISTANCE "A", AS SHOWN IN CUTAWAY SECTION D-D-1. MAKE SURE THE FRAME SURFACE IS FREE OF CONTAMINANTS. ANY MEASUREMENT LESS THAN 0.432 INCH OF ANY PART OF THE STOP PIN (3), THE MAGNETO SHOULD BE REMOVED FROM SERVICE AND RETURNED TO CHAMPION FOR WARRANTY.

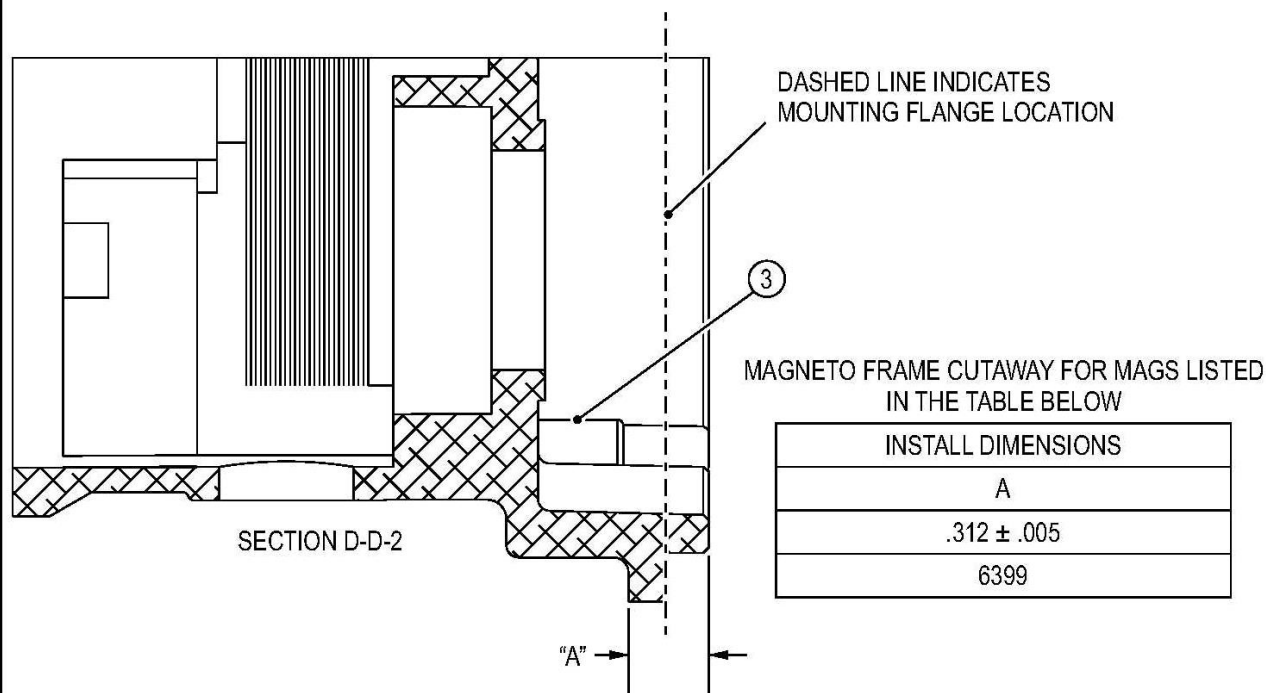
FIGURE 2. MAGNETO FRAME CUTAWAY SECTION D-D-1

THIS DOCUMENT SUBJECT TO THE CONTROLS AND RESTRICTIONS ON THE FIRST PAGE

ISSUED			REVISED			Champion Aerospace LLC 1230 Old Norris Road Liberty, SC/USA 29657 ©2019 Champion Aerospace LLC	PAGE NO.	REVISION
MO	DAY	YR	MO	DAY	YR		4 of 8	
02	06	19						

ISSUED			REVISED			PAGE NO.	REVISION	S.B. 637
MO	DAY	YEAR	MO	DAY	YEAR	6 of 10	--	
03	14	19	--	--	--			

Service Bulletin



USE A CALIBRATED MEASURING DEVICE TO MEASURE DISTANCE "A", AS SHOWN IN CUTAWAY SECTION D-D-2. MAKE SURE THE FRAME SURFACE IS FREE OF CONTAMINANTS. ANY MEASUREMENT LESS THAN 0.307 INCH OF ANY PART OF THE STOP PIN (3), THE MAGNETO SHOULD BE REMOVED FROM SERVICE AND RETURNED TO CHAMPION FOR WARRANTY.

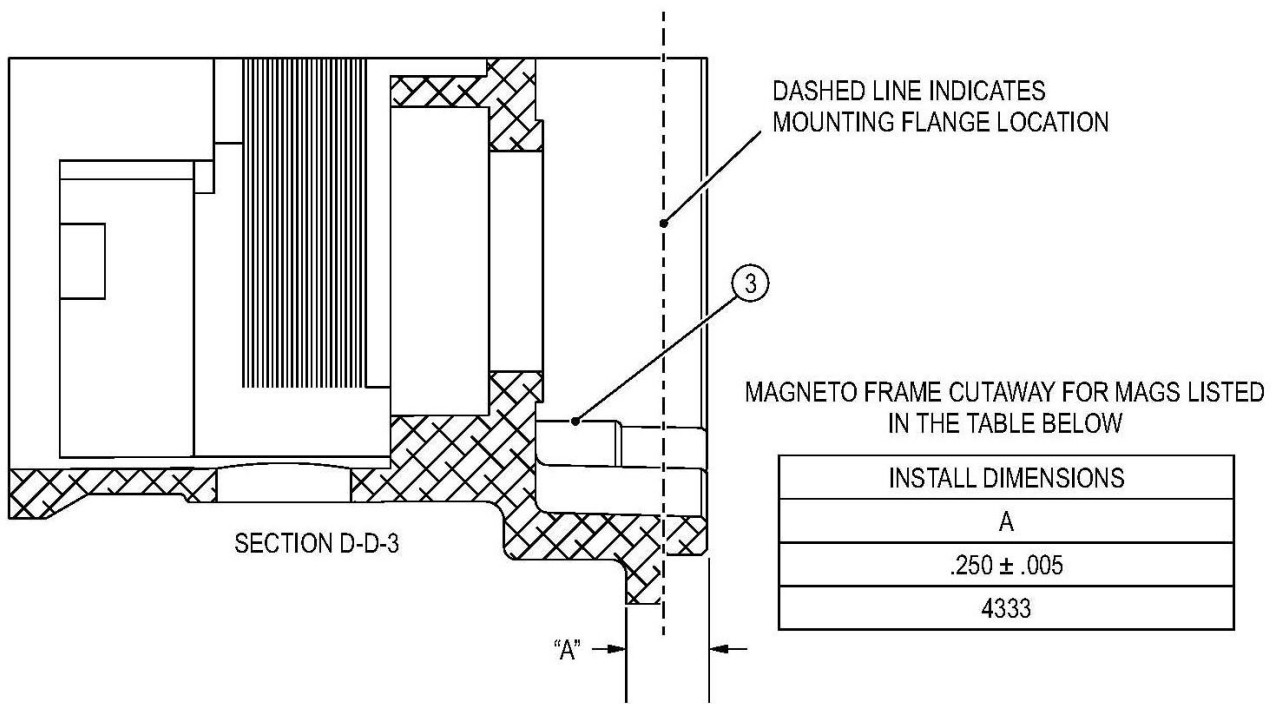
FIGURE 3. MAGNETO FRAME CUTAWAY SECTION D-D-2

THIS DOCUMENT SUBJECT TO THE CONTROLS AND RESTRICTIONS ON THE FIRST PAGE

ISSUED			REVISED			Champion Aerospace LLC 1230 Old Norris Road Liberty, SC/USA 29657 ©2019 Champion Aerospace LLC	PAGE NO.	REVISION
MO	DAY	YR	MO	DAY	YR			
02	06	19				5 of 8		

ISSUED			REVISED			PAGE NO.	REVISION	S.B. 637
MO	DAY	YEAR	MO	DAY	YEAR			
03	14	19	--	--	--	7 of 10	--	

Service Bulletin



USE A CALIBRATED MEASURING DEVICE TO MEASURE DISTANCE "A", AS SHOWN IN CUTAWAY SECTION D-D-3. MAKE SURE THE FRAME SURFACE IS FREE OF CONTAMINANTS. ANY MEASUREMENT LESS THAN 0.245 INCH OF ANY PART OF THE STOP PIN (3), THE MAGNETO SHOULD BE REMOVED FROM SERVICE AND RETURNED TO CHAMPION FOR WARRANTY.

FIGURE 4. MAGNETO FRAME CUTAWAY SECTION D-D-3

THIS DOCUMENT SUBJECT TO THE CONTROLS AND RESTRICTIONS ON THE FIRST PAGE

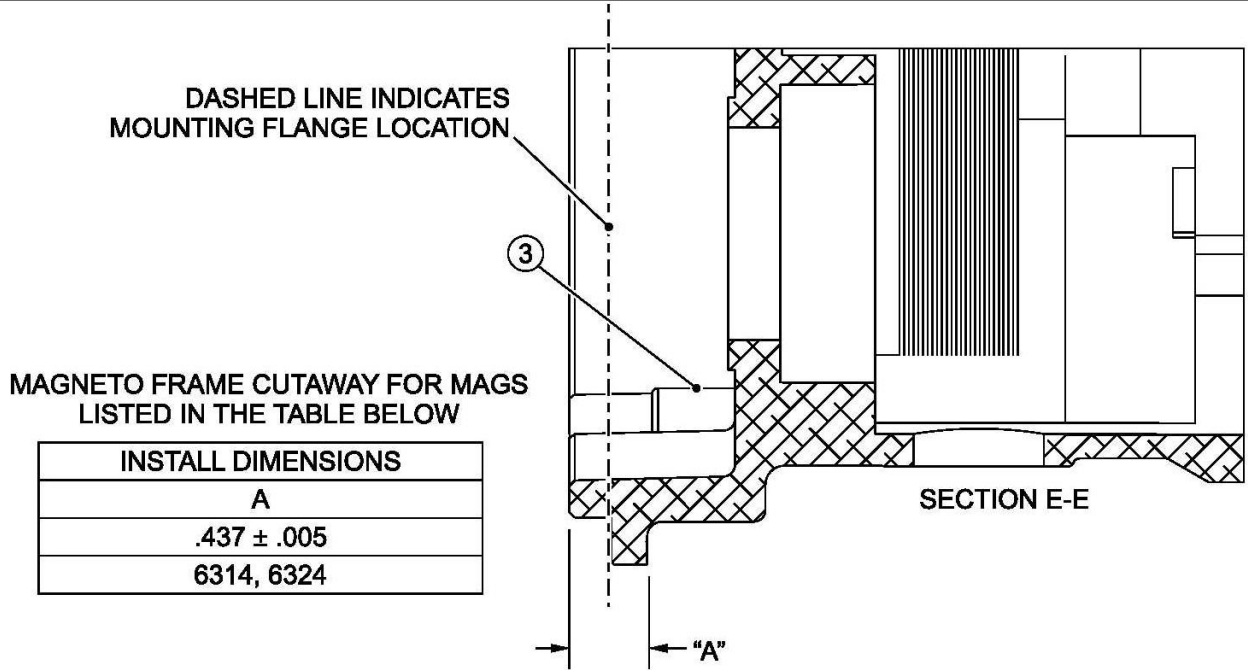
ISSUED			REVISED		
MO	DAY	YR	MO	DAY	YR
02	06	19			

Champion Aerospace LLC
1230 Old Norris Road
Liberty, SC/USA 29657
©2019 Champion Aerospace LLC

PAGE NO.	REVISION
6 of 8	

ISSUED			REVISED			PAGE NO.	REVISION
MO	DAY	YEAR	MO	DAY	YEAR	8 of 10	--
03	14	19	--	--	--		

Service Bulletin



USE A CALIBRATED MEASURING DEVICE TO MEASURE DISTANCE "A", AS SHOWN IN CUTAWAY SECTION E-E. MAKE SURE THE FRAME SURFACE IS FREE OF CONTAMINANTS. ANY MEASUREMENT LESS THAN 0.432 INCH OF ANY PART OF THE STOP PIN (3), THE MAGNETO SHOULD BE REMOVED FROM SERVICE AND RETURNED TO CHAMPION FOR WARRANTY.

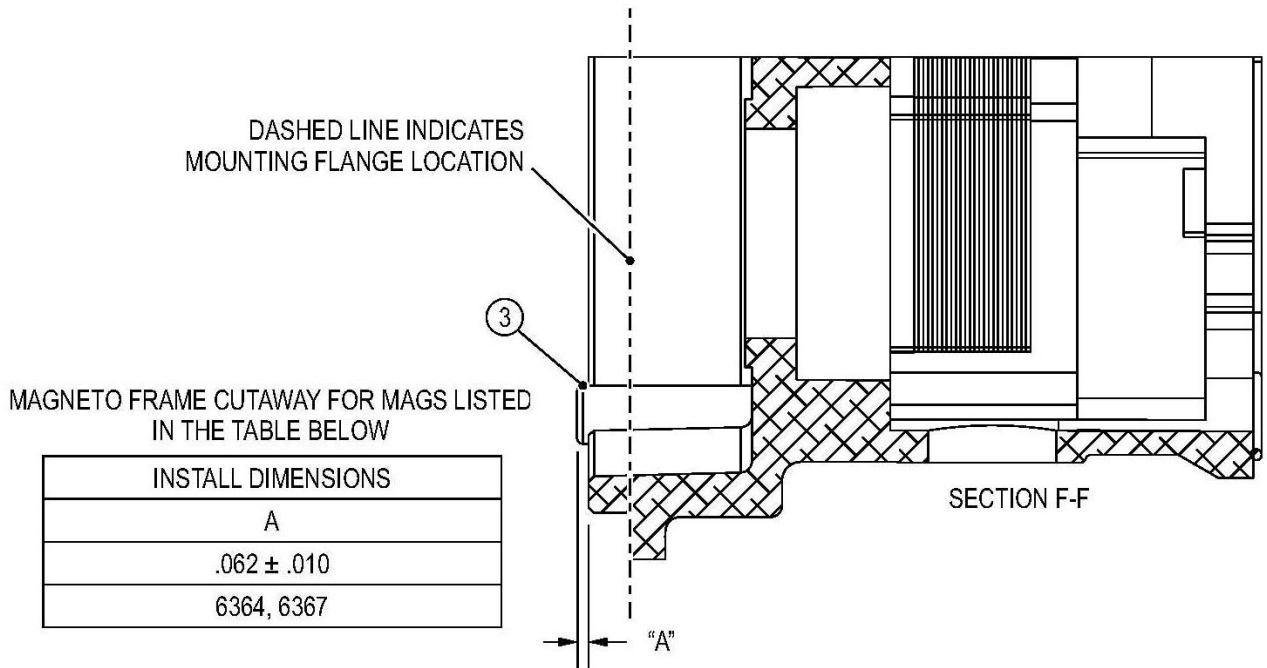
FIGURE 5. MAGNETO FRAME CUTAWAY SECTION E-E

THIS DOCUMENT SUBJECT TO THE CONTROLS AND RESTRICTIONS ON THE FIRST PAGE

ISSUED			REVISED			Champion Aerospace LLC 1230 Old Norris Road Liberty, SC/USA 29657 ©2019 Champion Aerospace LLC	PAGE NO.	REVISION
MO	DAY	YR	MO	DAY	YR		7 of 8	
02	06	19						

ISSUED			REVISED			PAGE NO.	REVISION	S.B. 637
MO	DAY	YEAR	MO	DAY	YEAR			
03	14	19	--	--	--	9 of 10	--	

Service Bulletin



USE A CALIBRATED MEASURING DEVICE TO MEASURE DISTANCE "A", AS SHOWN IN CUTAWAY SECTION F-F. MAKE SURE THE FRAME SURFACE IS FREE OF CONTAMINANTS. ANY MEASUREMENT GREATER THAN .072 INCH OF ANY PART OF THE STOP PIN (3), THE MAGNETO SHOULD BE REMOVED FROM SERVICE AND RETURNED TO CHAMPION FOR WARRANTY.

FIGURE 6. MAGNETO FRAME CUTAWAY F-F

THIS DOCUMENT SUBJECT TO THE CONTROLS AND RESTRICTIONS ON THE FIRST PAGE

ISSUED			REVISED			Champion Aerospace LLC 1230 Old Norris Road Liberty, SC/USA 29657 ©2019 Champion Aerospace LLC	PAGE NO.	REVISION
MO	DAY	YR	MO	DAY	YR			
02	06	19				8 of 8		

ISSUED			REVISED			PAGE NO.	REVISION	S.B. 637
MO	DAY	YEAR	MO	DAY	YEAR			
03	14	19	--	--	--	10 of 10	--	

Service Bulletin

TO: Aircraft Manufacturers, Aircraft Engine Manufacturers, Distributors, Dealers, Engine Maintainers, Engine Overhaul Facilities, Owners and Operators of Slick Aircraft Magnetos.

SUBJECT: Mandatory inspection of impulse coupled Slick magnetos

MAGNETO MODELS

AFFECTED: The following magneto models with serial numbers between 16010001 and 18050664:

4301, 4303, 4316, 4330, 4333, 4346, 4354, 4371, 4372, 4373, 4374, 4381, 4392, 6310, 6314, 6320, 6324, 6331, 6351, 6352, 6355, 6361, 6362, 6364, 6367, 6377, 6379, 6380, 6382, 6399

NOTE: 16010001 = SN manufacture date of January 2016 and
18050664 = SN manufacture date of May 2018

ENGINE MODELS

AFFECTED: 4300 series and 6300 series magnetos.

AIRFRAME MODELS

AFFECTED: 4300 series and 6300 series magnetos.

BACKGROUND INFORMATION:

There have been limited reports in which impulse coupling stop pins have moved relative to the factory placement within the magneto frame of Slick magnetos. There has been one report of a liberated stop pin. A liberated stop pin could potentially enter the gear train of the engine, resulting in damage to the gear train, damage to engine accessories and could ultimately cause catastrophic engine failure.

COMPLIANCE:

Inspect affected magneto models for movement of impulse coupling stop pin at the next convenient maintenance interval, not to exceed the next 100 hours or 400 hours Time in Service (TIS), and every 500 hours thereafter. Alternatively, replace the affected magneto with an approved model magneto, outside the above serial number range, or compliant with the SB1-19 dimensions herein for the stop pin. Document service bulletin compliance as written entry in the applicable Aircraft and/or Engine logbook.

PROOF OF COMPLIANCE:

Appropriate logbook entries. See SB1-19 COMPLIANCE and WARRANTY INFORMATION.

MAINTENANCE PARTS AFFECTED:

None.

Proprietary Statement

The information contained in this document is proprietary property of Champion Aerospace LLC. Receipt or possession of this information does not confer, license or imply any rights to use, sell or manufacture from this information. No reproduction of publication, in whole or in part, shall be made without the express written consent of Champion Aerospace LLC. All information is covered under full protection of the United States copyright laws.

Copyright ©2019, Champion Aerospace LLC. All rights reserved.

SUBJECT TO THE EAR, ECCN 9E991. THIS INFORMATION IS SUBJECT TO THE EXPORT CONTROL LAWS OF THE UNITED STATES, SPECIFICALLY INCLUDING THE EXPORT ADMINISTRATION REGULATIONS (EAR), 15 C.F.R. PART 730-744. TRANSFER, RETRANSFER, OR DISCLOSURE OF THIS DATA BY ANY MEANS TO A NON-U.S. PERSON (INDIVIDUAL OR COMPANY), WHETHER IN THE UNITED STATES OR ABROAD, WITHOUT ANY REQUIRED EXPORT LICENSE OR OTHER APPROVAL FROM THE U.S. GOVERNMENT IS PROHIBITED, INCLUDING WITHOUT LIMITATION ANY DIVERSION TO A MILITARY END USER OR USE IN A MILITARY APPLICATION.

ISSUED			REVISED			Champion Aerospace LLC 1230 Old Norris Road Liberty, SC/USA 29657 ©2019 Champion Aerospace LLC	PAGE NO.	REVISION
MO	DAY	YR	MO	DAY	YR			
02	06	19				1 of 8		

Service Bulletin

**PARTS REQUIRED
PER BULLETIN:**

Replacement magnetos as required.

TOOLS REQUIRED:

T-118 mag timing pin, mag timing light, calibrated measuring device, and standard shop tools.

WEIGHT CHANGE:

None.

**REQUIRED SERVICE
LITERATURE:**

Refer to the latest revision of Champion Slick F-1100 Master Service Manual, as applicable, when performing the detailed instructions contained in this Service Bulletin.

**WARRANTY
INFORMATION:**

NOTE: Labor is not included per Champion warranty policy.

If the magneto is within the listed s/n range and fails the inspection within these DETAILED INSTRUCTIONS, the magneto should be returned for warranty consideration through the original point of sale. Champion Aerospace will not accept direct returns. Affected magnetos that fail the required inspections must be returned with proof of purchase to the original point of sale (either Authorized Champion Distributor or Aircraft Engine Manufacturer) for warranty consideration. Champion waives the published warranty limits for TIS and calendar period for parts affected by this Service Bulletin. Warranty Credits will only be processed to an Authorized Champion Distributor or Aircraft Engine Manufacturer after final receipt of magneto and confirmation of required measurement. Champion reserves the right to deny warranty and return magneto if measurements are subsequently found to be compliant with the Service Bulletin.

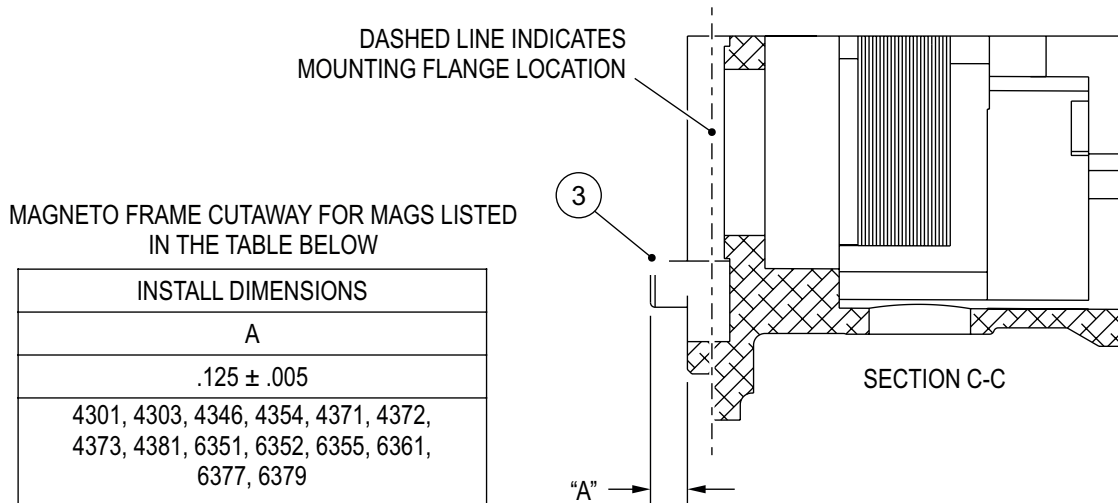
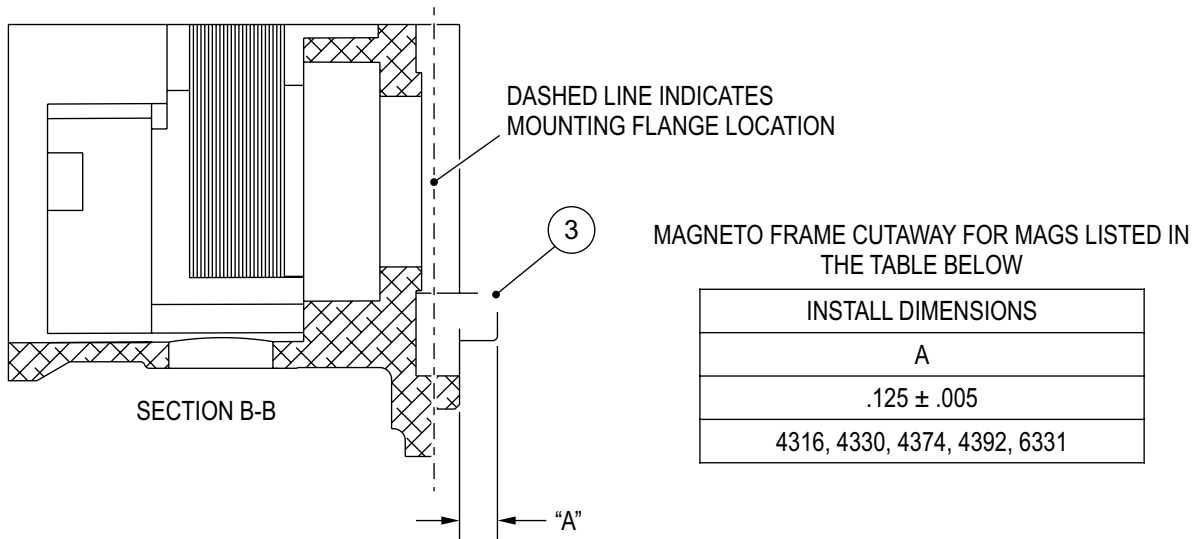
**DETAILED
INSTRUCTIONS:**

- Warranty form must include name, shipping address, model number, serial number of the magneto(s) being returned and TIS information in the box with the magneto(s). (Distributors have warranty forms)
- Do not leave drive gears installed on the magneto(s). Champion cannot guarantee return of these components
 - A. Locate magneto serial number on magneto dataplate. If magneto serial number is determined to be within the range specified in this bulletin, remove the magneto from engine in accordance with the latest revision of the engine manufacturer's manual(s).
 - B. Inspect the magneto to confirm the necessary recess/projection (based on individual magneto type) of the stop pin. If the stop pin installation depth is not in compliance with the dimension shown in Figures 1 through 6, the magneto must be replaced with a new or serviceable unit that is in compliance with this service bulletin.
 - C. Repeat this inspection every 500 hours TIS, until end of product life.

THIS DOCUMENT SUBJECT TO THE CONTROLS AND RESTRICTIONS ON THE FIRST PAGE

ISSUED			REVISED			Champion Aerospace LLC 1230 Old Norris Road Liberty, SC/USA 29657 ©2019 Champion Aerospace LLC	PAGE NO.	REVISION
MO	DAY	YR	MO	DAY	YR			
02	06	19				2 of 8		

Service Bulletin



USE A CALIBRATED MEASURING DEVICE TO MEASURE DISTANCE "A", AS SHOWN IN CUTAWAY SECTIONS B-B AND C-C. MAKE SURE THE FRAME SURFACE IS FREE OF CONTAMINANTS. ANY MEASUREMENT GREATER THAN 0.130 INCH OF ANY PART OF THE STOP PIN (3), THE MAGNETO SHOULD BE REMOVED FROM SERVICE AND RETURNED TO CHAMPION FOR WARRANTY.

FIGURE 1. MAGNETO FRAME CUTAWAY SECTIONS B-B AND C-C

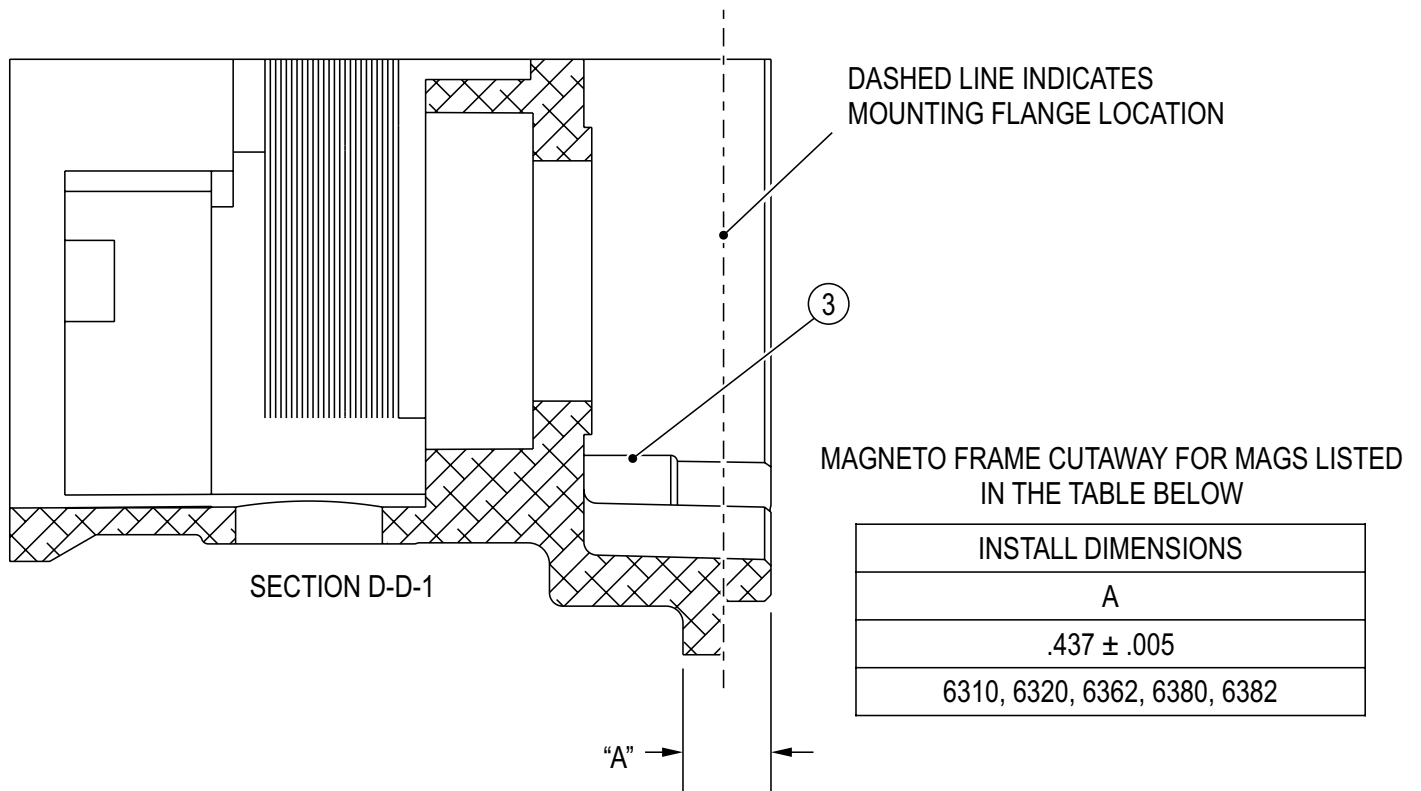
THIS DOCUMENT SUBJECT TO THE CONTROLS AND RESTRICTIONS ON THE FIRST PAGE

ISSUED			REVISED		
MO	DAY	YR	MO	DAY	YR
02	06	19			

Champion Aerospace LLC
1230 Old Norris Road
Liberty, SC/USA 29657
©2019 Champion Aerospace LLC

PAGE NO.	REVISION
3 of 8	

Service Bulletin



USE A CALIBRATED MEASURING DEVICE TO MEASURE DISTANCE "A", AS SHOWN IN CUTAWAY SECTION D-D-1. MAKE SURE THE FRAME SURFACE IS FREE OF CONTAMINANTS. ANY MEASUREMENT LESS THAN 0.432 INCH OF ANY PART OF THE STOP PIN (3), THE MAGNETO SHOULD BE REMOVED FROM SERVICE AND RETURNED TO CHAMPION FOR WARRANTY.

FIGURE 2. MAGNETO FRAME CUTAWAY SECTION D-D-1

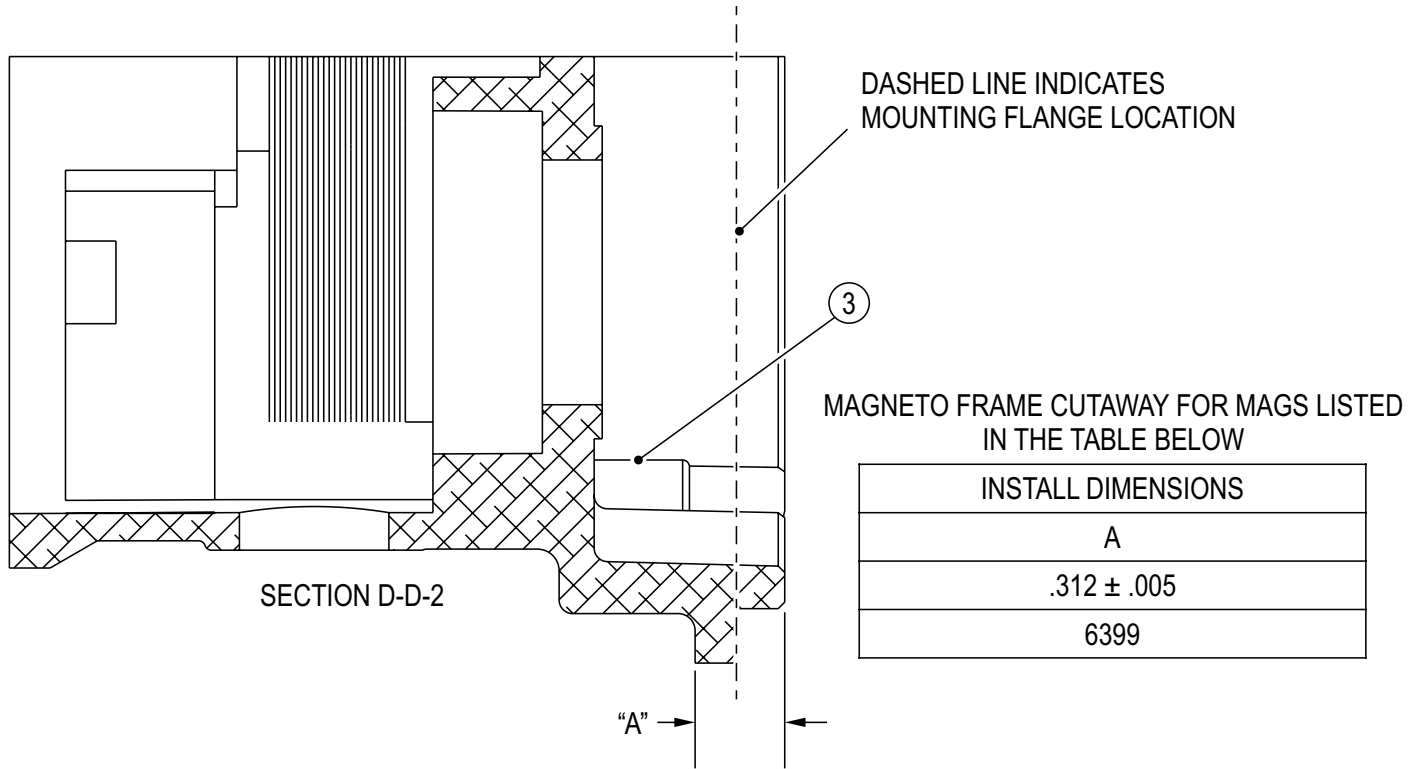
THIS DOCUMENT SUBJECT TO THE CONTROLS AND RESTRICTIONS ON THE FIRST PAGE

ISSUED			REVISED		
MO	DAY	YR	MO	DAY	YR
02	06	19			

Champion Aerospace LLC
1230 Old Norris Road
Liberty, SC/USA 29657
©2019 Champion Aerospace LLC

PAGE NO.	REVISION
4 of 8	

Service Bulletin



USE A CALIBRATED MEASURING DEVICE TO MEASURE DISTANCE "A", AS SHOWN IN CUTAWAY SECTION D-D-2. MAKE SURE THE FRAME SURFACE IS FREE OF CONTAMINANTS. ANY MEASUREMENT LESS THAN 0.307 INCH OF ANY PART OF THE STOP PIN (3), THE MAGNETO SHOULD BE REMOVED FROM SERVICE AND RETURNED TO CHAMPION FOR WARRANTY.

FIGURE 3. MAGNETO FRAME CUTAWAY SECTION D-D-2

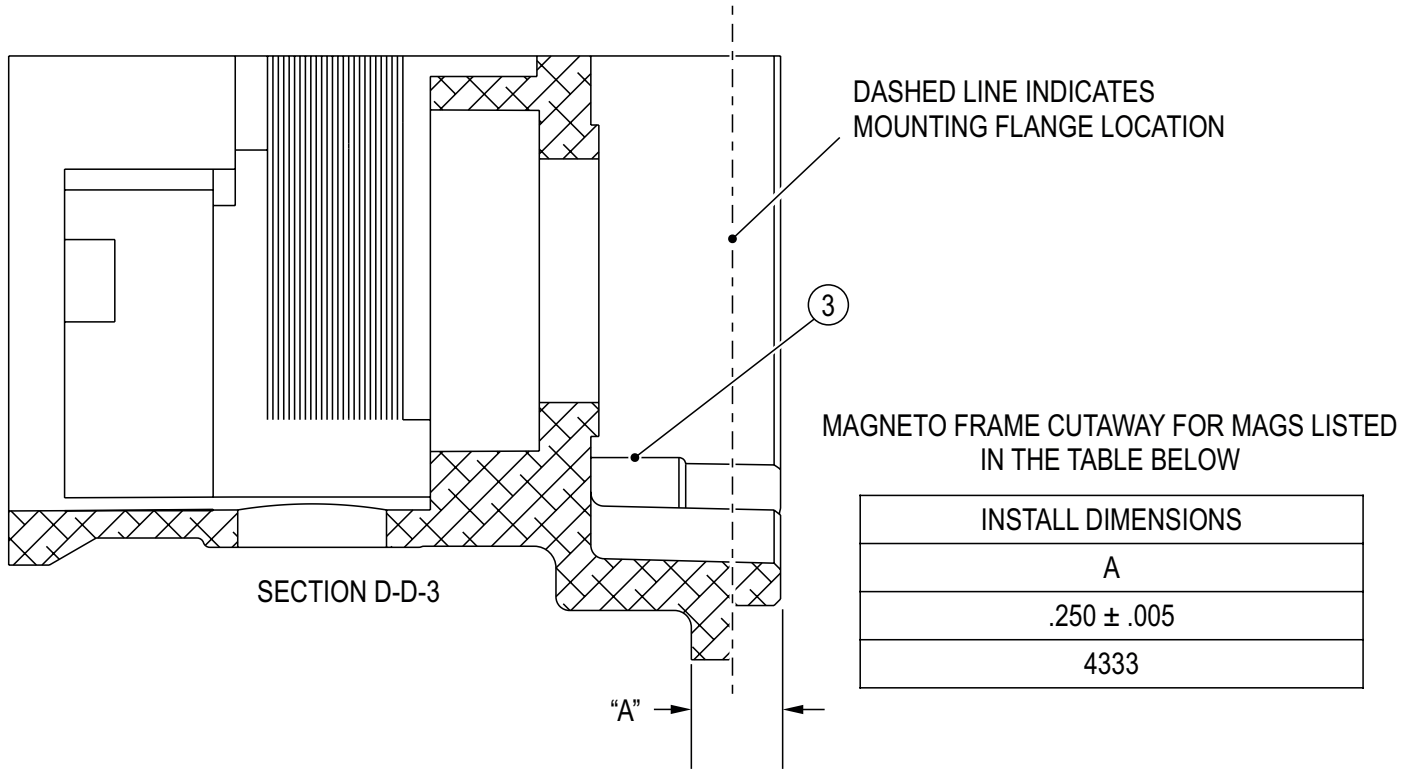
THIS DOCUMENT SUBJECT TO THE CONTROLS AND RESTRICTIONS ON THE FIRST PAGE

ISSUED			REVISED		
MO	DAY	YR	MO	DAY	YR
02	06	19			

Champion Aerospace LLC
1230 Old Norris Road
Liberty, SC/USA 29657
©2019 Champion Aerospace LLC

PAGE NO.	REVISION
5 of 8	

Service Bulletin



USE A CALIBRATED MEASURING DEVICE TO MEASURE DISTANCE "A", AS SHOWN IN CUTAWAY SECTION D-D-3. MAKE SURE THE FRAME SURFACE IS FREE OF CONTAMINANTS. ANY MEASUREMENT LESS THAN 0.245 INCH OF ANY PART OF THE STOP PIN (3), THE MAGNETO SHOULD BE REMOVED FROM SERVICE AND RETURNED TO CHAMPION FOR WARRANTY.

FIGURE 4. MAGNETO FRAME CUTAWAY SECTION D-D-3

THIS DOCUMENT SUBJECT TO THE CONTROLS AND RESTRICTIONS ON THE FIRST PAGE

ISSUED			REVISED		
MO	DAY	YR	MO	DAY	YR
02	06	19			

Champion Aerospace LLC
1230 Old Norris Road
Liberty, SC/USA 29657
©2019 Champion Aerospace LLC

PAGE NO.	REVISION
6 of 8	

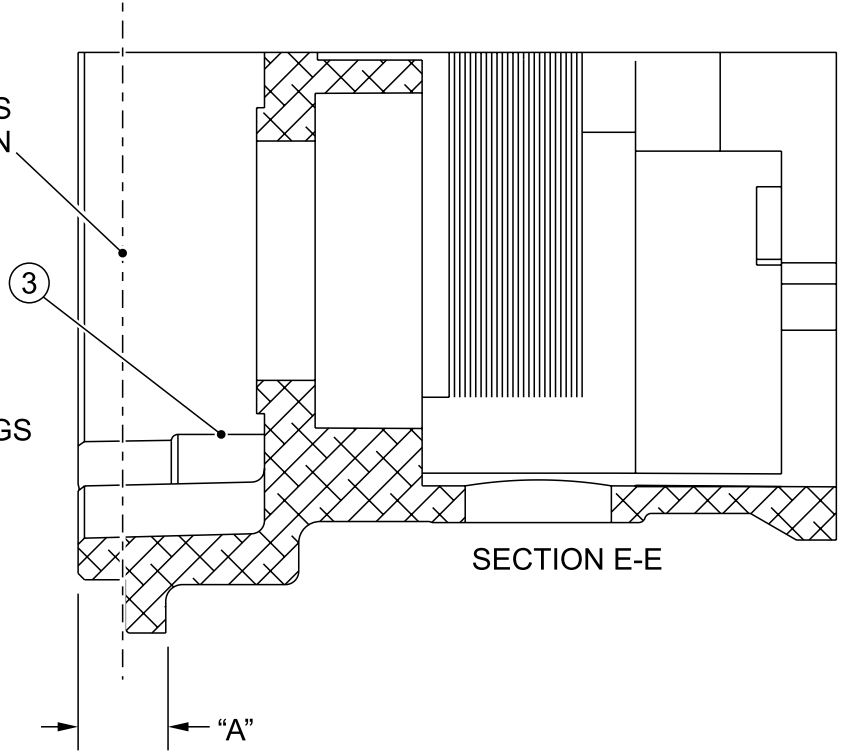
Service Bulletin

DASHED LINE INDICATES MOUNTING FLANGE LOCATION

3

MAGNETO FRAME CUTAWAY FOR MAGS LISTED IN THE TABLE BELOW

INSTALL DIMENSIONS
A
.437 ± .005
6314, 6324



USE A CALIBRATED MEASURING DEVICE TO MEASURE DISTANCE "A", AS SHOWN IN CUTAWAY SECTION E-E. MAKE SURE THE FRAME SURFACE IS FREE OF CONTAMINANTS. ANY MEASUREMENT LESS THAN 0.432 INCH OF ANY PART OF THE STOP PIN (3), THE MAGNETO SHOULD BE REMOVED FROM SERVICE AND RETURNED TO CHAMPION FOR WARRANTY.

FIGURE 5. MAGNETO FRAME CUTAWAY SECTION E-E

THIS DOCUMENT SUBJECT TO THE CONTROLS AND RESTRICTIONS ON THE FIRST PAGE

ISSUED			REVISED		
MO	DAY	YR	MO	DAY	YR
02	06	19			

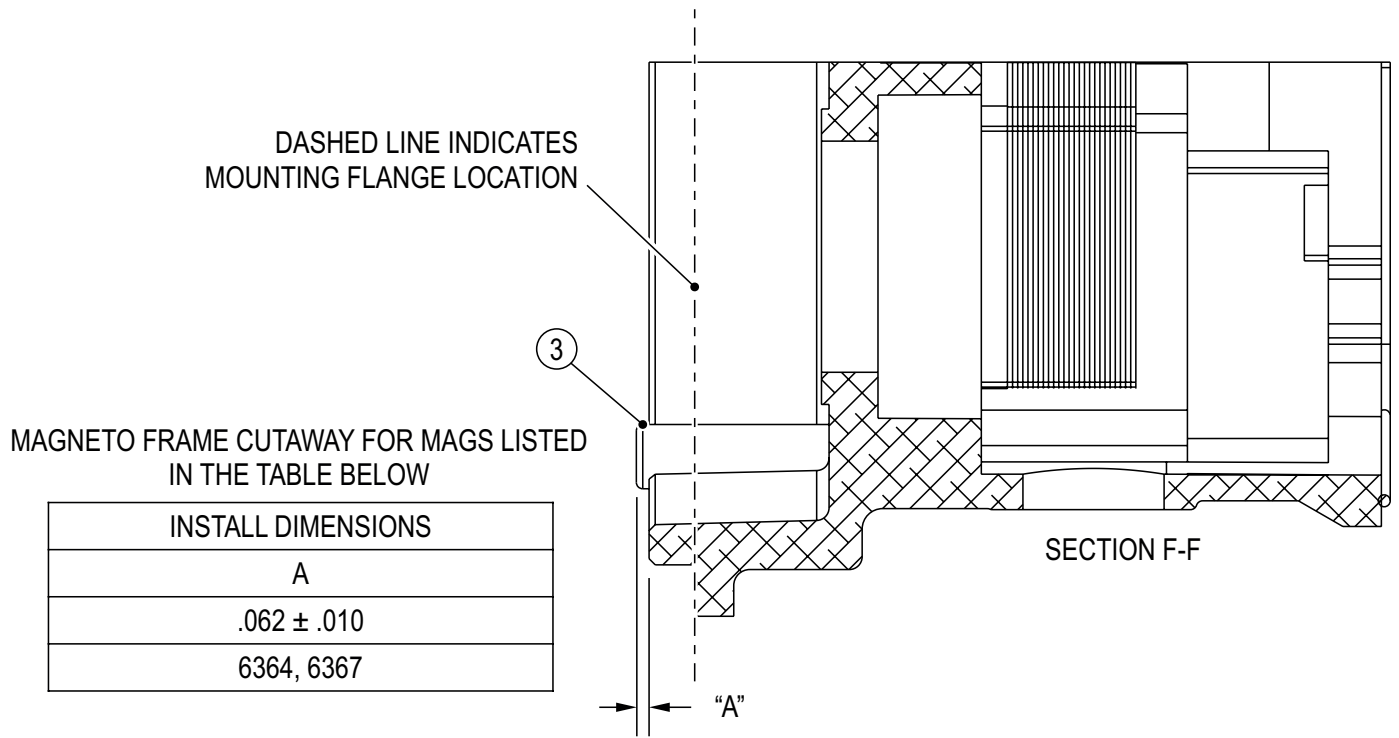
Champion Aerospace LLC
1230 Old Norris Road
Liberty, SC/USA 29657
©2019 Champion Aerospace LLC

PAGE NO.

REVISION

7 of 8

Service Bulletin



USE A CALIBRATED MEASURING DEVICE TO MEASURE DISTANCE "A", AS SHOWN IN CUTAWAY SECTION F-F. MAKE SURE THE FRAME SURFACE IS FREE OF CONTAMINANTS. ANY MEASUREMENT GREATER THAN .072 INCH OF ANY PART OF THE STOP PIN (3), THE MAGNETO SHOULD BE REMOVED FROM SERVICE AND RETURNED TO CHAMPION FOR WARRANTY.

FIGURE 6. MAGNETO FRAME CUTAWAY F-F

THIS DOCUMENT SUBJECT TO THE CONTROLS AND RESTRICTIONS ON THE FIRST PAGE

ISSUED			REVISED		
MO	DAY	YR	MO	DAY	YR
02	06	19			

Champion Aerospace LLC
1230 Old Norris Road
Liberty, SC/USA 29657
©2019 Champion Aerospace LLC

PAGE NO.

REVISION

8 of 8