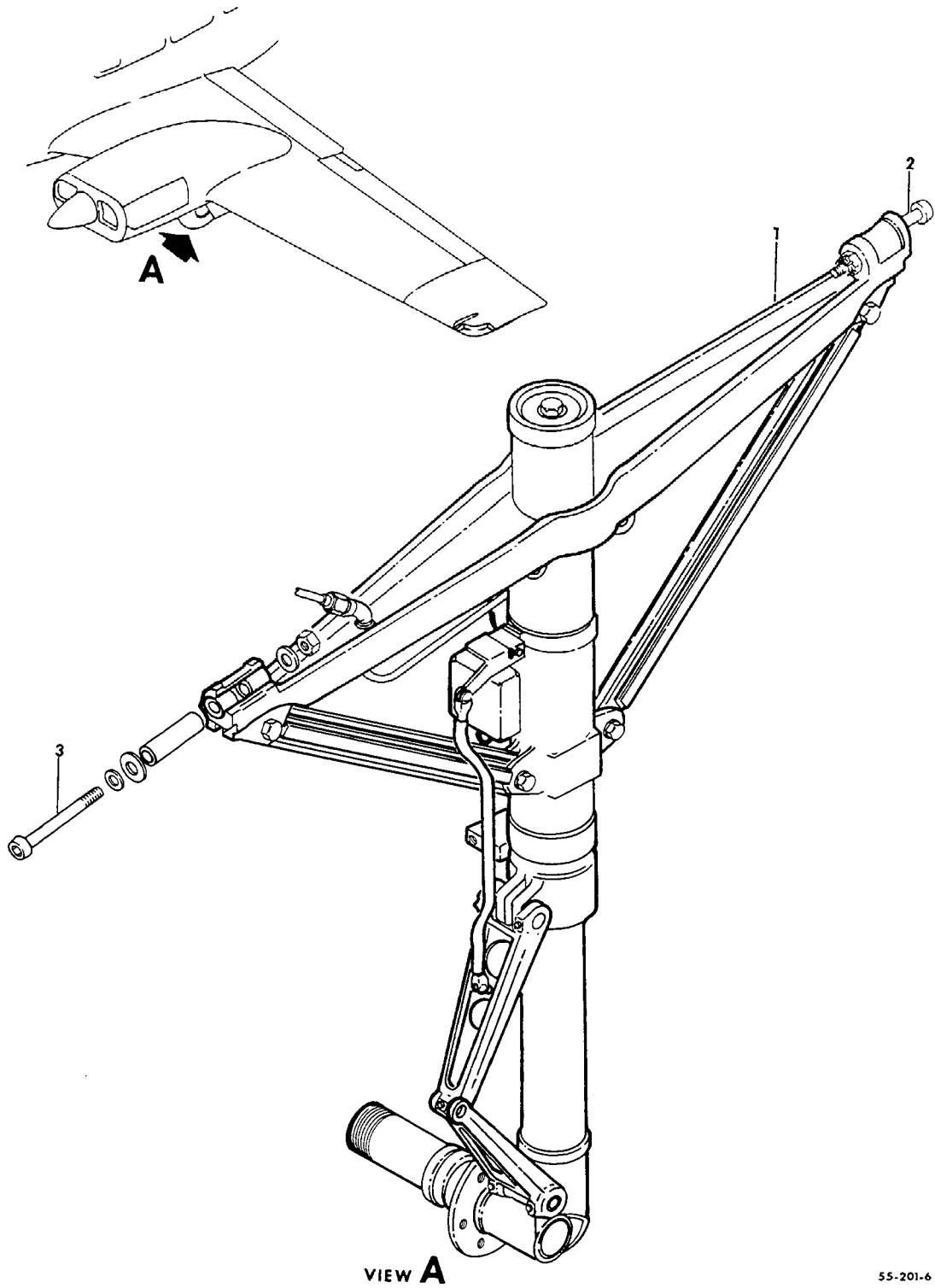


BEECHCRAFT
BARON SERIALS TC-1 THRU TC-1607, TE-1 THRU TE-937, TE-939 THRU TE-942
ILLUSTRATED PARTS CATALOG



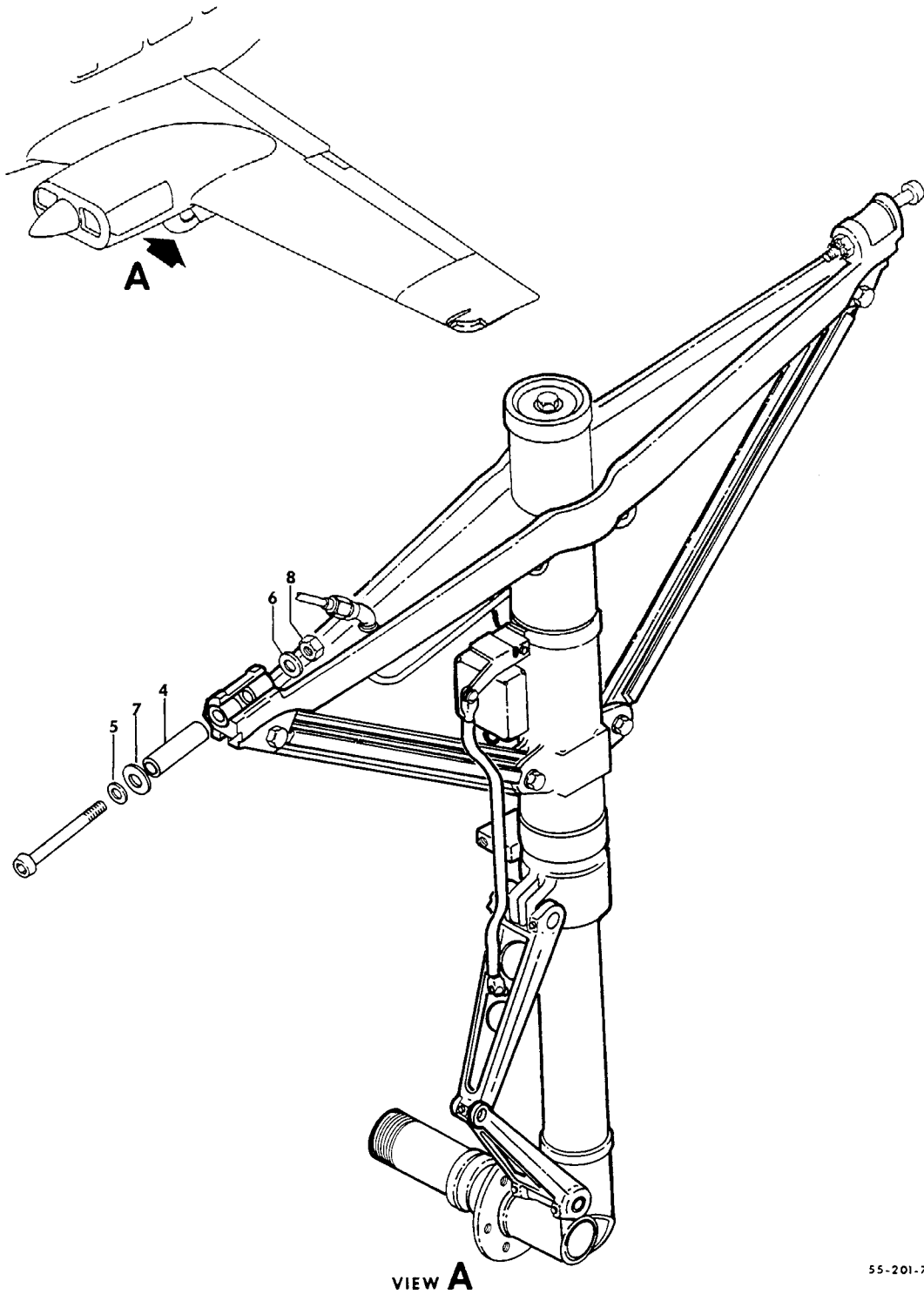
VIEW A

55-201-6

B E E C H C R A F T
 BARON SERIALS TC-1 THRU TC-1607, TE-1 THRU TE-937, TE-939 THRU TE-942
 I L L U S T R A T E D P A R T S C A T A L O G

ATA CODE & INDEX NO.	PART NO.	DESCRIPTION	1 2 3 4 5 6 7							UNITS PER ASSY	USABLE ON CODE
			1	2	3	4	5	6	7		
10-01	95-810002-7	GEAR INSTL,LH MAIN LANDING/STANDARD/.	NP	1
	95-810002-7	GEAR INSTL,LH MAIN LANDING/OPTIONAL/.	NP	2
	95-810002-25	GEAR INSTL,LH MAIN LANDING.	NP	2
	95-810002-31	GEAR INSTL,LH MAIN LANDING.	NP	3
	95-810002-35	GEAR INSTL,LH MAIN LANDING.	NP	4
	95-810002-8	GEAR INSTL,RH MAIN LANDING/STANDARD/.	NP	1
	95-810002-8	GEAR INSTL,RH MAIN LANDING/OPTIONAL/.	NP	2
	95-810002-26	GEAR INSTL,RH MAIN LANDING.	NP	2
	95-810002-32	GEAR INSTL,RH MAIN LANDING.	NP	3
	95-810002-36	GEAR INSTL,RH MAIN LANDING.	NP	4
NOTE FOR BREAKDOWN OF MAIN LANDING GEAR ASSY . SEE CHAPTERS 32-10-10 AND 32-10-20											
- 1	35-815196-605	• GEAR ASSY,LH MAIN LANDING	1	5
	35-815196-616	• GEAR ASSY,LH MAIN LANDING	1	6
	35-815196-691	• GEAR ASSY,LH MAIN LANDING	1	7
	95-810002-601	• GEAR ASSY,LH MAIN LANDING	1	8
	95-810002-603	• GEAR ASSY,LH MAIN LANDING	1	9
	95-810002-607	• GEAR ASSY,LH MAIN LANDING	1	10
	95-810002-617	• GEAR ASSY,LH MAIN LANDING	1	11
	95-810002-613	• GEAR ASSY,LH MAIN LANDING	1	12
	95-810002-619	• GEAR ASSY,LH MAIN LANDING	1	13
	95-810002-693	• GEAR ASSY,LH MAIN LANDING	1	8
	95-810002-651	• GEAR ASSY,LH MAIN LANDING	1	14
	95-810002-755	• GEAR ASSY,LH MAIN LANDING	1	15
	35-815196-606	• GEAR ASSY,RH MAIN LANDING	1	5
	35-815196-617	• GEAR ASSY,RH MAIN LANDING	1	6
	35-815196-692	• GEAR ASSY,RH MAIN LANDING	1	7
	95-810002-602	• GEAR ASSY,RH MAIN LANDING	1	8
	95-810002-604	• GEAR ASSY,RH MAIN LANDING	1	9
	95-810002-608	• GEAR ASSY,RH MAIN LANDING	1	10
	95-810002-618	• GEAR ASSY,RH MAIN LANDING	1	11
	95-810002-614	• GEAR ASSY,RH MAIN LANDING	1	12
	95-810002-620	• GEAR ASSY,RH MAIN LANDING	1	13
	95-810002-694	• GEAR ASSY,RH MAIN LANDING	1	8
	95-810002-652	• GEAR ASSY,RH MAIN LANDING	1	14
	95-810002-756	• GEAR ASSY,RH MAIN LANDING	1	15
		/ATTACHING PARTS/									
- 2	NAS148A50	• BOLT,AFT.	1	7
	NAS148A67/H/	• BOLT,AFT.	1	16
- 3	NAS148A52	• BOLT,FWD.	1	7
	NAS148A69/H/	• BOLT,FWD.	1	16

BEECHCRAFT
BARON SERIALS TC-1 THRU TC-1607, TE-1 THRU TE-937, TE-939 THRU TE-942
ILLUSTRATED PARTS CATALOG



55-201-7

B E E C H C R A F T
 BARON SERIALS TC-1 THRU TC-1607, TE-1 THRU TE-937, TE-939 THRU TE-942
 I L L U S T R A T E D P A R T S C A T A L O G

ATA CODE & INDEX NO.	PART NO.	DESCRIPTION							UNITS PER ASSY	USABLE ON CODE
		1	2	3	4	5	6	7		
/ATTACHING PARTS/										
10-01 - 4	35-815182	2	7
	35-815250	2	16
- 5	NAS143-8C	2	
- 6	100951X063XD	2	7
	AN960-816	2	16
- 7	100951S016XF	2	
		2	
	100951S032XF	2	
		2	
- 8	AN310-8	2	
	AN380-3-3	2	

CODES OF EFFECTIVITY

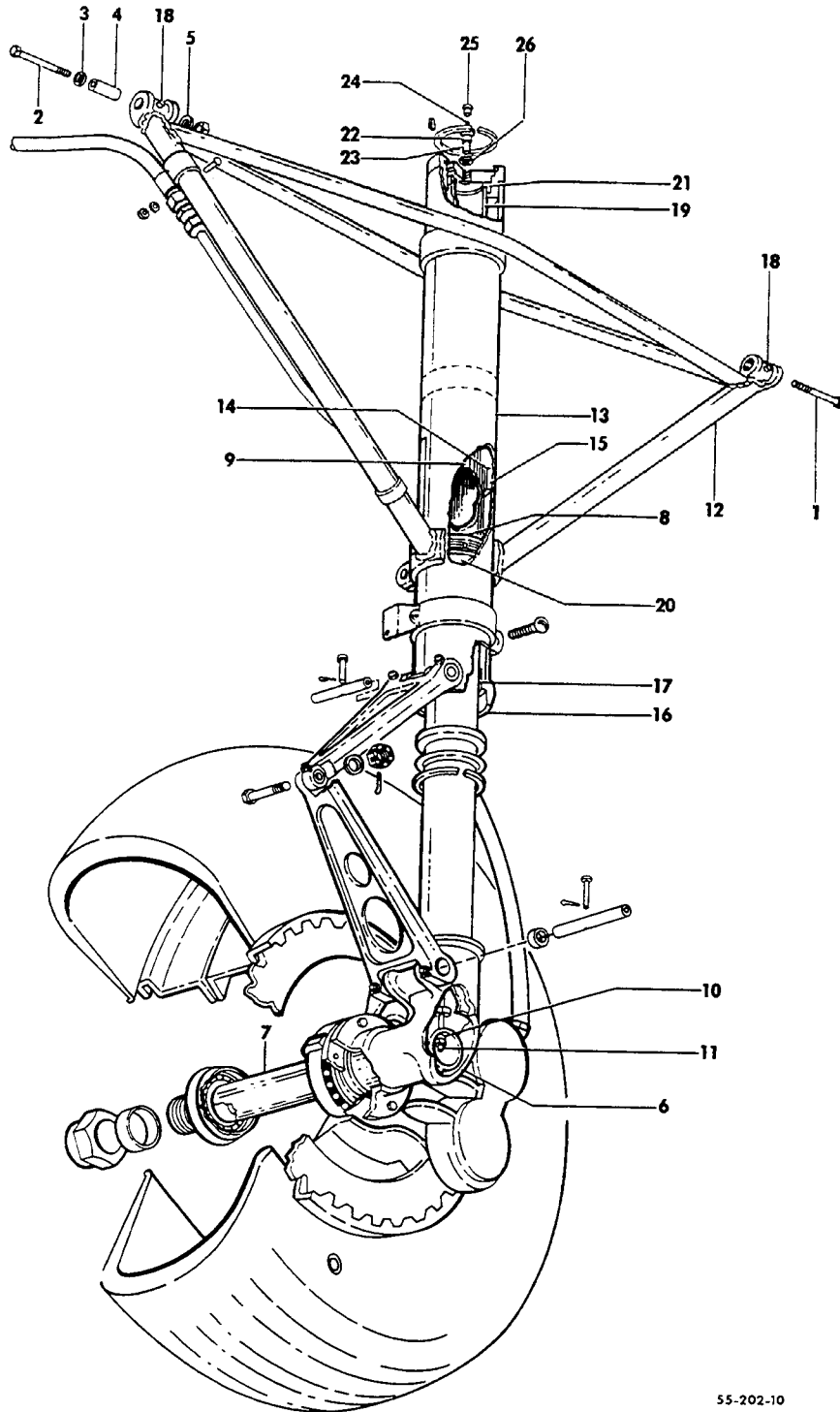
1	TC-1 THRU TC-849 EXCEPT TC-350	2	TC-1002 AND TC-850 THRU TC-998 EXCEPT TC-663,TC-979 AND TC-984
3	TC-663,TC-979,TC-984 TC-999 THRU TC-1607 EXCEPT TC-1002	4	TC-350 AND TE-1 THRU TE-942 EXCEPT TE-938
5	TC-1 THRU TC-99	6	TC-100 THRU TC-354 EXCEPT TC-251,TC-344
7	TC-1 THRU TC-354 EXCEPT TC-251,TC-344	8	TC-251,TC-344 AND TC-355 THRU TC-422
9	TC-423 THRU TC-849	10	TC-850 THRU TC-1010
11	TC-1011 THRU TC-1607 TE-1 THRU TE-167	12	TC-1289 THRU TC-1607 TE-1 THRU TE-167
13	TE-168 THRU TE-942 EXCEPT TE-938	14	TC-423 THRU TC-1010
15	TC-1011 THRU TC-1607	16	TC-251,TC-344 AND TC-355 THRU TC-1607 TE-1 THRU TE-942 EXCEPT TE-938

END

B E E C H C R A F T
BARON SERIALS TC-1 THRU TC-1607, TE-1 THRU TE-937, TE-939 THRU TE-942
I L L U S T R A T E D P A R T S C A T A L O G

32-10-10
MAIN LANDING GEAR ASSEMBLY
TC-1 THRU TC-354 EXCEPT TC-251 & TC-344

BEECHCRAFT
BARON SERIALS TC-1 THRU TC-1607, TE-1 THRU TE-937, TE-939 THRU TE-942
ILLUSTRATED PARTS CATALOG



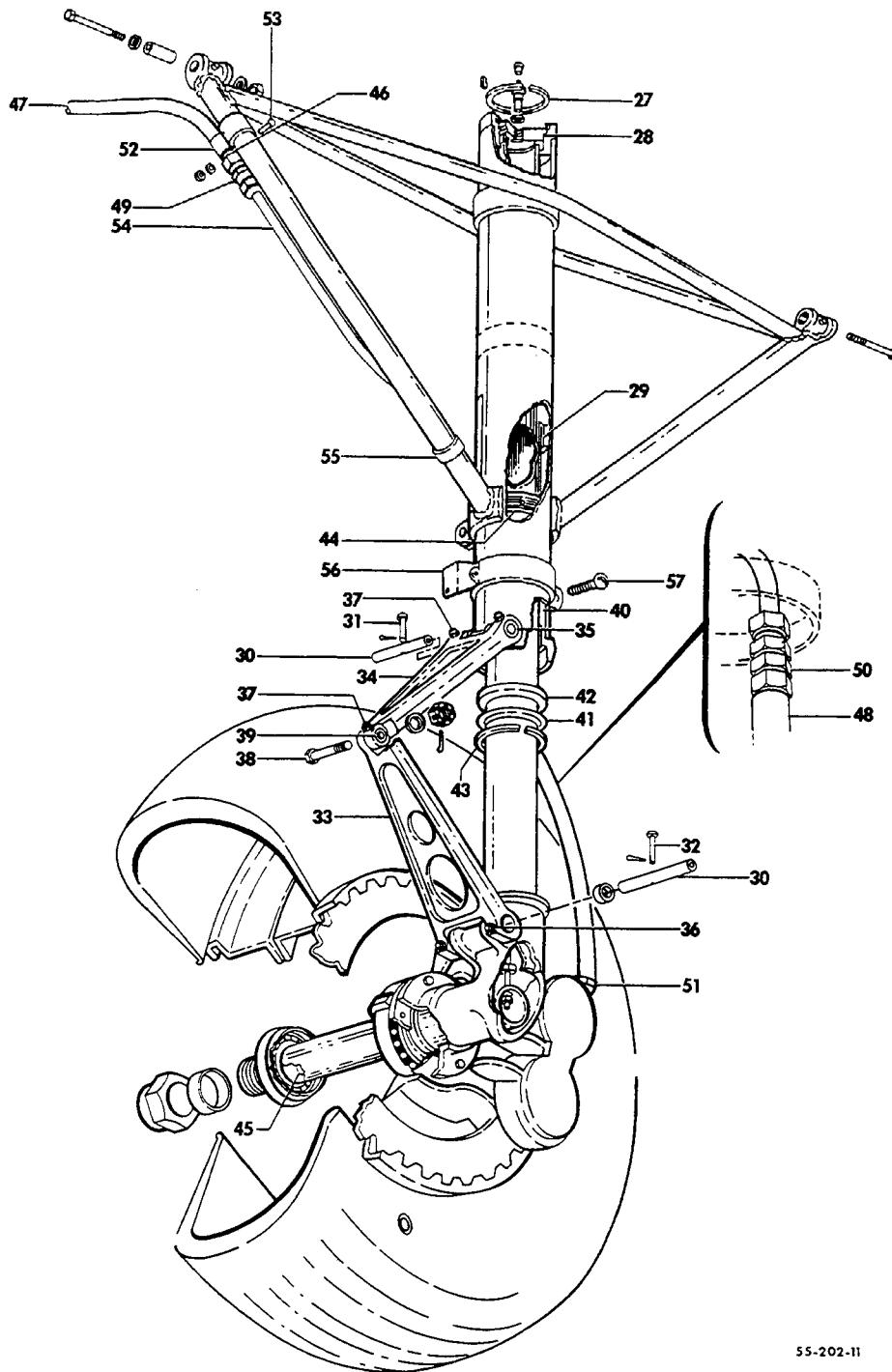
55-202-10

B E E C H C R A F T
B A R O N 5 5
I L L U S T R A T E D P A R T S C A T A L O G

SUB-SECT UNIT & ITEM NO.	PART NO.	DESCRIPTION	UNITS PER ASSY	USABLE ON CODE
		1 2 3 4 5 6 7		
10-10	35-815196-605	GEAR ASSY,LH MAIN LANDING/COMPLETE/	1	1
	35-815196-616	GEAR ASSY,LH MAIN LANDING/COMPLETE/	1	2
	35-815196-691	GEAR ASSY,LH MAIN LANDING	1	3
		/LESS TIRE,WHEEL & BRAKE/		
	35-815196-606	GEAR ASSY,RH MAIN LANDING/COMPLETE/	1	1
	35-815196-617	GEAR ASSY,RH MAIN LANDING/COMPLETE/	1	2
	35-815196-692	GEAR ASSY,RH MAIN LANDING	1	3
		/LESS TIRE,WHEEL & BRAKE/		
		/ATTACHING PARTS/		
- 1	NAS148A50	BOLT,AFT.	1	
- 2	NAS148A52	BOLT,FWD.	1	
- 3	R NAS143-8C	WASHER.	2	
- 4	35-815182	BUSHING	2	
- 5	100951X063XD	WASHER.	2	
	AN310-8	NUT	2	
	AN380-3-3	PIN,COTTER.	2	

	35-815192-5	. SHOCK ASSY,LOWER LH	1	3
	35-815192-6	. SHOCK ASSY,LOWER RH	1	3
	35-815192-25	. . SOCKET ASSY,AXLE LH	1	3
	35-815192-26	. . SOCKET ASSY,AXLE RH	1	3
- 6	35-815197-1	. . . SOCKET,LH AXLE.	1	3
	35-815197-2	. . . SOCKET,RH AXLE.	1	3
- 7	35-815022	. . . AXLE.	1	3
	35-815192-27	. . PISTON ASSY,LOWER SHOCK	1	3
- 8	35-815192-11	. . . PLUG.	1	3
- 9	35-815192-15	. . . TUBE.	1	3
	AN5-11	. . . BOLT.	1	3
- 10	35-815081	. . . WASHER.	1	3
- 11	AN365-524	. . . NUT	1	3
	35-815192-3	. SHOCK ASSY,UPPER LH	1	3
	35-815192-4	. SHOCK ASSY,UPPER RH	1	3
- 12	95-810010-7	. . TRUSS ASSY,LH	1	3
	95-810010-8	. . TRUSS ASSY,RH	1	3
	35-815192-601	. . BARREL ASSY,UPPER SHOCK	1	3
- 13	35-815192-23	. . . TUBE,UPPER SHOCK.	1	3
	45-815215	. . . BEARING ASSY,UPPER SHOCK BARREL	1	3
- 14	45-815215-2 TUBE.	1	3
- 15	45-815215-4 BUSHING,UNDIVIDED	1	3
- 16	45-815230	. . . FITTING,BEARING	1	3
- 17	45-815231	. . . BEARING,PISTON.	1	3
- 18	MS15002-3	. . . FITTING,ZERK.	2	3
	35-815192-41	. . TUBE ASSY,ORIFICE	1	3
- 19	35-815192-17	. . . TUBE,ORIFICE.	1	3
- 20	35-815192-37	. . . HEAD,ORIFICE.	1	3
- 21	35-815192-21	. . . CAP,ORIFICE	1	3
	35-815088-18	. . BODY ASSY,AIR VALVE	1	4
	118642-3	. . BODY ASSY,AIR VALVE	1	5
- 22	35-815088-4	. . . BODY,AIR VALVE.	1	4
- 23	35-815088-16	. . . TUBE,AIR VALVE.	1	4
- 24	302D	. . CORE/SUPERSEDES AN809-1/.	1	3
- 25	AN813-1A	. . . CAP	1	4
	MS20813-1	. . . CAP	1	5
- 26	AN6290-5	. . . GASKET.	1	4
	MS28778-5	. . . GASKET.	1	5

BEECHCRAFT
BARON SERIALS TC-1 THRU TC-1607, TE-1 THRU TE-937, TE-939 THRU TE-942
ILLUSTRATED PARTS CATALOG



55-202-11

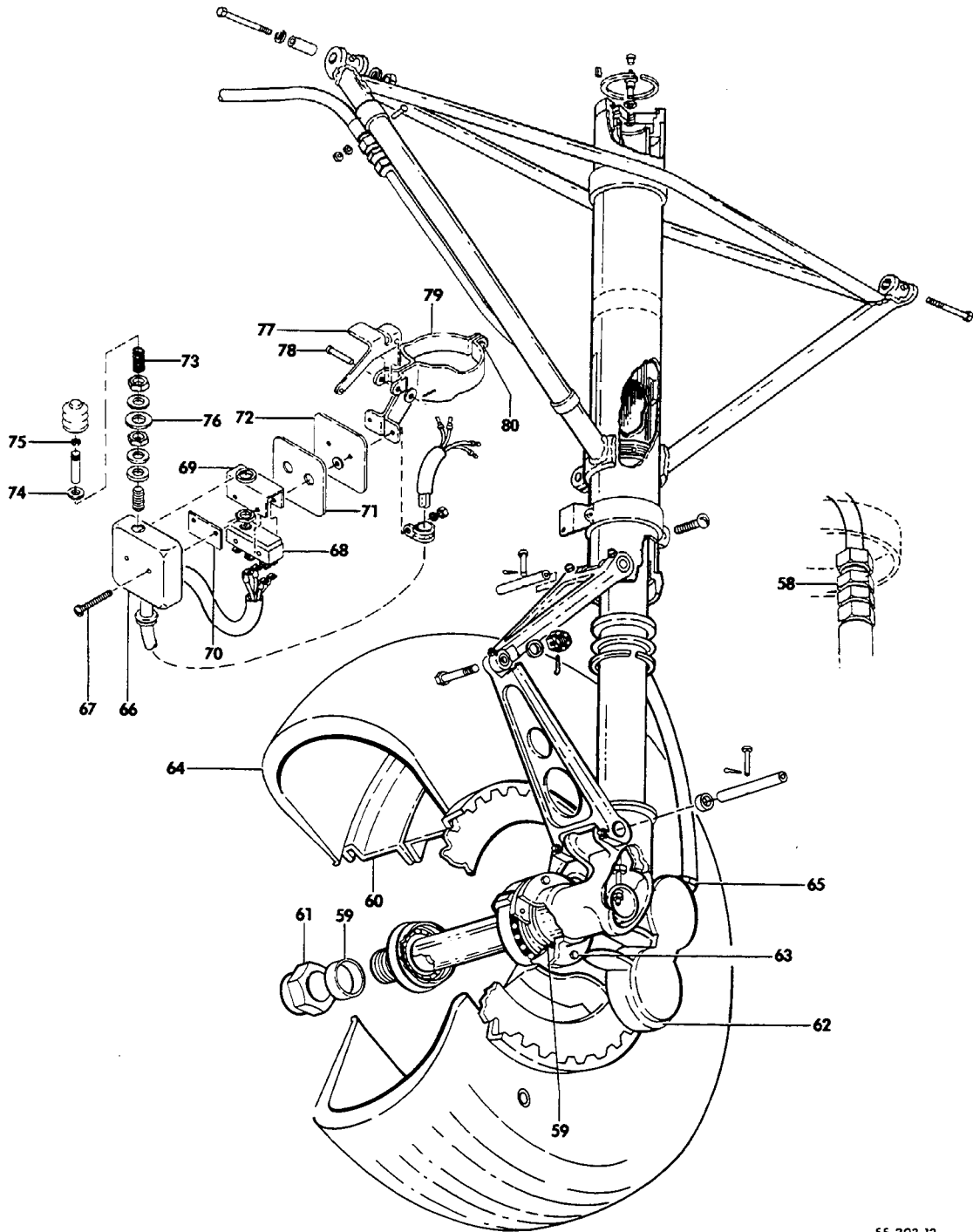
B E E C H C R A F T
 BARON SERIALS TC-1 THRU TC-1607, TE-1 THRU TE-937, TE-939 THRU TE-942
 I L L U S T R A T E D P A R T S C A T A L O G

ATA CODE & INDEX NO.	PART NO.	DESCRIPTION							UNITS PER ASSY	USABLE ON CODE	
		1	2	3	4	5	6	7			
10-10 - 27	NA50-262	•	R	•	•	•	•	•	•	1	3
- 28	AN6230-7	•	G	•	•	•	•	•	•	1	3
- 29	AN6227-31	•	P	•	•	•	•	•	•	1	3
	35-815194	•	K	•	•	•	•	•	•	1	3
	45-815011-6	•	K	•	•	•	•	•	•	1	3
			/ATTACHING PARTS/								
- 30	45-815237	•	P	•	•	•	•	•	•	2	
- 31	AN392-27	•	P	•	•	•	•	•	•	1	
- 32	AN392-23	•	P	•	•	•	•	•	•	1	

	AN380-2-1	•	P	•	•	•	•	•	•	2	
- 33	35-815194-1	•	K	•	•	•	•	•	•	1	3
- 34	45-815011-4	•	K	•	•	•	•	•	•	1	6
	45-815011-8	•	K	•	•	•	•	•	•	1	7
- 35	45-815013	•	B	•	•	•	•	•	•	2	3
- 36	MS15002-1	•	F	•	•	•	•	•	•	2	3
- 37	1729	•	F	•	•	•	•	•	•	3	3
- 38	AN5-13	•	B	•	•	•	•	•	•	1	3
- 39	1057395-YK0431	•	B	•	•	•	•	•	•	1	3
	AN960-516	•	W	•	•	•	•	•	•	1	3
	AN310-5	•	N	•	•	•	•	•	•	1	3
	AN380-2-3	•	P	•	•	•	•	•	•	1	3
- 40	35-810150-2	•	F	•	•	•	•	•	•	1	3
- 41	MS28776-20	•	S	•	•	•	•	•	•	1	3
- 42	45-815232	•	A	•	•	•	•	•	•	1	3
- 43	111200-6	•	R	•	•	•	•	•	•	1	3
- 44	35-380020-1	•	R	•	•	•	•	•	•	1	3
- 45	16XXXX	•	C	•	•	•	•	•	•	1	3
- 46	35-815001-8	•	S	•	•	•	•	•	•	1	3
- 47	MS28741-4-0125	•	H	•	•	•	•	•	•	1	3
- 48	MS28741-4-0153	•	H	•	•	•	•	•	•	1	3
- 49	AN815-4D	•	U	•	•	•	•	•	•	1	3
- 50	AN919-6D	•	U	•	•	•	•	•	•	1	3
- 51	AN6290-6	•	G	•	•	•	•	•	•	1	3
- 52	35-815038	•	C	•	•	•	•	•	•	1	3
			/ATTACHING PARTS/								
- 53	AN4-7	•	B	•	•	•	•	•	•	1	
	AN960-416	•	W	•	•	•	•	•	•	1	
	AN365-428	•	N	•	•	•	•	•	•	1	

- 54	35-815043	•	T	•	•	•	•	•	•	1	3
	35-815044	•	T	•	•	•	•	•	•	1	3
- 55	MS21919-6	•	C	•	•	•	•	•	•	1	3
	AN742-15	•	C	•	•	•	•	•	•	1	4
	AN742-14	•	C	•	•	•	•	•	•	1	5
	AN3-4A	•	B	•	•	•	•	•	•	1	3
	AN960-10	•	W	•	•	•	•	•	•	1	3
	AN365-1032	•	N	•	•	•	•	•	•	1	3
- 56	35-815004	•	C	•	•	•	•	•	•	1	3
	35-815004-1	•	C	•	•	•	•	•	•	1	3
			/ATTACHING PARTS/								
- 57	AN4-10A	•	B	•	•	•	•	•	•	1	
	AN960-416	•	W	•	•	•	•	•	•	1	
	AN365-428	•	N	•	•	•	•	•	•	1	

BEECHCRAFT
BARON SERIALS TC-1 THRU TC-1607, TE-1 THRU TE-937, TE-939 THRU TE-942
ILLUSTRATED PARTS CATALOG

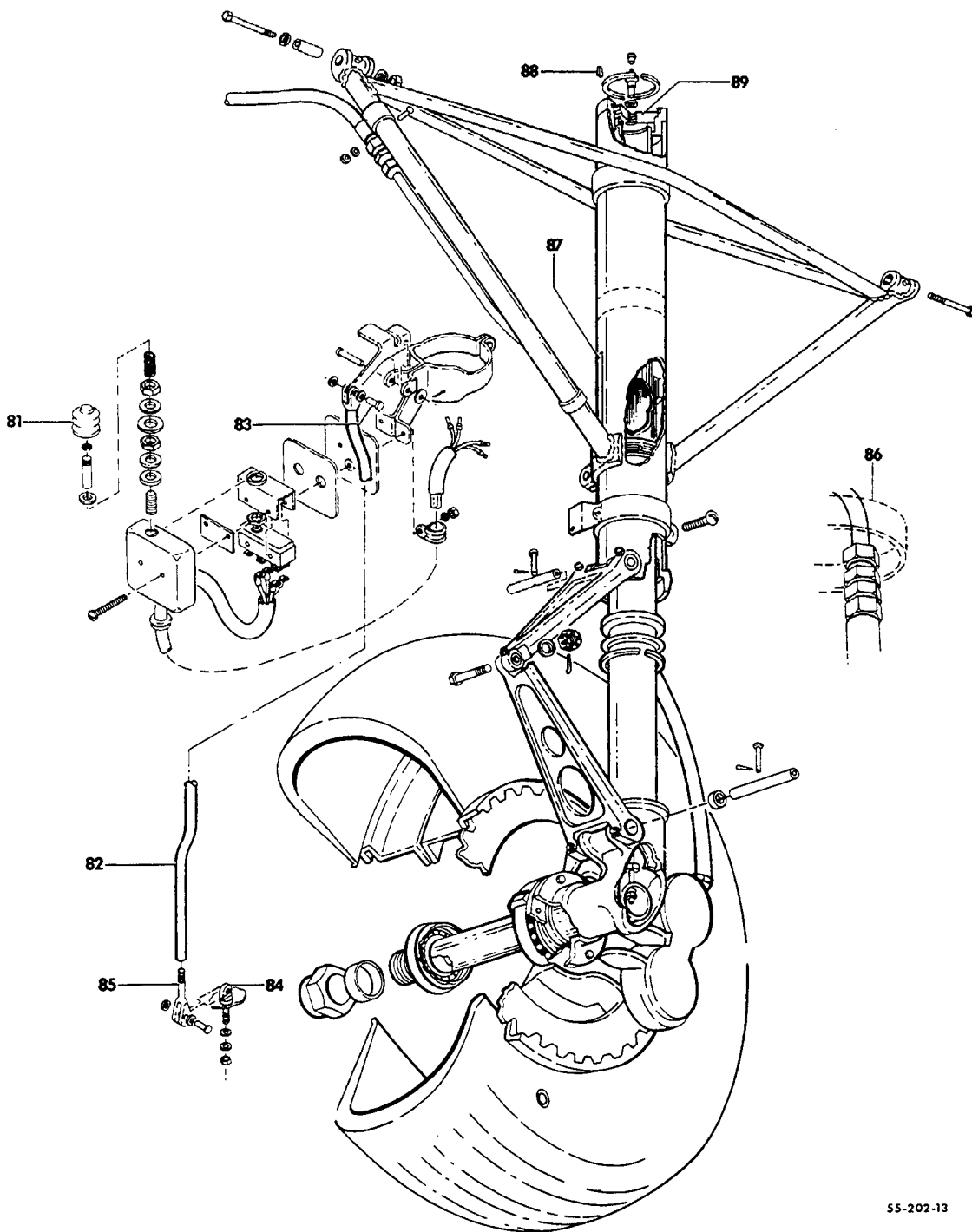


55-202-12

B E E C H C R A F T
 BARON SERIALS TC-1 THRU TC-1607, TE-1 THRU TE-937, TE-939 THRU TE-942
 I L L U S T R A T E D P A R T S C A T A L O G

ATA CODE & INDEX NO.	PART NO.	1 2 3 4 5 6 7	DESCRIPTION	UNITS PER ASSY	USABLE ON CODE
10-10 - 58	AN832-4D	UNION	1	3
	AN960-716	WASHER	1	3
	AN924-4	NUT	1	3
	AN6290-6	GASKET	1	3
- 59	35-815023	BUSHING,WHEEL SPACER.	2	3
	35-815196-15	WHEEL ASSY,BALANCED	1	1
	35-815196-25	WHEEL ASSY,BALANCED	1	2
- 60	96-300001-3	WHEEL ASSY,MAIN GEAR/SEE CHAPTER 32-40-01/. /ATTACHING PARTS/	1	3
- 61	AN7502-24	NUT	1	
	AN380-4-8	PIN,COTTER.	1	
- 62	95-32412	BRAKE ASSY,MAIN GEAR/SEE CHAPTER 32-40-20/.	1	1
	95-32679	BRAKE ASSY,MAIN GEAR/SEE CHAPTER 32-40-20/.	1	2
	96-300001-5	BRAKE ASSY,NEW MAIN GEAR/SEE CHAPTER. 32-40-21/	1	3
	105739X-XZ0355	BUSHING/USE TO CONVERT FROM 95-32412 AND. 95-32679 TO 96-300001-5 BRAKE ASSY/ /ATTACHING PARTS/	1	3
- 63	AN4-10A	BOLT	6	
	AN960-416	WASHER.	6	
	AN365-428	NUT	6	
- 64	6.50 X 8 6P TL	TIRE,6 PLY TUBELESS	1	3
- 65	AN919-6D	UNION	1	3
	95-361014	SWITCH ASSY,LANDING GEAR SAFETY	1	3
- 66	35-361135-1	BOX,SAFETY SWITCH	1	3
			/ATTACHING PARTS/		
- 67	AN526-632-22	SCREW	2	
	AN960D6	WASHER.	4	
	AN365-632	NUT	2	
- 68	MS25026-1	SWITCH/SUPERSEDES AN3210-1/	1	3
- 69	MC2711	ACTUATOR.	1	3
- 70	45-364238	INSULATOR,SWITCH.	1	3
- 71	35-361136	GASKET	1	3
- 72	35-361134	COVER	1	3
	AN960A816L	WASHER.	2	3
- 73	35-361150	SPRING,PLUNGER.	1	3
- 74	100951DD032YF	WASHER.	1	3
- 75	NAS51-31	RING,SNAP	1	3
- 76	35-361153	WASHER,SWITCH ACTUATOR.	1	3
- 77	35-361132-1	ARM,SWITCH.	1	3
			/ATTACHING PARTS/		
- 78	AN393-29	PIN	1	
	AN380-2-1	PIN,COTTER.	1	
- 79	35-361133	BRACKET ASSY,LANDING GEAR SAFETY SWITCH /ATTACHING PARTS/	1	3
- 80	AN3-5A	BOLT	1	
	AN960D10	WASHER.	1	
	AN365-1032	NUT	1	

BEECHCRAFT
BARON SERIALS TC-1 THRU TC-1607, TE-1 THRU TE-937, TE-939 THRU TE-942
ILLUSTRATED PARTS CATALOG



55-202-13

B E E C H C R A F T
 BARON SERIALS TC-1 THRU TC-1607, TE-1 THRU TE-937, TE-939 THRU TE-942
 I L L U S T R A T E D P A R T S C A T A L O G

ATA CODE & INDEX NO.	PART NO.	DESCRIPTION							UNITS PER ASSY	USABLE ON CODE	
		1	2	3	4	5	6	7			
10-10	35-361133-2	BRACKET	.	.	.	1	3
	35-361133-3	BRACKET	.	.	.	1	3
	AN931-3-10	GROMMET	.	.	.	1	3
	AN742-6C	CLAMP	.	.	.	1	3
- 81	35-361148-1	BOOT	.	.	.	1	3
- 82	35-361145	LINK ASSY,SAFETY SWITCH	.	.	.	1	3
						/ATTACHING PARTS/					
- 83	AN393-13	PIN	.	.	.	2	
	AN960D10	WASHER	.	.	.	4	
	AN380-2-1	PIN,COTTER	.	.	.	2	
- 84	AN42-4	BOLT,EYE	.	.	.	1	3
- 85	AN161-16RS	FORK	.	.	.	1	3
	MS21919DG8	CLAMP/RH ONLY/	.	.	.	4	3
- 86	35-815264-1	CLAMP,LH BRAKE LINE	.	.	.	1	3
	35-815264-2	CLAMP,RH BRAKE LINE	.	.	.	1	3
- 87	96-810010	PLATE,LH MAIN LANDING GEAR SHOCK INSTRUCTIONS	.	.	.	1	3
	96-810011	PLATE,RH MAIN LANDING GEAR SHOCK INSTRUCTIONS	.	.	.	1	3
- 88	45-815225	LOCK,MAIN LANDING GEAR BARREL END	.	.	.	2	3
- 89	45-815224	PLUG,MAIN LANDING GEAR BARREL END	.	.	.	2	3

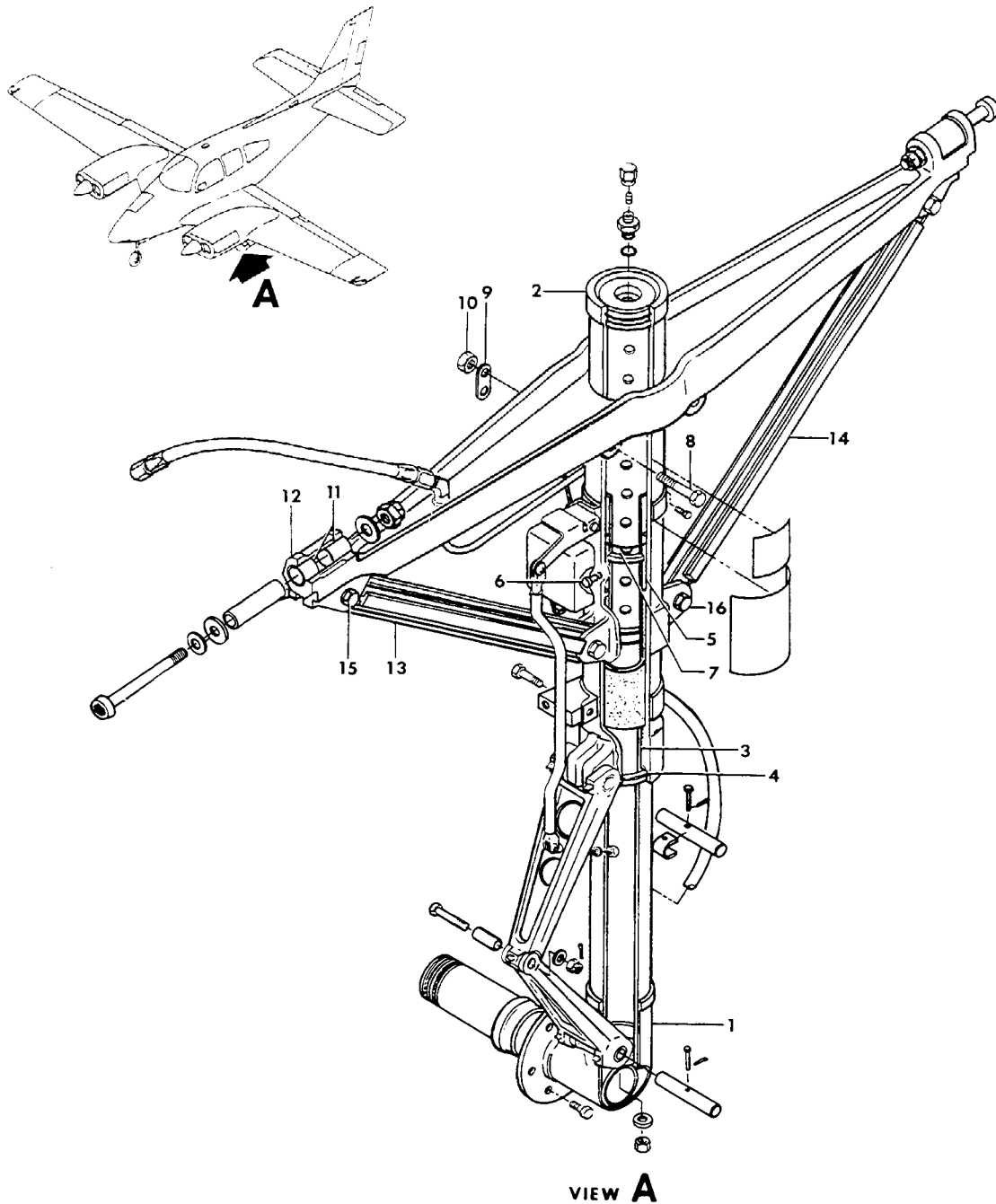
CODES OF EFFECTIVITY

- | | |
|---|---|
| 1 TC-1 THRU TC-99 | 2 TC-100 THRU TC-354
EXCEPT TC-251 &
TC-344 |
| 3 TC-1 THRU TC-354
EXCEPT TC-251 &
TC-344 | 4 TC-1 THRU TC-200 |
| 5 TC-201 THRU TC-354
EXCEPT TC-251 &
TC-344 | 6 TC-1 THRU TC-339 |
| 7 TC-340 THRU TC-354 | |

B E E C H C R A F T
BARON SERIALS TC-1 THRU TC-1607, TE-1 THRU TE-937, TE-939 THRU TE-942
I L L U S T R A T E D P A R T S C A T A L O G

32-10-20
MAIN LANDING GEAR ASSEMBLY
TC-251, TC-344, TC-355 THRU TC-1607
TE-1 THRU TE-942 EXCEPT TE-938

BEECHCRAFT
BARON SERIALS TC-1 THRU TC-1607, TE-1 THRU TE-937, TE-939 THRU TE-942
ILLUSTRATED PARTS CATALOG



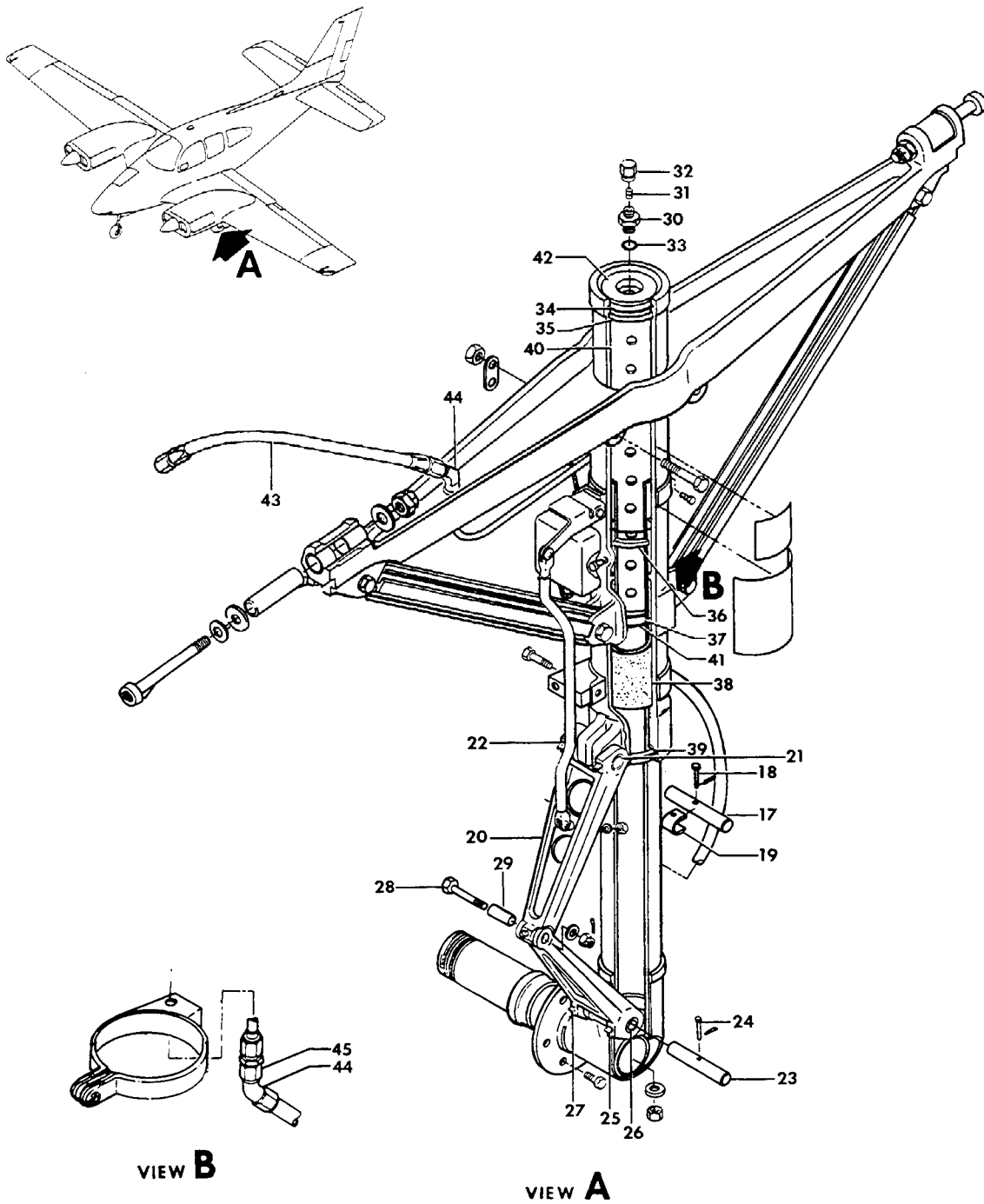
VIEW A

55-202-15

B E E C H C R A F T
 BARON SERIALS TC-1 THRU TC-1607, TE-1 THRU TE-937, TE-939 THRU TE-942
 I L L U S T R A T E D P A R T S C A T A L O G

ATA CODE & INDEX ND.	PART NO.	1 2 3 4 5 6 7	DESCRIPTION	UNITS PER ASSY	USABLE ON CODE
10-20	95-810002-601		GEAR ASSY,LH MAIN LANDING/COMPLETE/	1	1
	95-810002-603		GEAR ASSY,LH MAIN LANDING/COMPLETE/	1	2
	95-810002-607		GEAR ASSY,LH MAIN LANDING/COMPLETE/	1	3
	95-810002-617		GEAR ASSY,LH MAIN LANDING/COMPLETE/	1	4
	95-810002-613		GEAR ASSY,LH MAIN LANDING/COMPLETE/	1	5
	95-810002-619		GEAR ASSY,LH MAIN LANDING/COMPLETE/	1	6
	95-810002-693		GEAR ASSY,LH MAIN LANDING /LESS TIRE,WHEEL & BRAKE/	1	1
	95-810002-651		GEAR ASSY,LH MAIN LANDING /LESS TIRE,WHEEL & BRAKE/	1	7
	95-810002-755		GEAR ASSY,LH MAIN LANDING /LESS TIRE,WHEEL & BRAKE/	1	8
	95-810002-602		GEAR ASSY,RH MAIN LANDING/COMPLETE/	1	1
	95-810002-604		GEAR ASSY,RH MAIN LANDING/COMPLETE/	1	2
	95-810002-608		GEAR ASSY,RH MAIN LANDING/COMPLETE/	1	3
	95-810002-618		GEAR ASSY,RH MAIN LANDING/COMPLETE/	1	4
	95-810002-614		GEAR ASSY,RH MAIN LANDING/COMPLETE/	1	5
	95-810002-620		GEAR ASSY,RH MAIN LANDING/COMPLETE/	1	6
	95-810002-694		GEAR ASSY,RH MAIN LANDING /LESS TIRE,WHEEL & BRAKE/	1	1
	95-810002-652		GEAR ASSY,RH MAIN LANDING /LESS TIRE,WHEEL & BRAKE/	1	7
	95-810002-756		GEAR ASSY,RH MAIN LANDING /LESS TIRE,WHEEL & BRAKE/	1	8
	35-815192-5		. SHOCK ASSY,LOWER LH	1	1
- 1	35-815260-1		. SHOCK ASSY,LOWER LH/SUPERSEDES 35-815192-45/.	1	9
	35-815260-3		. SHOCK ASSY,LOWER LH	1	6
	35-815192-6		. SHOCK ASSY,LOWER RH	1	1
	35-815260-2		. SHOCK ASSY,LOWER RH/SUPERSEDES 35-815192-46/.	1	9
	35-815260-4		. SHOCK ASSY,LOWER RH	1	6
	35-815246-5		. CYLINDER ASSY,LH	1	10
	35-815246-7		. CYLINDER ASSY,RH	1	10
- 2	35-815246-1		. . CYLINDER,LH	1	10
	35-815246-3		. . CYLINDER,RH	1	10
- 3	35-815246-9		. . BEARING	1	10
- 4	RRN-237C		. . RING,RETAINING	1	10
- 5	35-815246-11		. . BEARING	1	11
	35-815246-13		. . BEARING	1	12
- 6	SALP-T6-6		. . HUCKBOLT	2	10
	6LC-C6		. . COLLAR,HUCKBOLT	2	10
- 7	MS28775-138		. . O RING	1	10
- 8	NAS334CPA30		. . BOLT	2	10
- 9	35-815256		. . CONNECTOR,BRACE TO CLAMP	2	10
- 10	MS20365-428		. . NUT	2	10
	35-815251-1		. . BRACE ASSY,MAIN LANDING GEAR UPPER	1	10
- 11	100J12		. . BUSHING	4	10
- 12	35-815251-3		. . BRACE	1	10
- 13	35-815252-1		. . COLUMN,FWD	1	10
- 14	35-815252-3		. . COLUMN,AFT	1	10
			/ATTACHING PARTS/		
- 15	NAS464P7LA16/M/		. . BOLT	2	
- 16	35-815247-15		. . BOLT	2	
	AN960D716		. . WASHER	4	
	MS20364-720		. . NUT	4	

BEECHCRAFT
 BARON SERIALS TC-1 THRU TC-1607, TE-1 THRU TE-937, TE-939 THRU TE-942
 ILLUSTRATED PARTS CATALOG

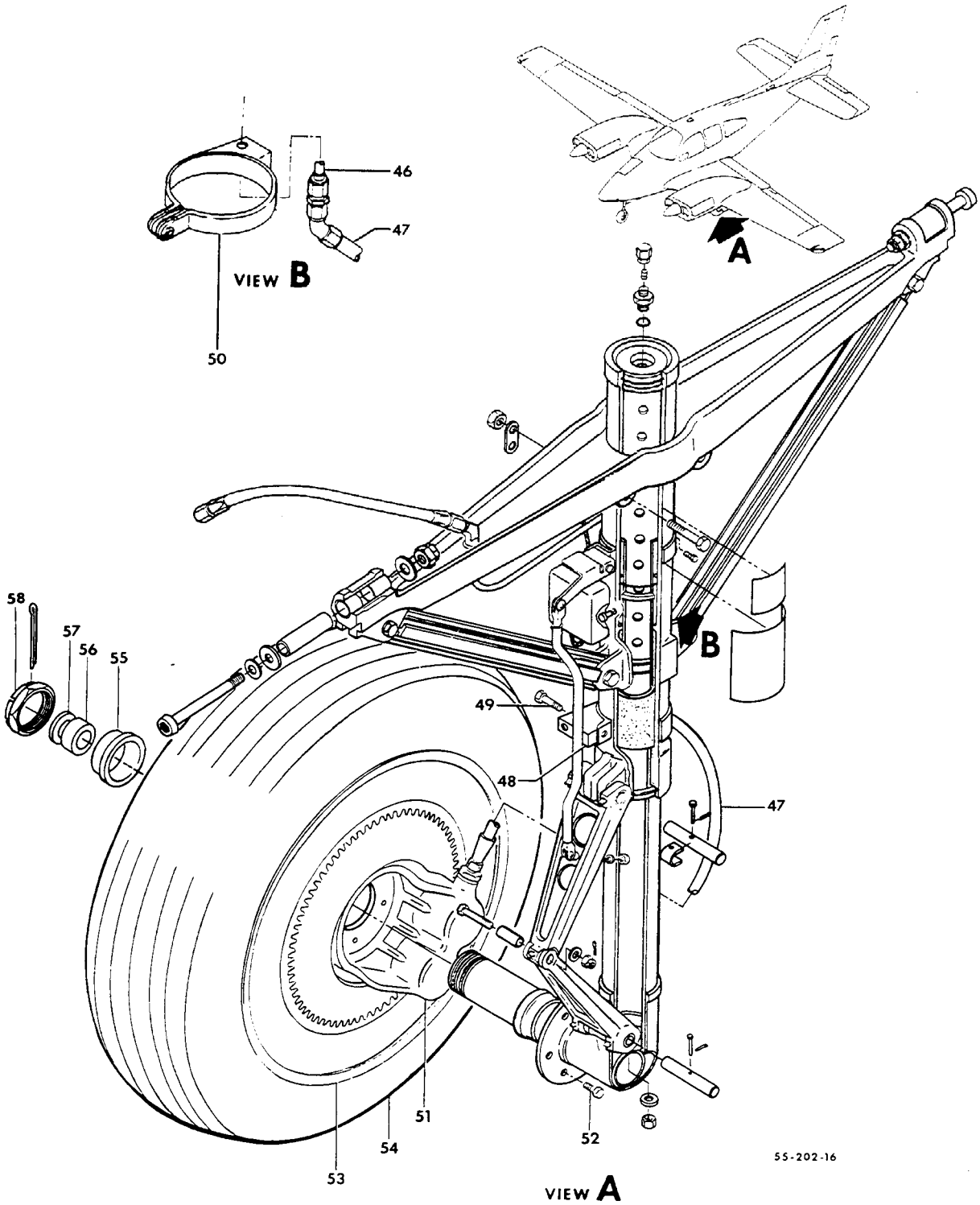


55-202-14

B E E C H C R A F T
 BARON SERIALS TC-1 THRU TC-1607, TE-1 THRU TE-937, TE-939 THRU TE-942
 I L L U S T R A T E D P A R T S C A T A L O G

ATA CODE & INDEX NO.	PART NO.	DESCRIPTION	UNITS PER ASSY	USABLE ON CODE
		1 2 3 4 5 6 7		
10-20	45-815011-10	. KNEE ASSY,UPPER /ATTACHING PARTS/	1	10
- 17	45-815237	. PIN	1	
- 18	MS20392-1-21	. PIN	1	
	MS24665-130	. PIN,COTTER/SUPERSEDES AN380-2-1/.	1	
- 19	35-815253	. STOP.	1	
		↓		
- 20	45-815011-8	. . KNEE,UPPER.	1	10
- 21	45-815013	. . BUSHING	2	10
- 22	1729	. . FITTING,ZERK.	3	10
	35-815194	. KNEE ASSY,LOWER TORQUE.	1	13
	35-815194-3	. KNEE ASSY,LOWER TORQUE.	1	14
	35-815194-9	. KNEE ASSY,LOWER TORQUE/USED WITH.	1	15
		GOODYEAR BRAKES/ CLEVELAND BRAKES/ /ATTACHING PARTS/		
	35-815194-13	. KNEE ASSY,LOWER TORQUE/USED WITH.	1	10
- 23	45-815237	. PIN	1	
- 24	AN392-27	. PIN/SUPERSEDES MS20392-1-27/.	1	
	MS24665-130	. PIN,COTTER/SUPERSEDES AN380-2-1/.	1	
		↓		
- 25	35-815194-1	. . KNEE,LOWER.	1	13
	35-815194-5	. . KNEE,LOWER.	1	14
	35-815194-7	. . KNEE,LOWER.	1	15
	35-815194-11	. . KNEE,LOWER.	1	10
- 26	45-815013	. . BUSHING	2	10
- 27	MS15002-1	. . FITTING,ZERK.	2	10
- 28	AN5-13/M/	. BOLT.	1	10
- 29	105739S-YK0431	. BUSHING	1	10
	AN960-516	. WASHER.	1	10
	AN310-5	. NUT	1	10
	AN380-2-3	. PIN,COTTER.	1	10
- 30	118642-7	. BODY,AIR VALVE.	1	10
- 31	302D	. CORE,AIR VALVE.	1	10
- 32	MS20813-1	. CAP	1	10
- 33	MS28778-5	. GASKET.	1	10
- 34	RRN237C	. RING,RETAINING.	1	10
- 35	AN623085	. GASKET.	1	10
- 36	AN6227831	. PACKING	1	10
- 37	35-380020-1	. RING,PISTON	1	10
- 38	35-815247-9	. FELT.	1	10
- 39	504271	. SEAL,SCRAPER.	1	10
	35-815249-1	. BRAZE ASSY,ORIFICE.	1	16
	35-815249-3	. BRAZE ASSY,ORIFICE.	1	17
- 40	35-815192-17	. . TUBE	1	10
- 41	35-815192-37	. . HEAD,ORIFICE.	1	16
	96-810017	. . HEAD,ORIFICE.	1	17
- 42	35-815245-1	. . CAP	1	10
	111503-1331A	. . RING,LOWER BRAZE.	1	10
	111503-1540A	. . RING,UPPER BRAZE.	1	10
- 43	MS28741-4-0170	. HOSE ASSY,UPPER	1	10
- 44	AN837-4D	. ELBOW	2	10
- 45	AN960D716	. WASHER.	3	10
	AN924-4D	. NUT	2	10

BEECHCRAFT
 BARON SERIALS TC-1 THRU TC-1607, TE-1 THRU TE-937, TE-939 THRU TE-942
 ILLUSTRATED PARTS CATALOG

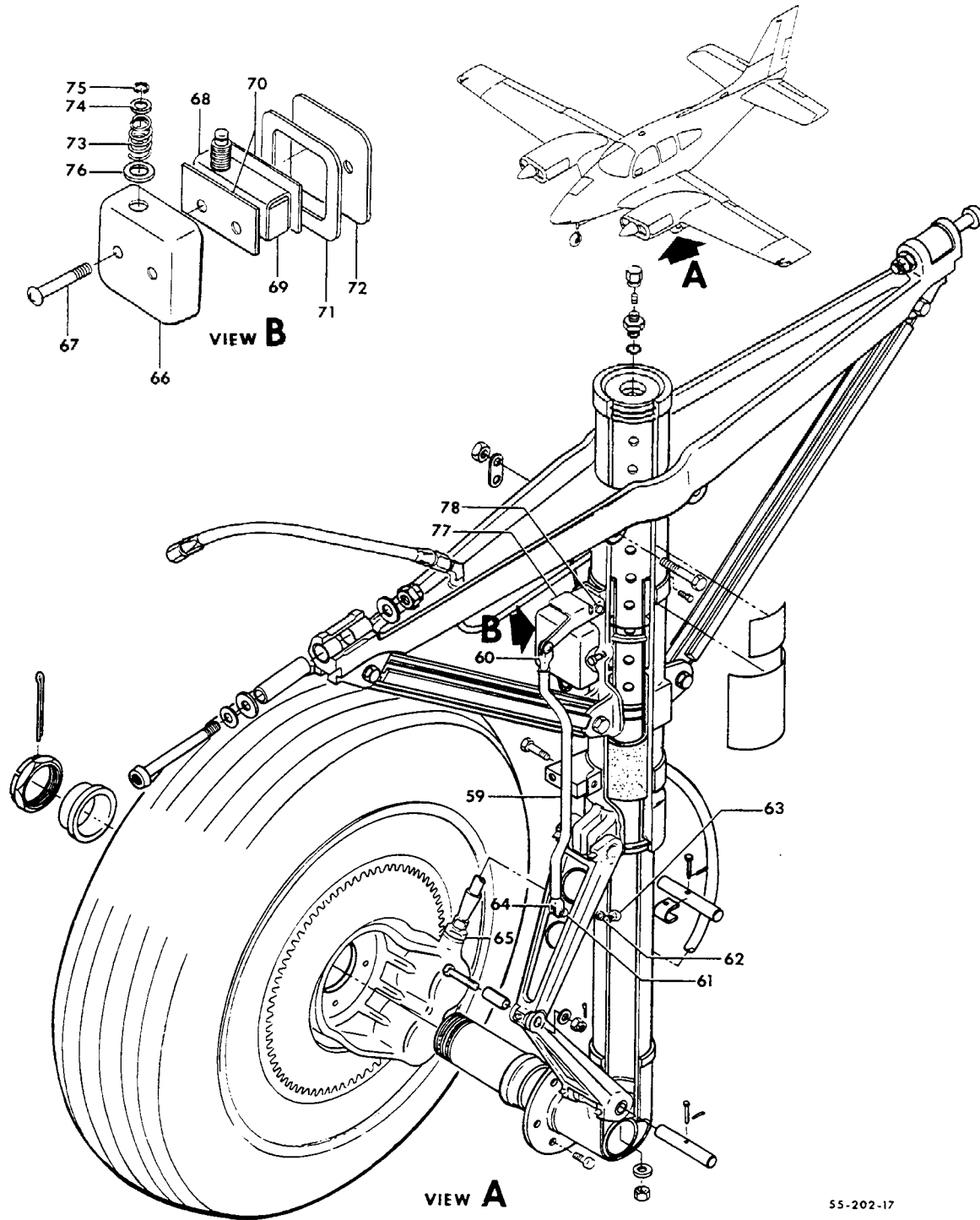


55-202-16

B E E C H C R A F T
 BARON SERIALS TC-1 THRU TC-1607, TE-1 THRU TE-937, TE-939 THRU TE-942
 I L L U S T R A T E D P A R T S C A T A L O G

ATA CODE & INDEX NO.	PART NO.	1 2 3 4 5 6 7	DESCRIPTION	UNITS PER ASSY	USABLE ON CODE
10-20 - 46	95-810002-3	.	TUBE ASSY,LH.	1	16
	95-810002-37	.	TUBE ASSY,LH.	1	17
	95-810002-4	.	TUBE ASSY,RH.	1	16
- 47	95-810002-38	.	TUBE ASSY,RH.	1	17
	MS28741-4-0140	.	HOSE ASSY,LOWER	1	18
- 48	MS28741-4-0160	.	HOSE ASSY,LOWER	1	19
	35-815004	.	CLAMP ASSY,LH LANDING GEAR DOOR ATTACHING	1	10
- 49	35-815004-1	.	CLAMP ASSY,RH LANDING GEAR DOOR ATTACHING	1	10
			/ATTACHING PARTS/		
	AN4-14A/M/ AN960-416 MS20365-428	.	BOLT. WASHER. NUT	1 1 1	
- 50	35-815264-1	.	CLAMP ASSY,LH LOWER BRAKE HOSE ATTACHMENT	1	10
	35-815264-2	.	CLAMP ASSY,RH LOWER BRAKE HOSE ATTACHMENT	1	10
			/ATTACHING PARTS/		
	AN4-14/M/ AN960-416 MS20365-428	.	BOLT. WASHER. NUT	1 1 1	
	35-815196-25	.	WHEEL & TIRE ASSY,BALANCED/SIDEWALL	1	1
	95-810002-17	.	INFLATED TUBELESS TIRE/ WHEEL & BRAKE ASSY/SIDEWALL INFLATED.	1	20
- 51	95-810002-29	.	TUBELESS TIRE/		
	95-810002-33	.	WHEEL & BRAKE ASSY/TUBE TYPE TIRE/.	1	20
	95-32679	.	TIRE,WHEEL & BRAKE ASSY,TUBE TYPE/BALANCED/.	1	21
	96-300001-5 30-66	.	BRAKE ASSY/SEE CHAPTER 32-40-20/. BRAKE ASSY/SEE CHAPTER 32-40-21/. BRAKE ASSY/SEE CHAPTER 32-40-22/.	1 1 1	1 20 21
- 52			/ATTACHING PARTS/		
	AN4-10A/M/ NAS1305-10 AN960-416 AN960-516 MS20365-428 MS20365-524	.	BOLT. BDLT. WASHER. WASHER. NUT NUT	6 5 6 5 6 5	1 22 1 22 1 22
	95-810002-11	.	WHEEL & TIRE ASSY,BALANCED/SIDEWALL	1	23
- 53	95-810002-27	.	INFLATED TUBELESS TIRE/		
	95-810002-39	.	WHEEL & TIRE ASSY,BALANCED/TUBE TYPE TIRE/.	1	23
	96-300001-3	.	WHEEL & TIRE ASSY,BALANCED/TUBE TYPE TIRE/.	1	21
	96-300001-51	.	WHEEL ASSY,SIDEWALL INFLATED TUBELESS	1	23
- 54	40-98	.	TIRE/SUPERSEDES 95-32135, SEE CHAPTER 32-40-01/		
	6.50X8 6P TL 6.50X8 6P TT 6.50X8 8P TT 6.50X8	.	WHEEL ASSY,TUBE TYPE TIRE/SEE CHAPTER 32-40-01/ WHEEL ASSY,TUBE TYPE TIRE/SEE CHAPTER 32-40-02/ TIRE,6 PLY SIDEWALL INFLATED TUBELESS TIRE,6 PLY TUBE TYPE. TIRE,8 PLY TUBE TYPE. TUBE.	1 1 1 1	23 23 21 1
	35-815023 35-815023-1	.	BUSHING/BRAKE SIDE ONLY/. BUSHING/BRAKE SIDE ONLY/.	1 1	18 19
- 56	95-810002-13	.	BUSHING	1	10
- 57	100951X100WL	.	WASHER.	1	10
- 58	AN7502-24 AN380-4-8	.	NUT PIN,COTTER.	1 1	10 10

BEECHCRAFT
 BARON SERIALS TC-1 THRU TC-1607, TE-1 THRU TE-937, TE-939 THRU TE-942
 ILLUSTRATED PARTS CATALOG

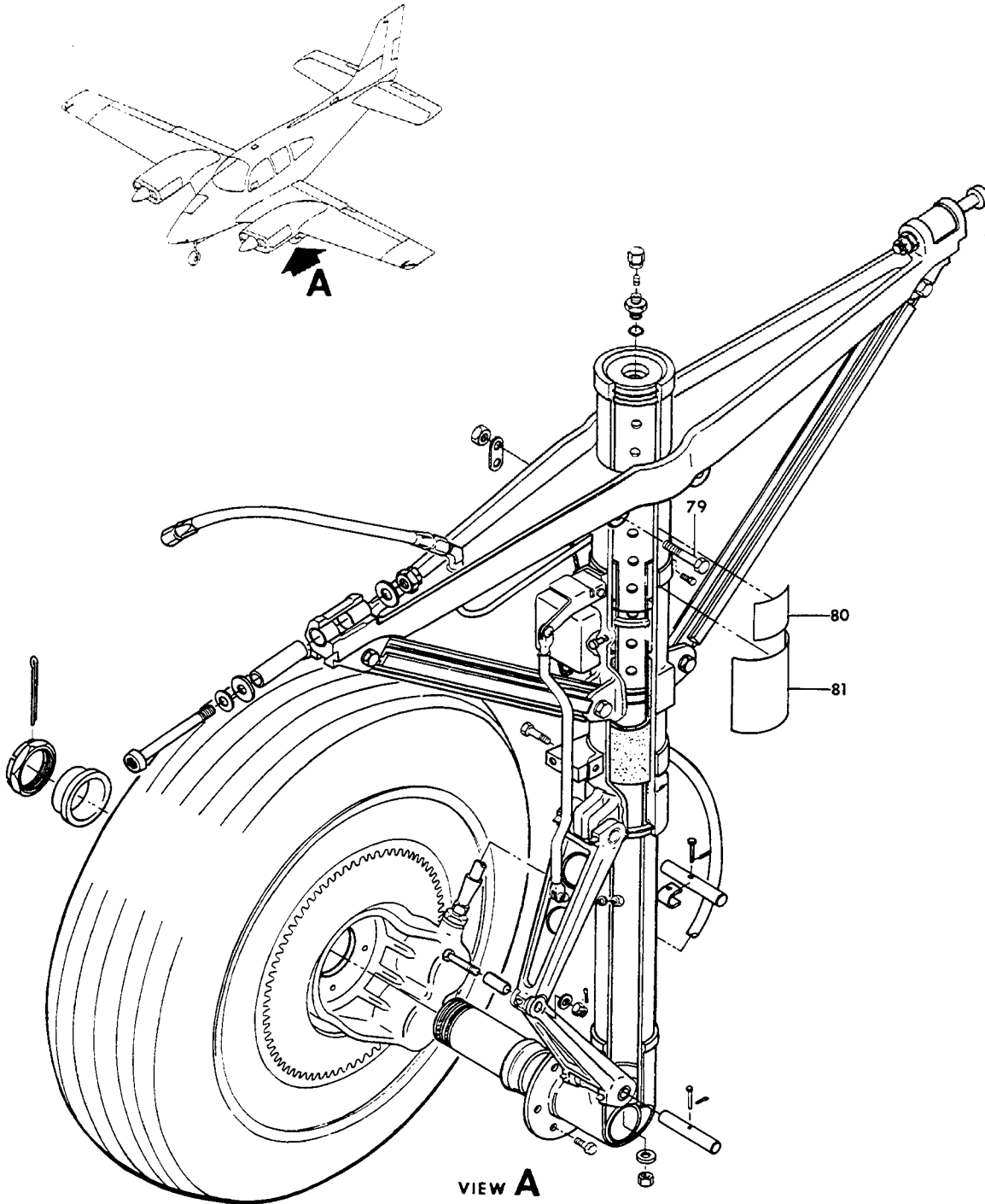


55-202-17

B E E C H C R A F T
 CARON SERIALS TC-1 THRU TC-1607, TE-1 THRU TE-937, TE-939 THRU TE-942
 I L L U S T R A T E D P A R T S C A T A L O G

ATA CODE & INDEX NO.	PART NO.	DESCRIPTION	UNITS PER ASSY	USABLE ON CODE
		1 2 3 4 5 6 7		
10-20 - 59	35-361145	. LINK ASSY, LANDING GEAR SAFETY SWITCH.	1	10
		/ATTACHING PARTS/		
- 60	AN393-13	. PIN	2	
	AN960D10	. WASHER	4	
	MS24665-130	. PIN, COTTER/SUPERSEDES AN380-2-1/.	2	
		↓		
- 61	AN42-4	. BOLT, EYE	1	10
		/ATTACHING PARTS/		
- 62	AN960-10L	. WASHER	2	
- 63	AN310-3	. NUT	1	
	MS24665-132	. PIN, COTTER/SUPERSEDES AN380-2-2/.	1	
		↓		
- 64	AN161-16RS	. FORK	1	10
- 65	AN919-6D	. REDUCER	1	10
	MS28778-6	. PACKING	1	10
	95-361015-601	. SWITCH ASSY, LANDING GEAR SAFETY	1	10
		/ATTACHING PARTS/		
	AN3-12A/M/	. BOLT	1	
	AN960D10	. WASHER	1	
	MS20365-1032	. NUT	1	
		↓		
- 66	35-361135-1 BOX, LANDING GEAR SAFETY SWITCH.	1	10
- 67	AN526-632-22 SCREW	2	10
	AN960A6 WASHER/SUPERSEDES AN960D6	2	10
	AN742-6C CLAMP	1	10
	MS20365-632 NUT/SUPERSEDES AN365-632/	2	10
- 68	MC2711 ACTUATOR	1	10
- 69	MS25026-1 SWITCH	1	10
- 70	45-364238 INSULATOR	2	10
- 71	35-361136 GASKET	1	10
- 72	35-361134 COVER	1	10
	AN960A816L WASHER	2	10
- 73	35-361150 SPRING	1	10
- 74	100951DD032YF WASHER	1	10
- 75	NAS51-31 RING, SNAP	1	10
- 76	35-361153 WASHER	1	10
- 77	35-361132-1 ARM, SAFETY SWITCH	1	10
- 78	AN393-29 PIN	1	10
	AN960-10 WASHER	1	10
	MS24665-130 PIN, COTTER/SUPERSEDES AN380-2-1/.	1	10

BEECHCRAFT
BARON SERIALS TC-1 THRU TC-1607, TE-1 THRU TE-937, TE-939 THRU TE-942
ILLUSTRATED PARTS CATALOG



55-202-18

B E E C H C R A F T
 BARON SERIALS TC-1 THRU TC-1607, TE-1 THRU TE-937, TE-939 THRU TE-942
 I L L U S T R A T E D P A R T S C A T A L O G

ATA CODE & INDEX NO.	PART NO.	DESCRIPTION							UNITS PER ASSY	USABLE ON CODE
		1	2	3	4	5	6	7		
10-20 - 79	35-361133	. .	BRACKET ASSY.	1	10	
	106242-3-03600	. .	TUBING, INSULATING	1	10	
	106242-3-00104	. .	TUBING, INSULATING	2	10	
	106242-1A-00100	. .	TUBING, INSULATING	2	10	
	MS35489-5	. .	GROMMET/SUPERSEDES AN931-3-10/	1	10	
	35-361148-1	. .	BOOT.	1	10	
- 80	112406		PLACARD, LANDING GEAR PATENT	1	10	
- 81	96-810012		PLATE, MAIN SHOCK STRUT LH INSTRUCTION	1	1	
	96-810020		PLATE, MAIN SHOCK STRUT LH INSTRUCTION	1	7	
	35-810171		PLATE, MAIN SHOCK STRUT LH INSTRUCTION	1	24	
	36-810011		PLATE, MAIN SHOCK STRUT LH INSTRUCTION	1	25	
	96-810018		PLATE, MAIN SHOCK STRUT LH INSTRUCTION	1	26	
	58-810012		PLATE, MAIN SHOCK STRUT LH INSTRUCTION	1	27	
	96-810013		PLATE, MAIN SHOCK STRUT RH INSTRUCTION	1	1	
	96-810021		PLATE, MAIN SHOCK STRUT RH INSTRUCTION	1	7	
	35-810170		PLATE, MAIN SHOCK STRUT RH INSTRUCTION	1	24	
	36-810012		PLATE, MAIN SHOCK STRUT RH INSTRUCTION	1	25	
	96-810019		PLATE, MAIN SHOCK STRUT RH INSTRUCTION	1	26	
	58-810013		PLATE, MAIN SHOCK STRUT RH INSTRUCTION	1	27	

CODES OF EFFECTIVITY

- | | |
|--|--|
| 1 TC-251, TC-344 AND
TC-355 THRU TC-422
3 TC-850 THRU TC-1010
5 TC-1289 THRU TC-1607
TE-1 THRU TE-167
7 TC-423 THRU TC-1010
9 TC-423 THRU TC-1607
TE-1 THRU TE-167
11 TC-251, TC-344 AND
TC-355 THRU TC-1402
TE-1 THRU TE-850
13 TC-251, TC-344 AND
TC-355 THRU TC-1030
TE-1 THRU TE-355
15 TC-1031 THRU TC-1607
TE-356 THRU TE-942
EXCEPT TE-938
17 TE-1 THRU TE-942
EXCEPT TE-938
19 TC-1307 THRU TC-1380
TC-1390 THRU TC-1607
TE-1 THRU TE-942
EXCEPT TE-938
21 TC-1289 THRU TC-1607
TE-1 THRU TE-942
EXCEPT TE-938
23 TC-251, TC-344 AND
TC-355 THRU TC-1288
25 TC-1307 THRU TC-1380
TC-1390 THRU TC-1607
27 TE-778 THRU TE-833
TE-841 THRU TE-942
EXCEPT TE-938 | 2 TC-423 THRU TC-849
4 TC-1011 THRU TC-1607
TE-1 THRU TE-167
6 TE-168 THRU TE-942
EXCEPT TE-938
8 TC-1011 THRU TC-1607
10 TC-251, TC-344 AND
TC-355 THRU TC-1607
TE-1 THRU TE-942
EXCEPT TE-938
12 TC-1403 THRU TC-1607
TE-851 THRU TE-942
EXCEPT TE-938
14 TC-1031 THRU TC-1533
TE-356 THRU TE-907
16 TC-251, TC-344 AND
TC-355 THRU TC-1607
18 TC-251, TC-344 AND
TC-355 THRU TC-1306
TC-1381 THRU TC-1389
20 TC-423 THRU TC-1288
22 TC-423 THRU TC-1607
TE-1 THRU TE-942
EXCEPT TE-938
24 TC-1011 THRU TC-1306
TC-1381 THRU TC-1389
26 TE-1 THRU TE-777
TE-834 THRU TE-840 |
|--|--|

END