

**IMPORTANT DOCUMENTS**  
KEEP WITH AIRCRAFT RECORDS

**B.A.S., INC INSTALLLATION INSTRUCTIONS**

**INERTIA REEL SHOULDER HARNESS  
BEECHCRAFT**

Read all instructions carefully before proceeding with installation. If you experience problems, or if the instructions are not clear to you, please phone B.A.S., Inc. @ 888-255-6566 before proceeding. If we are not available when you call let the phone ring- --our answering machine will take the message and we will contact you promptly. **Refer to Note Page for specific model instructions.**

All work to be done in accordance with procedures in Beechcraft maintenance manual for this aircraft.

1. Remove headliner panels and enough insulation to gain access to installation location. It may be necessary on **early models** with one-piece headliners to remove the two headliner support brackets. They will be re-installed later. **Refer to Photo No. 1, Page 4.**
2. The reels will be located behind the pilot and co-pilots head approximately 5 inches aft of rear doorpost. This should be approximately 20 inches forward of rear canopy ring ( refer to step 7) In this area check for obstructions between outer structural frame and inboard roof stiffener angles on both sides of aircraft. **Refer to Photo No. 2 , Page 4.**
3. Temporarily install PN 1-Be (**red left & green right**) by hooking the small inner flange under the rolled edge of the inboard angle as per drawing and photo's. Check for fit. Limit flange pull-up to .005 by using a shim, if needed, between PN 1-Be and the inboard stringer. **NOTE:** Max. shim thickness is .032.2024-T3. If PN 1-Be does not fit STOP and call B.A.S., Inc. **Refer to Photo No. 3 & 4, Page 4.**
4. Slip reel assemblies onto PN 1-Be to make sure everything is going to fit. **NOTE: Allow room for your rivet puller to operate. Refer to Photo No. 5 & 6, Page 4.**
5. If all looks OK, mark frame and angle and remove reel assemblies, align PN 1-Be with marks and drill rivet holes and cleco clamp using PN 1-Be as a template. **NOTE: You will need an angle drill for inboard holes. Refer to Photo No. 3 & 4, Page 4 and Tool Photo Page.**
6. Remove PN 1-Be and clean out drill shavings, then re-install and cherry rivet into place with Cherry Max (CR3213-4-02 or NAS9301B-4-02) blind rivets. **Refer to Photo No. 3 & 5, Page 4.**
7. On rear of canopy ring approximately 20 inches aft of PN 1-Be and from 5 to 5 ½ inches, depending on rivet spacing, outboard of inboard angle. Locate space between 2 rivets and clean off insulation glue or undercoating. **NOTE: Do not scratch metal. Use solvent. Refer to Photo No. 2, Page 4 & Photo No. 7, Page 5.**
8. Temporarily attach strap to inboard hole of PN 1-Be and center between the 2 rivets mentioned in Step 7. Trim the length to fit. See edge margin in step 10. If strap is too short to reach canopy frame, stop. Do not drill. Contact B.A.S., Inc. **NOTE: It is better to make numerous small trimming cuts than 1 cut too short. Refer to Photo No. 2, Page 4.**

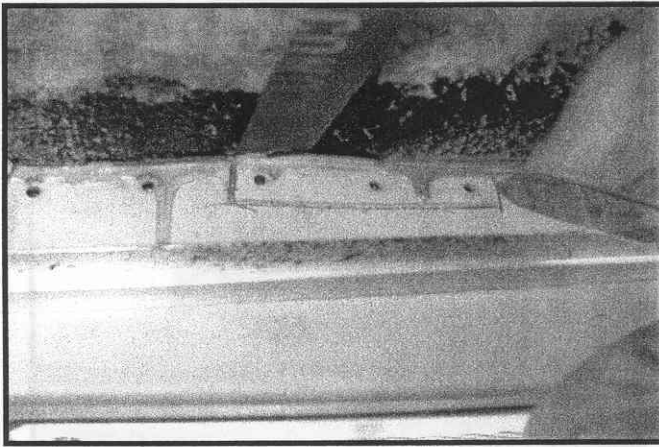
Beechcraft	<b>Installation Instructions</b>	Report 1103
		Page 1 of 6
REV B April 14, 2003	BAS Incorporated	Sheet 1



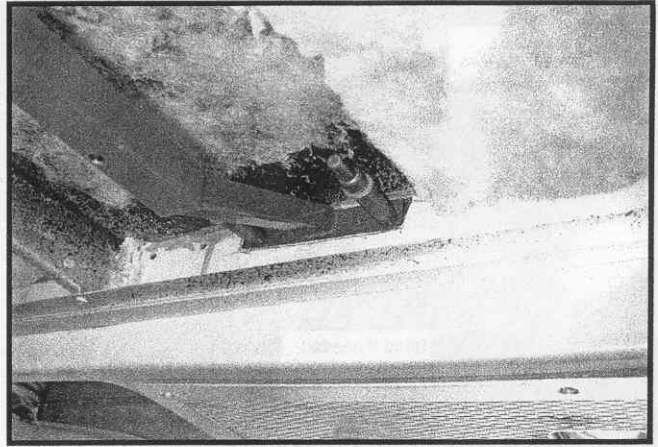




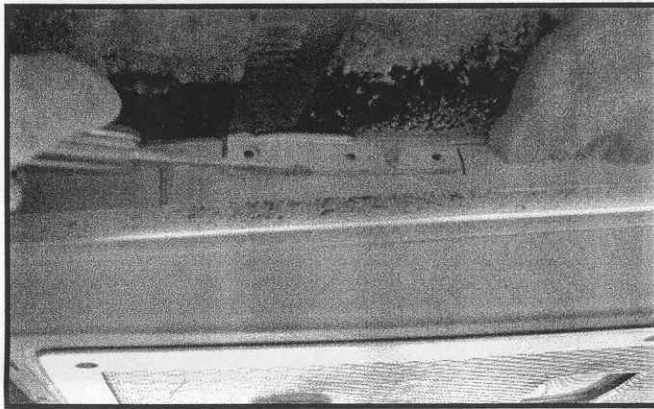




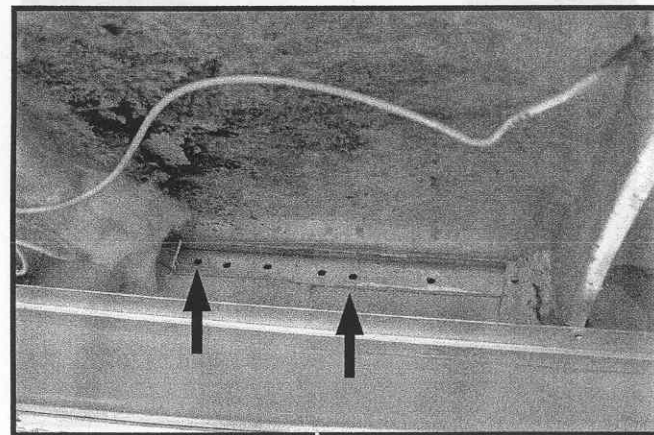
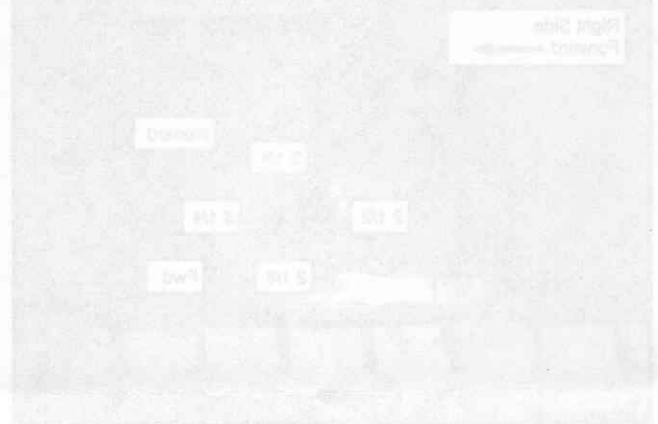
Remove screws that attach plastic air duct where PN 1-Be will be mounted. Carefully pry plastic from angle and cut as shown.



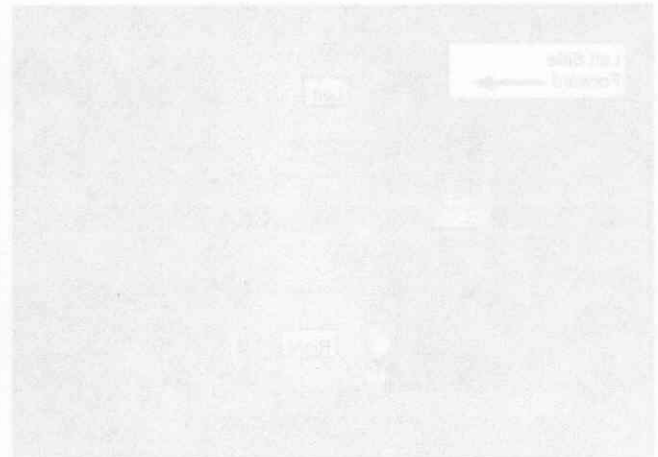
Right Inboard



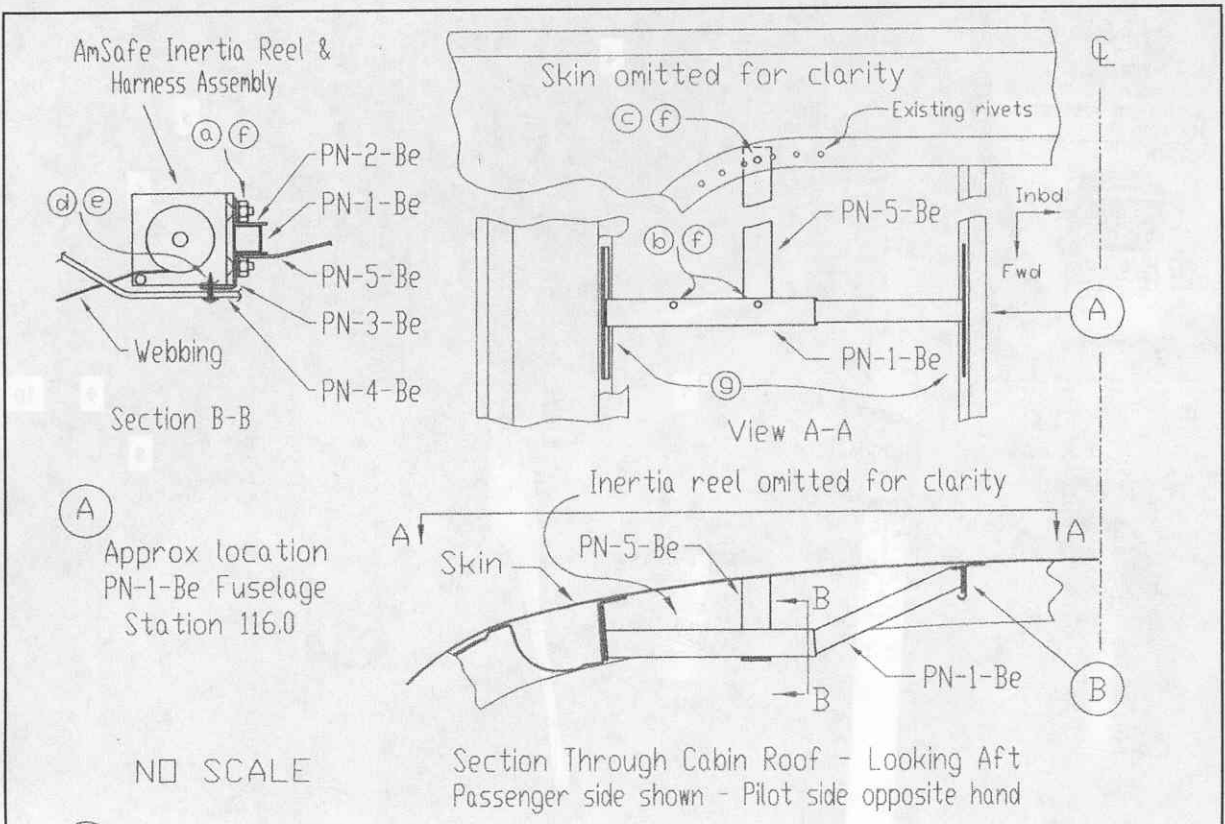
NOTE: Be careful. Don't scratch underlying structure.



NOTE: Two of the holes in PN 1-Be might line up with screw holes in Stiffener. If not, space holes for the best edge margin.



Beechcraft	<h1>Photographs</h1>	Report 1103
V 35 Photo Sheet		Page 6 of 6
REV B April 14, 2003		BAS Incorporated



(A) Approx location  
PN-1-Be Fuselage  
Station 116.0

NO SCALE

(B) Shim of up to 0.032 max thickness may be used. Contact BAS if greater shim thickness is required.

HARDWARE - Per Side

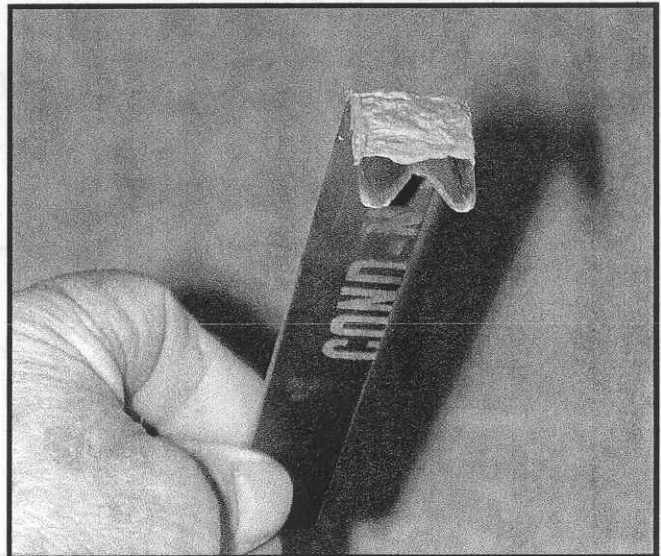
- (a) 4 ea MS24694-S48 flat-head reel mounting screw
- (b) 2 ea AN3-11A bolt
- (c) 1 ea AN525-10R7 structural screw
- (d) 2 ea A1784-6Z1 Tinnerman nut
- (e) 2 ea S4R-6 3/8 sheet metal screw
- (f) 7 ea NAS679A3 nut
- (g) 10 ea CR3213-4-02 cherry rivet
- (h) 2 ea AN960-10 Washers

Rev. Control | REV. A May 1, 2003 | Added Item H to Hardware List & Shim Info (B)

Figure No 1-Beechcraft	<b>Installation</b>	
REV A May 1, 2003	BAS Incorporated	



1. #50 Drill Bit
2. #30 Drill Bit
3. #10 Drill Bit
4. Paraffin Wax
5. One 3/16 Inch Cleco Clamps
6. Four 1/8 Inch Cleco Clamps
7. Door Ease Grease
8. 3/8 Inch Wrench
9. 3/8 Inch Socket
10. Special Beech Headliner Tool



**Special Beech Headliner Tool** made of .050 4130 as shown. I heat treated mine by heating cherry red and quenching in cleaning solvent. **CAUTION:** Don't burn your shop down. Add a little silicone, as shown to protect the paint while prying.