

MICRO SWITCH

A DIVISION OF HONEYWELL-INTERNATIONAL COMPANY
 FEDERAL MANUFACTURING CODE 91929

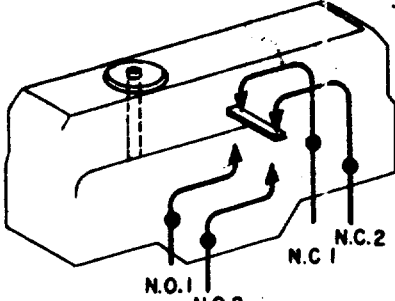
SWITCH-BASIC

CATALOG LISTING

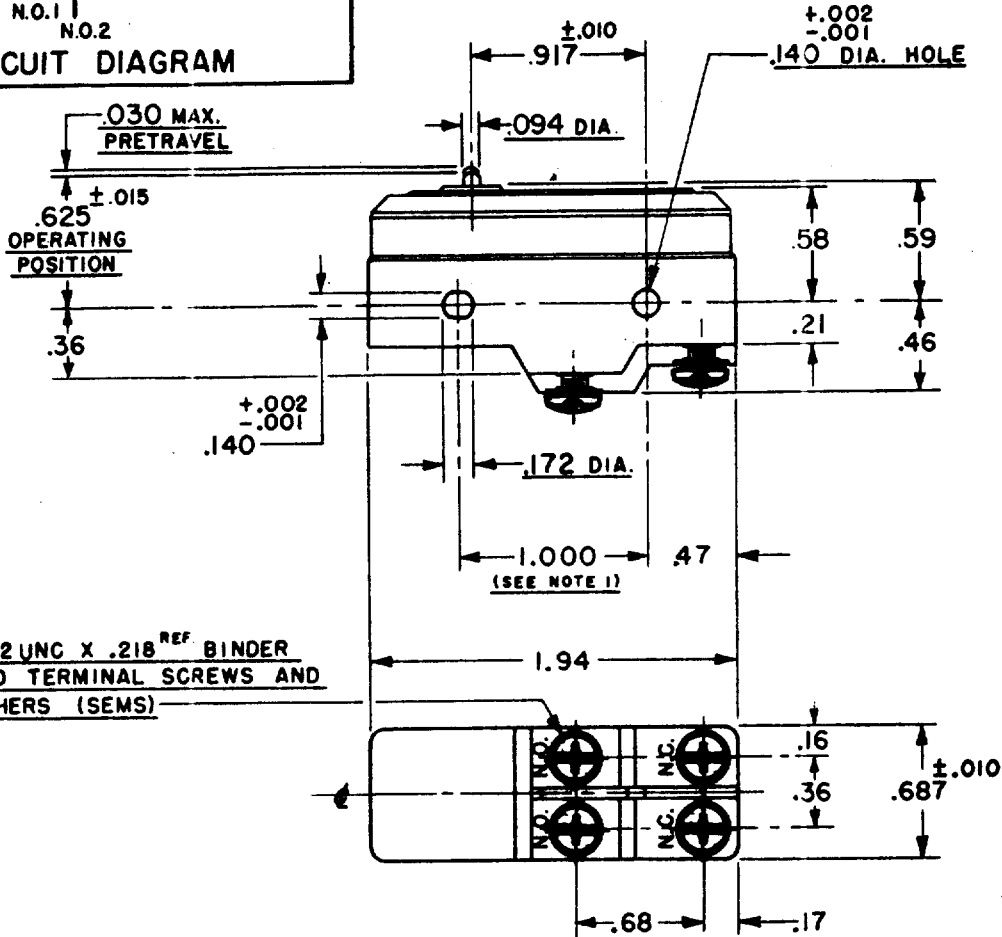
BZ-3AT

BZ-3AT

(M) BZ-3AT
 ISSUE 2



CIRCUIT DIAGRAM



6-32 UNC X .218^{REF} BINDER
 HEAD TERMINAL SCREWS AND
 WASHERS (SEMS)

- NOTE -**
- 1- MOUNTING HOLES WILL ACCEPT PINS OR SCREWS OF .139 MAX. DIA. ON 1.000 ±.002 CENTERS.
 - 2- SUITABLE ONLY FOR APPLICATIONS IMPARTING A RAPID STROKE TO THE SWITCH PLUNGER.

THIS DRAWING COVERS A PROPRIETARY ITEM AND IS THE PROPERTY OF MICRO SWITCH, A DIVISION OF HONEYWELL. THIS DRAWING IS NOT TO BE COPIED OR USED WITHOUT THE APPROVAL OF MICRO SWITCH.

CHARACTERISTICS

OPERATING FORCE-----16-26 OZ.
 RELEASE FORCE-----4 OZ. MIN.
 DIFFERENTIAL TRAVEL-----.002-.005
 OVERTRAVEL-----.005 MIN.

ELECTRICAL DATA

CONTACT ARRANGEMENT
 (SEE CIRCUIT DIAGRAM)

UNDERWRITERS' LAB. INC. LISTED RATING.
 15 A-125, 250, OR 400 VAC
 -L73- 1 A-125 VDC; 0.5 A-250 VDC
 1/4 HP-125 VAC; 1/2 HP-250 VAC

SCALE----- FULL

DO NOT SCALE PRINT

UNLESS OTHERWISE SPECIFIED
 DIMENSIONS ARE IN INCHES
TOLERANCES ARE:

ONE PLACE	(.0)	±.030
TWO PLACE	(.00)	±.015
THREE PLACE	(.000)	±.005
ANGLES		±

WEIGHT

M
 DRAWING NUMBER
 38
 ISSUE
 38

REVISIONS

A	C.O. 9600	15 DEC 58
B	C.A. 12094	19 SEPT 57
C	C.O. 12095	19 FEB 58
D	C.O. 15689	3 MAR 61
E	C.S. 29424	26 JAN 71
F	C.S. 68351-D	18 JUL 91

74-88
 D.A.W. 15, DEC. 55
 G.C.M. 21 DEC. 55
 C.A.T. 16 DEC. 55